

NUM PAGES 2
 DCC TAX PD CHG RET
 FEES 13.00 PD CHG RET
 TOTAL 13.00
 REC'D Baker & Assoc.
 RET

NUM INDEX A & J
 COMPUTER L
 PICTURED M
 IMAGED

FINAL PLAT OF MAAG SUBDIVISION
 A SUBDIVISION OF PART OF THE SOUTHWEST QUARTER OF SECTION 26, TOWNSHIP 23 NORTH, RANGE 55 WEST, OF THE 6TH PRINCIPLE MERIDIAN.

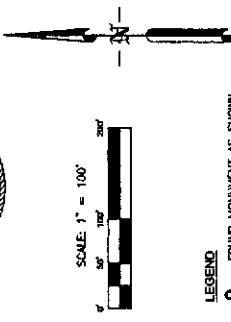
LEGAL DESCRIPTION
 A SUBDIVISION OF PART OF THE SOUTHWEST QUARTER OF SECTION 26, TOWNSHIP 23 NORTH, RANGE 55 WEST, OF THE 6TH PRINCIPLE MERIDIAN, SCOTTS BLUFF COUNTY, NEBRASKA, MORE PARTICULARLY DESCRIBED AS FOLLOWS:
 BEGINNING AT THE SOUTHWEST CORNER OF SECTION 26; THENCE NORTHERLY ON THE WEST LINE OF SECTION 26 ON AN ASSUMED BEARING OF N00°00'00"E, 786.71 FEET; THENCE, S89°38'29"E, 843.32 FEET TO THE POINT OF BEGINNING.

THENCE, N04°23'52"E, 501.92 FEET; THENCE, N00°50'16"W, 92.50 FEET; THENCE, S39°16'33"E, 151.62 FEET; THENCE, S41°07'31"E, 125.48 FEET; THENCE, S47°06'24"E, 163.57 FEET; THENCE, S51°05'10"E, 250.09 FEET; THENCE, S64°24'47"E, 761.72 FEET; THENCE, S89°38'29"E, 843.32 FEET TO A POINT OF INTERSECTION WITH THE CENTERLINE OF PATHFINDER BRIGGATION LATERAL B-24; THENCE, ALONG SAID CENTERLINE, S40°47'10"E, 20.44 FEET; THENCE, S59°50'41"E, 116.70 FEET; THENCE, S59°41'12"E, 75.08 FEET; THENCE, S39°26'14"E, 162.18 FEET; THENCE, S41°40'41"E, 171.76 FEET; THENCE, S39°24'03"E, 45.48 FEET; THENCE, S07°19'33"E, 306.55 FEET; THENCE, S21°17'11"E, 121.71 FEET; THENCE, N11°27'19"W, 22.49 FEET; THENCE, N44°05'47"E, 65.40 FEET; THENCE, N66°45'08"W, 38.60 FEET; THENCE, S33°21'00"W, 78.47 FEET; THENCE, S48°53'33"W, 18.68 FEET; THENCE, N41°04'25"W, 286.24 FEET; THENCE, N14°01'57"E, 281.11 FEET; THENCE, N41°03'52"W, 334.53 FEET TO THE POINT OF BEGINNING, CONTAINING 26.734 ACRES MORE OR LESS.

SURVEYOR'S STATEMENT
 I, JOHN D. KRISCHEL, A LICENSED LAND SURVEYOR IN THE STATE OF NEBRASKA, DO HEREBY STATE THAT THIS PLAT OF MAAG SUBDIVISION WAS PREPARED UNDER MY RESPONSIBLE CHARGE AND BASED UPON MY KNOWLEDGE AND BELIEF IN ACCORDANCE WITH THE NEBRASKA SURVEYING STATUTES AND IS NOT A GUARANTEE OR WARRANTY, EITHER EXPRESSED OR IMPLIED, OF THE ACCURACY OF THE INFORMATION HEREON. I HAVE MY HAND AND SEAL THIS 2nd day of July, 2007.



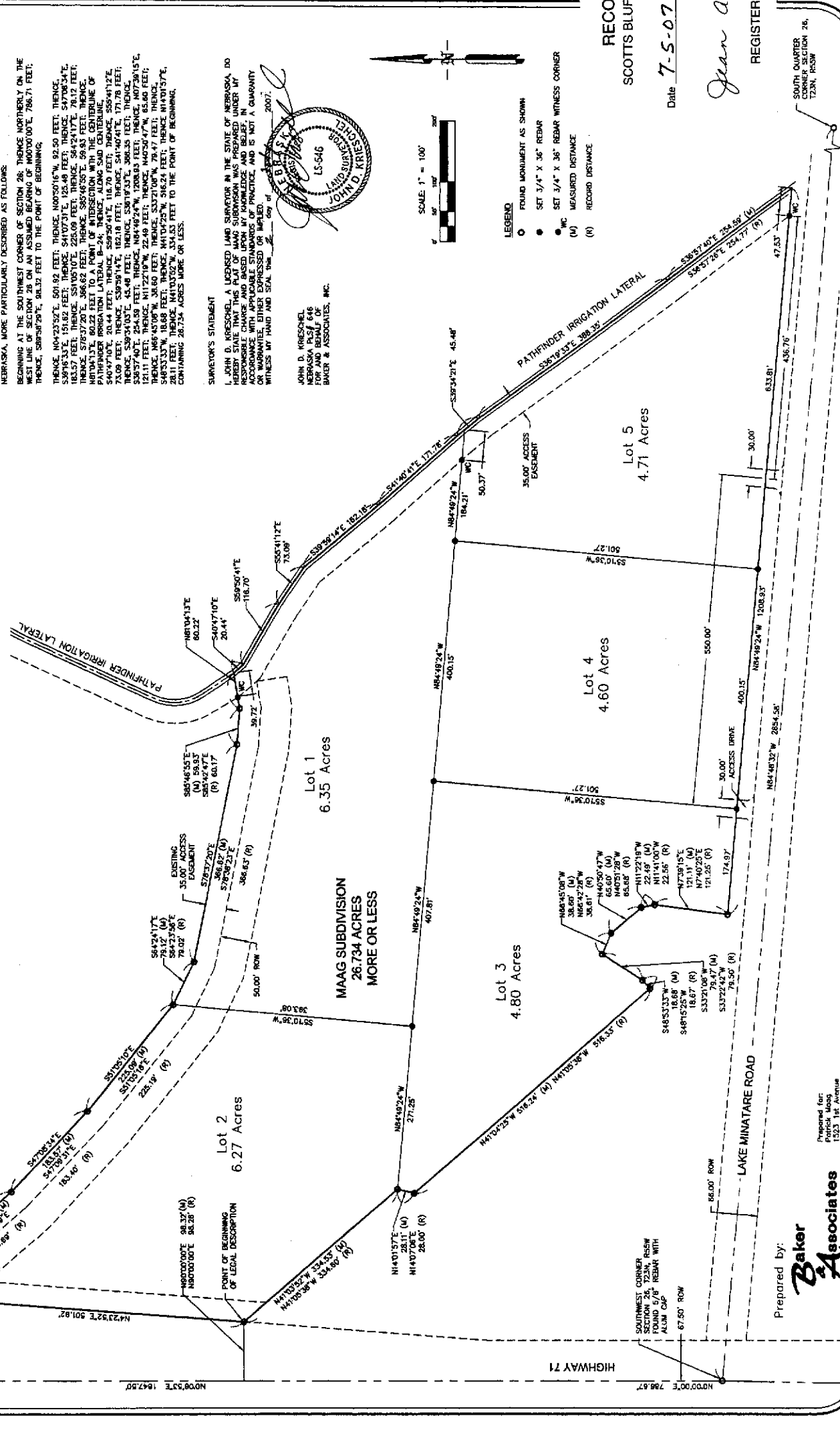
JOHN D. KRISCHEL
 NEBRASKA PLS# 646
 FOR AND BEHALF OF
 BAKER & ASSOCIATES, INC.



- LEGEND
- FOUND MONUMENT AS SHOWN
 - SET 3/4" X 36" REBAR
 - SET 3/4" X 36" REBAR WITNESS CORNER
 - MC MEASURED DISTANCE
 - (M) RECORD DISTANCE
 - (R) RECORD DISTANCE

RECORDED
 SCOTTS BLUFF COUNTY, NE
 Date 7-5-07 Time 11:25 AM

Jean A. Bauer
 REGISTER OF DEEDS



Prepared by:
Baker Associates Inc.
 Patrick Maas
 1523 1st Avenue
 Scottsbluff, Nebraska 68361

SOUTH QUARTER CORNER SECTION 26, T23N, R55W

FINAL PLAT
OF
MAAG SUBDIVISION
A SUBDIVISION OF PART OF THE SOUTHWEST
QUARTER OF SECTION 26, TOWNSHIP 23 NORTH,
RANGE 55 WEST, OF THE 6TH PRINCIPLE MERIDIAN.

OWNER'S STATEMENT:
We, the undersigned, being the owners of the real estate described in the foregoing "Land Description" and shown on the accompanying plat, have caused each real estate to be platted as MAAG SUBDIVISION, A SUBDIVISION OF PART OF THE SOUTHWEST QUARTER SECTION 26, TOWNSHIP 23 NORTH, RANGE 55 WEST OF THE 6TH PRINCIPLE MERIDIAN, SCOTTSBUFF COUNTY, NEBRASKA. The foregoing Plat is made with my free consent and in accordance with the desires of the undersigned Owners.

By: [Signature] Date: 2/16/2008

ACKNOWLEDGEMENT:
STATE OF NEBRASKA }
COUNTY OF SCOTT'S BLUFF } ss.
Before me, a Notary Public, qualified and acting in said County, personally came Patrick Maag known to me to be the person whose name is signed the foregoing Owner's Statement, and contemporaneously the submission thereto to be this 16th day of February, 2008.

WITNESS MY HAND AND NOTARIAL SEAL this 16th day of February, 2008.



My Commission Expires: 2/16/2008

APPROVAL AND ACCEPTANCE
The foregoing plat of MAAG SUBDIVISION, A SUBDIVISION OF PART OF THE SOUTHWEST QUARTER SECTION 26, TOWNSHIP 23 NORTH, RANGE 55 WEST OF THE 6TH PRINCIPLE MERIDIAN, SCOTT'S BLUFF COUNTY, NEBRASKA, is hereby approved by the Scotts Bluff County Board of Commissioners, by resolution passed this 16th day of February, 2008.

[Signature]
Chairman of the Board
Attest: [Signature]
County Clerk

