

RECORDED
 SCOTT'S BLUFF COUNTY, NE
 Date 12-5-06 Time 10:25am
 Inst. 2006-7528
 Jean A. Bauer

RECORDED
 SCOTT'S BLUFF COUNTY, NE
 Date 12-5-06 Time 10:25am
 Inst. 2006-7528
 Jean A. Bauer

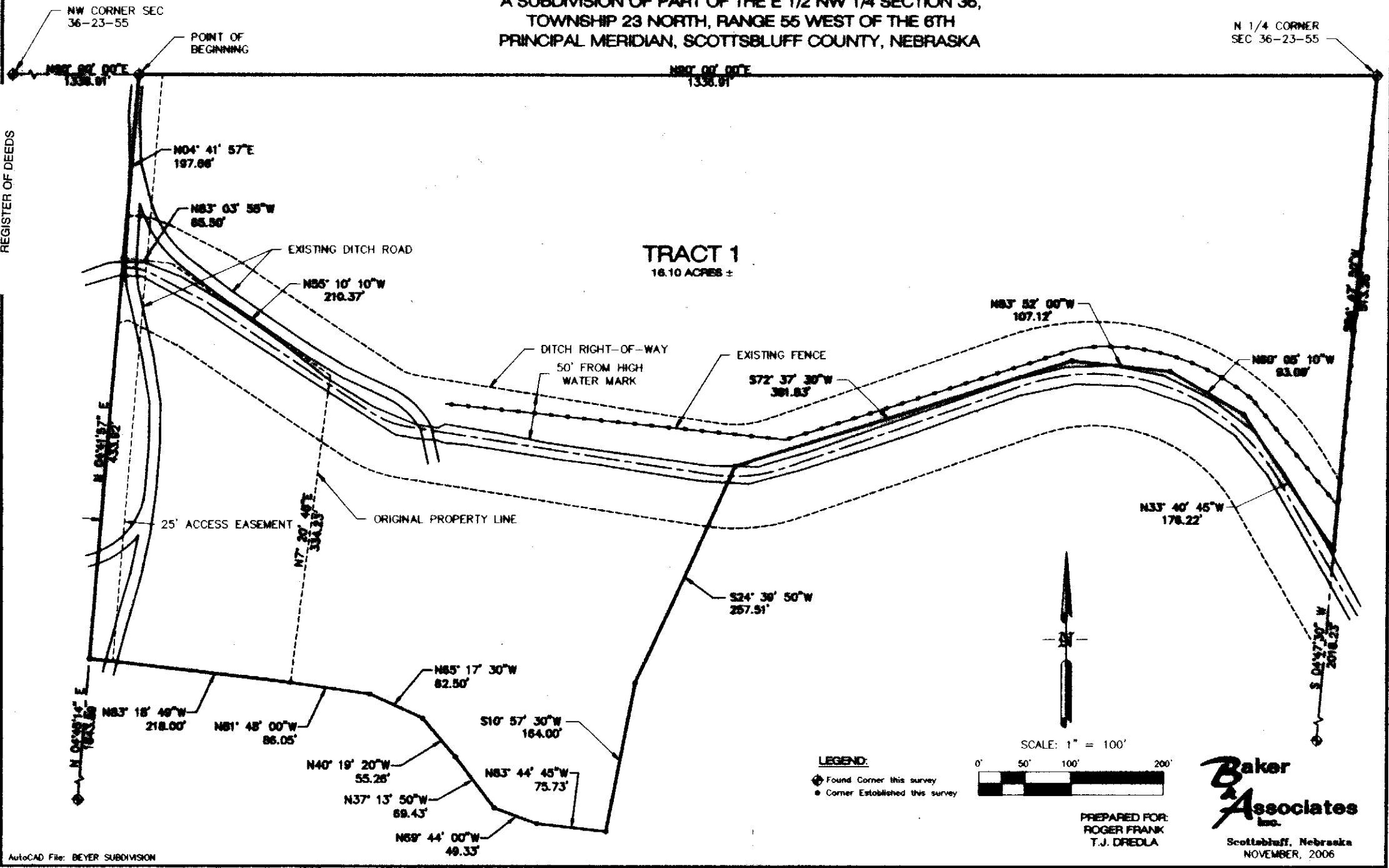
2006-7528
 AutoCAD File: BEYER SUBDIVISION

SHEET 1 OF 2

**RE-PLAT OF
 BEYER SUBDIVISION**

A SUBDIVISION OF PART OF THE E 1/2 NW 1/4 SECTION 36,
 TOWNSHIP 23 NORTH, RANGE 55 WEST OF THE 6TH
 PRINCIPAL MERIDIAN, SCOTT'SBLUFF COUNTY, NEBRASKA

N 1/4 CORNER SEC 36-23-55

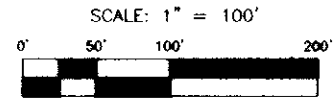


REGISTER OF DEEDS

TRACT 1
 16.10 ACRES ±

LEGEND:

- Found Corner this survey
- Corner Established this survey



PREPARED FOR:
 ROGER FRANK
 T.J. DREDLA

**Baker
 & Associates**
 Inc.

Scottsbluff, Nebraska
 NOVEMBER, 2006

met. 2006 - 7528

SURVEYORS CERTIFICATE:

I, ROBERT J. ZUMBAHLEN, NEBRASKA REGISTERED LAND SURVEYOR NUMBER 331, DO HEREBY CERTIFY THAT I HAVE SURVEYED AND PREPARED A RE-PLAT OF BEYER SUBDIVISION, A SUBDIVISION OF PART OF THE E 1/2 NW 1/4 SECTION 36, TOWNSHIP 23 NORTH, RANGE 55 WEST OF THE 6TH PRINCIPAL MERIDIAN, SCOTTSBLUFF COUNTY, NEBRASKA MORE PARTICULARLY DESCRIBED AS FOLLOWS:

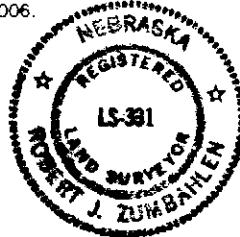
BEGINNING AT THE NORTHWEST CORNER OF SECTION 36; THENCE, N 90°00'00" E ALONG THE NORTH LINE OF SECTION 36 FOR A DISTANCE OF 1336.91 FEET, TO THE TRUE POINT OF BEGINNING; THENCE, CONTINUING ON THE NORTH LINE OF SECTION 36 N 90°00'00" E FOR A DISTANCE OF 1336.91 FEET TO THE NORTH 1/4 CORNER OF SECTION 36; THENCE, S 04°47'50" W ALONG THE NORTH-SOUTH CENTERLINE OF SECTION 36 FOR A DISTANCE OF 513.25 FEET; THENCE, N 33°40'45" FOR A DISTANCE OF 176.22 FEET; THENCE, N 60°05'10" W FOR A DISTANCE OF 93.09 FEET; THENCE N 83°52'00" W FOR A DISTANCE OF 107.12 FEET; THENCE, S 72°37'30" W FOR A DISTANCE OF 381.83 FEET; THENCE, S 24°39'50" W FOR A DISTANCE OF 257.51 FEET; THENCE, S 10°57'30" W FOR A DISTANCE OF 164.00 FEET; THENCE, N 83°44'45" W FOR A DISTANCE OF 75.73 FEET; THENCE, N 69°44'00" W FOR A DISTANCE OF 49.33 FEET; THENCE, N 37°13'50" W FOR A DISTANCE OF 69.43 FEET, THENCE, N 40°19'20" W FOR A DISTANCE OF 55.26 FEET; THENCE, N 65°17'30" W FOR A DISTANCE OF 62.50 FEET; THENCE, N 81°48'00" W FOR A DISTANCE OF 86.05 FEET; THENCE N 83°18'49" W FOR A DISTANCE OF 218.00 FEET; THENCE N 04°41'57" E FOR A DISTANCE OF 433.92 FEET; THENCE, N 04°41'57" E FOR A DISTANCE OF 197.66 FEET TO A POINT ON THE NORTH LINE OF SECTION 36, SAID POINT ALSO BEING THE TRUE POINT OF BEGINNING, CONTAINING AN AREA OF 16.10 ACRES MORE OR LESS.

THAT THE ACCOMPANYING DRAWING IS A TRUE AND CORRECT DELINEATION OF SAID SURVEY DRAWN TO A SCALE OF 100 FEET TO THE INCH; THAT ALL DIMENSIONS GIVEN ARE IN FEET AND DECIMALS OF A FOOT; AND THAT THE MONUMENTS WERE FOUND OR SET AS INDICATED.

WITNESS MY HAND AND SEAL this 17th day of November, 2006.

ROBERT J. ZUMBAHLEN
Nebraska Registered Land Surveyor Number 331

Robert J. Zumbahlen



OWNER'S STATEMENT:

We, the undersigned, being the owners of the real estate described in the foregoing "Legal Description" and shown on the accompanying plat, have caused such real estate to be platted as:

RE-PLAT OF BEYER SUBDIVISION, A SUBDIVISION OF PART OF THE E 1/2 NW 1/4 SECTION 36, TOWNSHIP 23 NORTH, RANGE 55 WEST OF THE 6TH PRINCIPAL MERIDIAN, SCOTTSBLUFF COUNTY, NEBRASKA.

The foregoing Plat is made with my free consent and in accordance with the desires of the undersigned Owners.

By: *Thomas Dredla IV* Date: 11-17-2006
Thomas Dredla IV

ACKNOWLEDGEMENT:

STATE OF NEBRASKA }
COUNTY OF SCOTTS BLUFF } ss.

Before me, a Notary Public, qualified and acting in said County, Thomas Dredla IV, known to me to be the identical person who signed the foregoing "Owner's Statement" and acknowledged the execution thereof to be their voluntary act and deed.

WITNESS MY HAND AND NOTARIAL SEAL this 17th day of November, 2006.

Lita Delcamp
My Commission Expires: 2-16-08



**RE-PLAT OF
BEYER SUBDIVISION**

A SUBDIVISION OF PART OF THE E 1/2 NW 1/4 SECTION 36,
TOWNSHIP 23 NORTH, RANGE 55 WEST OF THE 6TH
PRINCIPAL MERIDIAN, SCOTTSBLUFF COUNTY, NEBRASKA

OWNER'S STATEMENT:

We, the undersigned, being the owners of the real estate described in the foregoing "Legal Description" and shown on the accompanying plat, have caused such real estate to be platted as:

RE-PLAT OF BEYER SUBDIVISION, A SUBDIVISION OF PART OF THE E 1/2 NW 1/4 SECTION 36, TOWNSHIP 23 NORTH, RANGE 55 WEST OF THE 6TH PRINCIPAL MERIDIAN, SCOTTSBLUFF COUNTY, NEBRASKA.

The foregoing Plat is made with my free consent and in accordance with the desires of the undersigned Owners.

By: *Roger Frank* Date: 11/30/06
Roger Frank

ACKNOWLEDGEMENT:

STATE OF NEBRASKA }
COUNTY OF SCOTTS BLUFF } ss.

Before me, a Notary Public, qualified and acting in said County, personally came Roger Frank known to me to be the identical person who signed the foregoing "Owner's Statement" and acknowledged the execution thereof to be their voluntary act and deed.

WITNESS MY HAND AND NOTARIAL SEAL this 20th day of November, 2006.

Lita Delcamp
My Commission Expires: 2-16-08

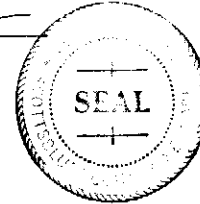


APPROVAL AND ACCEPTANCE

The foregoing plat of RE-PLAT OF BEYER SUBDIVISION, A SUBDIVISION OF PART OF THE E 1/2 NW 1/4 SECTION 36, TOWNSHIP 23 NORTH, RANGE 55 WEST OF THE 6TH PRINCIPAL MERIDIAN, SCOTTS BLUFF COUNTY, NEBRASKA, is hereby approved by the Scotts Bluff County Board of Commissioners, by resolution passed this 4 day of December, 2006.

Doug Taylor
Chairman of the Board

ATTEST: *Ula Ahlberg*
County Clerk



**Baker
Associates
Inc.**

Scottsbluff, Nebraska
NOVEMBER, 2006