



2006-6697

Inst. 2006 - 6697

RECORDED
SCOTTS BLUFF COUNTY, NE

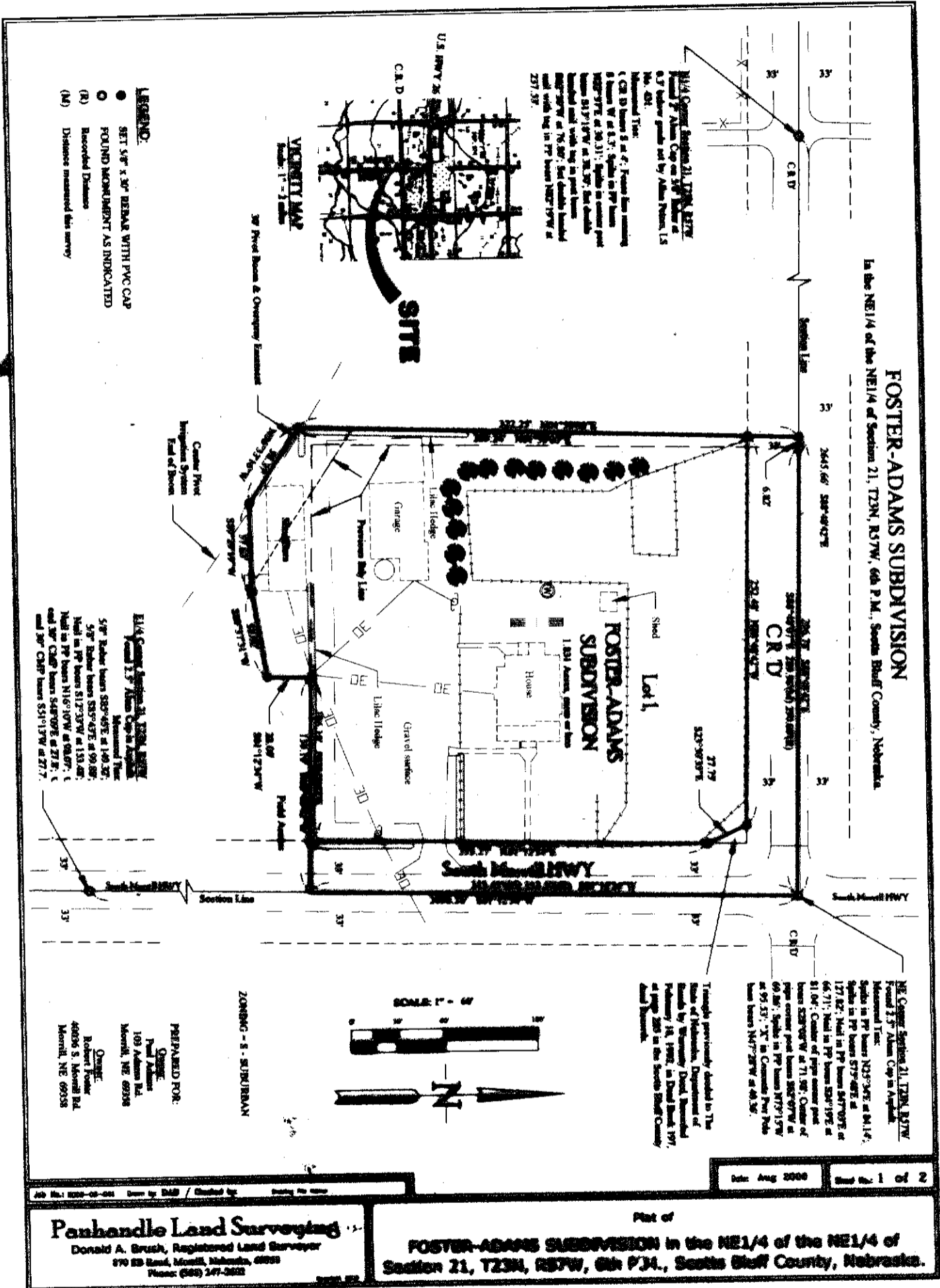
Date 10-23-06 Time 11:27 a.m.

Jean A. Bauer

REGISTER OF DEEDS

~~FILED~~
~~RECORDED~~
~~INDEXED~~
~~FILED~~

~~FILED~~
~~RECORDED~~
~~INDEXED~~
~~FILED~~



1 of 2
Aug 2006

Panhandle Land Surveying
 Donald A. Brush, Registered Land Surveyor
 870 8th Road, Morrill, Nebraska, 68901
 Phone: (402) 247-2822

Part of
FOSTER-ADAMS SUBDIVISION in the NE1/4 of the NE1/4 of
 Section 21, T23N, R37W, 6th P.M., Scotts Bluff County, Nebraska.

