



2006-2811

SUM. INDEX 28  
COMPUTER 28  
PICTURED 28  
INDEXED 28

SHEET 1 OF 2.

Inst. 2006 2811

LOTS 1 AND 2, LEONHARDT SUBDIVISION,  
A SUBDIVISION IN THE EAST HALF OF THE  
SOUTHEAST QUARTER OF SECTION 10,  
TOWNSHIP 23 NORTH RANGE 55 WEST OF THE 6TH PRINCIPAL  
MERIDIAN, SCOTTS BLUFF COUNTY, NEBRASKA.

RECORDED  
SCOTTS BLUFF COUNTY, NE  
Date 5-9-06 Time 10:30am

*Jean A. Bauer*

REGISTER OF DEEDS

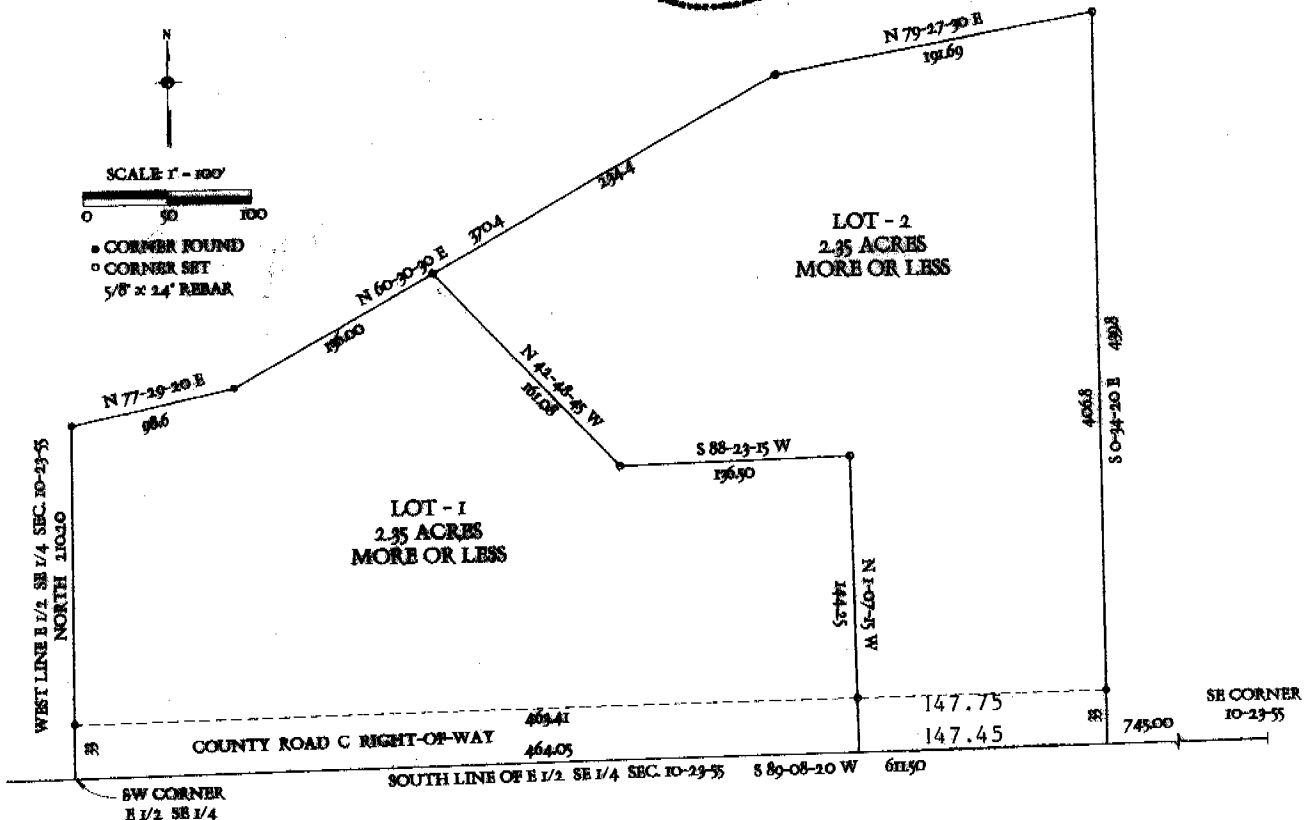
SURVEYOR'S CERTIFICATE

I, Robert J. Zumbahlen, do hereby certify that I have surveyed and subdivided into two Lots, a tract of land situated in the East Half of the Southeast Quarter of Section 10, Township 23 North, Range 55 West of the 6th Principal Meridian, Scotts Bluff County, Nebraska, such tract being more particularly described as follows: With reference to the southeast corner of such East Half of the Southeast Quarter; then South 89 degrees 08 minutes 20 seconds West on the south line of such East Half of the Southeast Quarter a distance of 745.0 feet to the Point of Beginning; then continuing South 89 degrees 08 minutes 20 seconds West on the south line of such East half of the Southeast Quarter, a distance of 611.5 feet to the southwest corner of such East Half of the Southeast Quarter; then North 00 degrees 00 minutes 00 seconds on the west line of such East Half of the Southeast Quarter, a distance of 210.20 feet; then North 77 degrees 29 minutes 20 seconds East a distance of 98.6 feet; then North 60 degrees 30 minutes 30 seconds East a distance of 370.4 feet; then North 79 degrees 27 minutes 30 seconds East a distance of 191.6 feet; then South 00 degrees 35 minutes 40 seconds East a distance of 439.7 feet to the Point of Beginning, containing an area of 4.70 acres, more or less.

That the accompanying plat represents a correct delineation of such survey and subdivision drawn to the scale of 100 feet to the inch; and that all dimensions are in feet and decimals of a foot.

WITNESS MY HAND AND SEAL  
this 31st day of October, 2005.

*Robert J. Zumbahlen*  
Robert J. Zumbahlen  
Nebraska LS#311



OWNER'S STATEMENT

Inst. 2006 - 2811

I, the undersigned, being the owner of that part of Section 10, Township 23 North, Range 55 West of the 6th Principal Meridian, Scotts Bluff County, Nebraska, as described in the foregoing "SURVEYOR'S CERTIFICATE" and shown on the accompanying plat have caused such real estate to be surveyed and platted as, LOTS 1 AND 2, LEONHARDT SUBDIVISION; A SUBDIVISION IN THE EAST HALF OF THE SOUTHEAST QUARTER OF SECTION 10, TOWNSHIP 23 NORTH, RANGE 55 WEST OF THE 6TH PRINCIPAL MERIDIAN, SCOTTS BLUFF COUNTY, NEBRASKA.

That the foregoing plat is made with the free consent and in accordance with the undersigned owner.

*Helen M. Leonhardt*  
Helen M. Leonhardt

ACKNOWLEDGEMENT

STATE OF NEBRASKA  
COUNTY OF SCOTTS BLUFF

Before me, a Notary Public, qualified and acting in said County, personally came Helen M. Leonhardt, to me known to be the identical person whose signature is affixed to the foregoing "OWNER'S STATEMENT" and acknowledged the execution thereof to be her voluntary act and deed.

WITNESS MY HAND AND SEAL this 6<sup>th</sup> day of May, 2006.



*Kathy Foyle*  
Notary Public

My Commission Expires: June 13, 2009

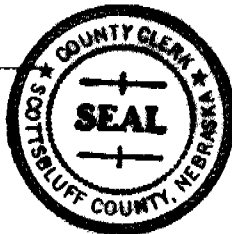
APPROVAL AND ACCEPTANCE

The foregoing plat of LOTS 1 AND 2, LEONHARDT SUBDIVISION, A SUBDIVISION IN THE EAST HALF OF THE SOUTHEAST QUARTER OF SECTION 10, TOWNSHIP 23 NORTH, RANGE 55 WEST OF THE 6TH PRINCIPAL MERIDIAN, SCOTTS BLUFF COUNTY, NEBRASKA, Hereby approved by the Scotts Bluff County Board of Commissioners, duly passed this 9<sup>th</sup> day of May, 2006, conditioned upon the fact that Scotts Bluff County will not provide street and alley maintenance until minimum standards have been met as outlined in a certain resolution dated April 15, 1974, a copy of which is attached and made a part of this approval.

*Mark A. Stanton*  
Chairman of the Board

ATTEST:

*Chris Alamy*  
County Clerk



SUBMITTALS 2  
DOC TAX \_\_\_\_\_ FE \_\_\_\_\_ NET \_\_\_\_\_  
FEES 11.50 \_\_\_\_\_ FE \_\_\_\_\_ NET \_\_\_\_\_  
TOTAL 11.50  
REC'D 1169 2006/05/06  
NET \_\_\_\_\_