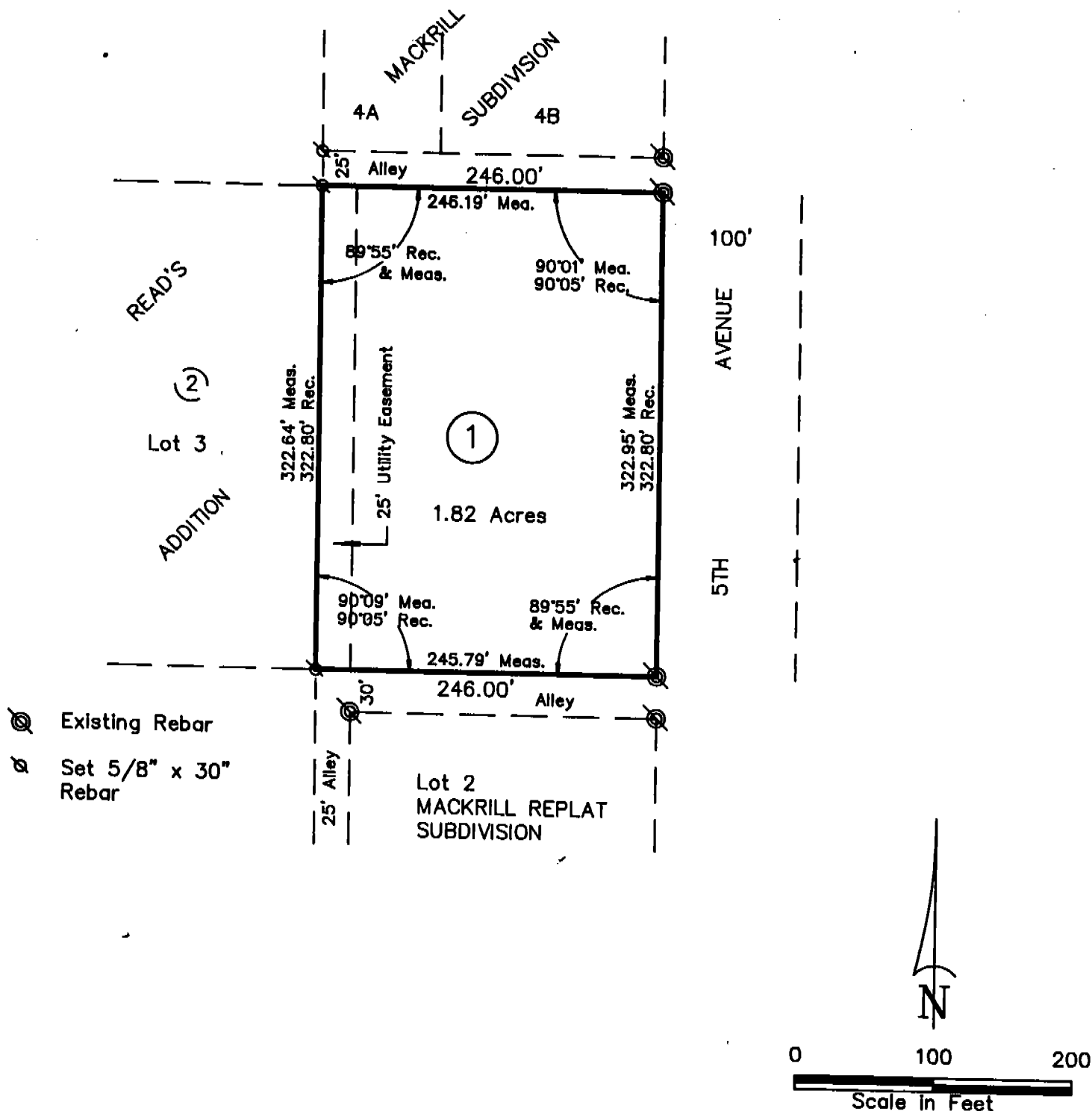


# FLOYD'S SUBDIVISION

Block One

A subdivision of vacated Lots 4C through 4G, Mackrill Subdivision, a subdivision of part of Lot 4, Block 2, Read's Addition; and vacated Lot 1, Mackrill Replat, a replat of Lots 4H and 4I, Mackrill Subdivision, a subdivision in the City of Scottsbluff, Nebraska and the vacated alley lying adjacent to the West line of Lots 4C through 4G, Mackrill Subdivision and Lot 1, Mackrill Replat, a subdivision in the City of Scottsbluff, Scotts Bluff County, Nebraska.



### SURVEYOR'S CERTIFICATE

I, Kelly A. Beatty, a Nebraska Registered Land Surveyor, hereby certify that I have surveyed and prepared a plat of FLOYD'S SUBDIVISION, a subdivision of vacated Lots 4C through 4G, Mackrill Subdivision, a subdivision of part of Lot 4, Block 2, Read's Addition, and vacated Lot 1, Mackrill Replat, a replat of Lots 4H and 4I, Mackrill Subdivision, a subdivision in the City of Scottsbluff, Nebraska, and the vacated alley lying adjacent to the West line of Lots 4C through 4G, Mackrill Subdivision, and Lot 1, Mackrill Replat, a subdivision in the City of Scottsbluff, Scotts Bluff County, Nebraska.

That the accompanying plat is a true delineation of said survey and plat drawn to a scale of 100 feet to the inch. That all dimensions are in feet and decimals and that each lot bears its own number designation. That the boundary of the plat is shown with a heavy solid line with dashed lines being shown for orientation purposes only.

WITNESS MY HAND SEAL this 3rd day of June 19 92  
FOR THE FIRM OF M. C. SCHAFF AND ASSOCIATES, INC.

*Kelly A. Beatty*  
Kelly A. Beatty, Nebraska Registered Land Surveyor, L. S. 476



FLOYD'S SUBDIVISION  
SCOTTSBLUFF, NEBRASKA  
Sheet 2 of 2

OWNER'S STATEMENT

We, the undersigned, being the owners of vacated Lots 4C through 4G, Mackrill Subdivision, a subdivision of part of Lot 4, Block 2, Read's Addition and vacated Lot 1, Mackrill Replat, a replat of Lots 4H and 4I, Mackrill Subdivision, as described in the foregoing "Surveyor's Certificate" and shown on the accompanying plat have caused such real estate to be surveyed and platted as FLOYD'S SUBDIVISION, a subdivision in the City of Scottsbluff, Scotts Bluff County, Nebraska.

That the foregoing plat is made with the free consent and in accordance with the desires of the undersigned owners.

We hereby dedicate the easement shown on the plat to the use and benefit of the public.

Dated this 11<sup>th</sup> day of JUNE, 19 92.

Floyd's Sales and Service, Inc.

Don Gillam  
Don Gillam, President

ACKNOWLEDGEMENT

STATE OF NEBRASKA)  
COUNTY OF SCOTTS BLUFF)

Before me, a Notary Public, qualified and acting in said County, personally came Don Gillam, President of Floyd's Sales and Service, Inc. to me known to be the identical person whose signature is affixed to the foregoing "Owner's Statement" and acknowledged the execution thereof to be his voluntary act and deed.

WITNESS MY HAND AND NOTARIAL SEAL this 11<sup>th</sup> day of JUNE, 19 92



Kelly B. Gallawa  
Notary Public

My Commission Expires: DEC. 2, 1995

APPROVAL AND ACCEPTANCE

The foregoing plat of FLOYD'S SUBDIVISION, hereby approved by the Mayor and City Council of the City of Scottsbluff, Nebraska by resolution duly passed this 13<sup>th</sup> day of July, 19 92.

Donald E. Sumner  
Mayor

ATTEST:  
[Signature]  
City Clerk  
MTM 16  
GEN. 13  
PICT. \_\_\_\_\_  
COMPARED \_\_\_\_\_  
\$13.50

State of Nebraska, Scotts Bluff County ss.  
Entered in Numerical Index and filed for record the 31 day of July, 19 92 at 11:41 o'clock A.M., and recorded in Book 198 of Deeds on page 540

Mary J. Keller  
Register of Deeds  
By \_\_\_\_\_ Deputy