

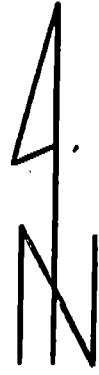
18

NOTE: See Replat of Lots 1 & 2, Block 2, County Addition, 212-608

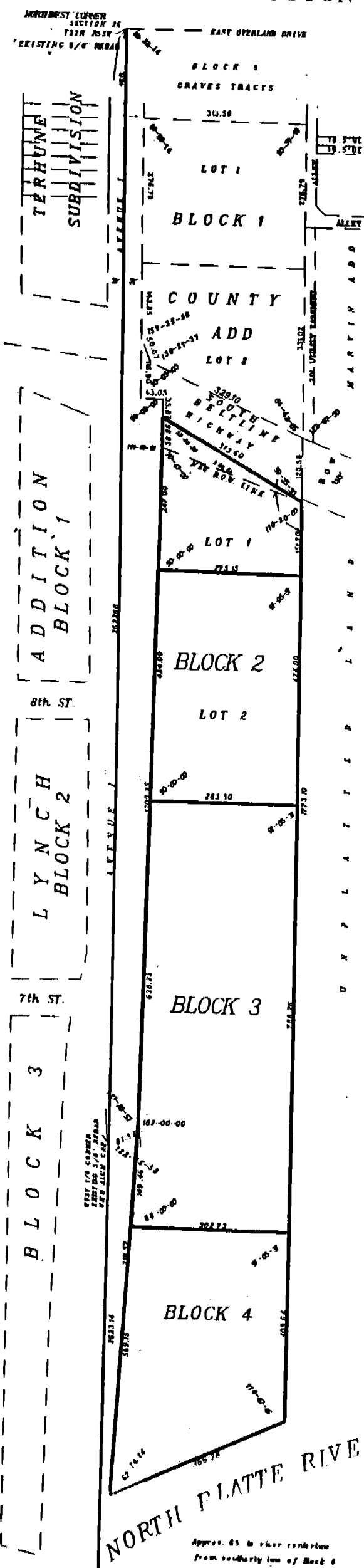
# FINAL PLAT LOTS 1 & 2, BLOCK 2 AND BLOCKS 3 AND 4 COUNTY ADDITION

629

3649



1" = 100'



NUM. B  
 GEN. 88  
 PICT. \_\_\_\_\_  
 COMPARED \_\_\_\_\_

3649

State of Nebraska, Scotts Bluff County ss.  
 Entered in Numerical Index and filed for  
 record the 16 day of August, 1991  
 at 1:58 o'clock P.M., and recorded in  
 Book 195 of deeds  
 on page 629  
Mary Jo Ellis  
 Register of Deeds  
 By Pauline C. Haug Deputy

## SURVEYOR'S CERTIFICATE

I, Duane E. Stott, a Nebraska Registered Land Surveyor, hereby certify that I have surveyed a tract of land accreted to Governmnet Lot 1, of Section 26, Township 22 North, Range 55 West of the 6th P.M., in the City of Scottsbluff, Scotts Bluff County, Nebraska, and that said tract shall be know as LOTS 1 AND 2, BLOCK 2 AND BLOCKS 3 AND 4 COUNTY ADDITION, an addition in the City of Scottsbluff; Scotts Bluff County, Nebraska, the boundary of which is more particularly described as follows;

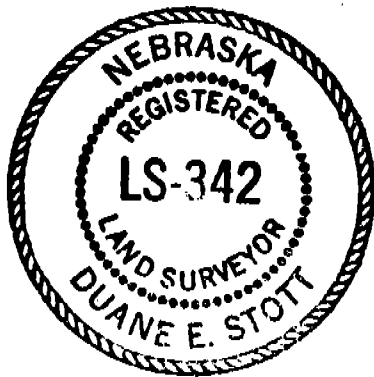
With reference to the Northwest corner of Section 26, thence southerly on the on the West line of said section, also being the West line of Government Lot 1, a distance of 648.61 feet, thence a deflection angle left of 89 degrees, 22 minutes, 14 seconds, a distance of 33.00 feet, thence a deflection angle right of 89 degrees, 22 minutes 14 seconds, a distance of 537.54 feet, thence a deflection angle left of 89 degrees, 57 minutes, 00 seconds, a distance of 43.05 feet, thence a deflection angle right of 90 degrees, 00 minutes, 00 seconds, a distance of 35.87 feet to the TRUE POINT OF BEGINNING, thence continuing southerly on an extension of the last described course, a distance of 58.86 feet, thence a deflection angle right of 01 degree, 00 minutes, 00 seconds, a distance of 1309.25 feet, thence a deflection angle right of 02 degrees, 00 minutes, 00 seconds, a distance of 718.57 feet to a point on the North bank of the North Platte River, thence a deflection angle left of 117 degrees, 45 minutes, 46 seconds, along said North bank, a distance of 366.28 feet, thence a deflection angle left of 65 degrees; 17 minutes, 14 seconds, a distance of 1773.10 feet, the last described course being a southerly extension of the East line of Block 1, County Addition according to the recorded plat thereof, thence a deflection angle left of 59 degrees; 35 minutes, 30 seconds, a distance of 313.60 feet to the point of beginning, containing an area of 12.94 acres more or less.

That the accompanying plat is a true delineation of such survey and subdivision drawn to a scale of 100 feet to the inch, that all corners are marked with 5/8" X 30" iron rods, that each lot and block bears its own number and that the boundary of the subdivision is shown on the plat with a heavy solid line with dashed lines being shown for orientation purposes only.

WITNESS MY HAND AND SEAL this 7<sup>TH</sup> day of August, 1991

*Duane E. Stott*

Duane E. Stott, Nebraska Registered  
Land Surveyor, L.S. 342



DEDICATION AND OWNER'S STATEMENT

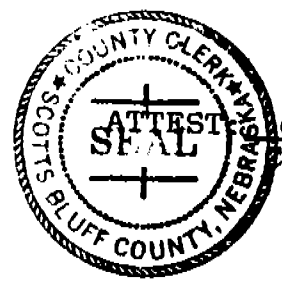
The undersigned, being the owner of that part of the West Half of Section 26, Township 22 North, Range 55 West of the 6th P.M., Scotts Bluff County, Nebraska, as described in the foregoing "Surveyor's Certificate" and shown in the accompanying plat, have caused such real estate to be surveyed and platted as LOTS 1 AND 2, BLOCK 2 AND BLOCKS 3 AND 4 COUNTY ADDITION, an addition in the City of Scottsbluff, Scotts Bluff County, Nebraska.

The foregoing subdivision of COUNTY ADDITION and the dedication of a portion of South Beltline Highway is made with the free consent and in accordance with the desires of the undersigned owner.

The Board of Commissioners of Scotts Bluff County, Nebraska, hereby dedicate the portion of the South Beltline Highway shown on the plat to the use and benefit of the public and to the City of Scottsbluff, Nebraska.

DATED this 5th day of August, 1991.

*[Signature]*  
Chairman of the Board



*[Signature]*  
County Clerk

DATE: Aug 5, 1991

APPROVAL AND ACCEPTANCE

The foregoing plat of COUNTY ADDITION hereby approved by the Mayor and City Council by resolution duly passed the 12th day of August, 1991

*[Signature]*  
Mayor

ATTEST: *[Signature]*  
City Clerk

