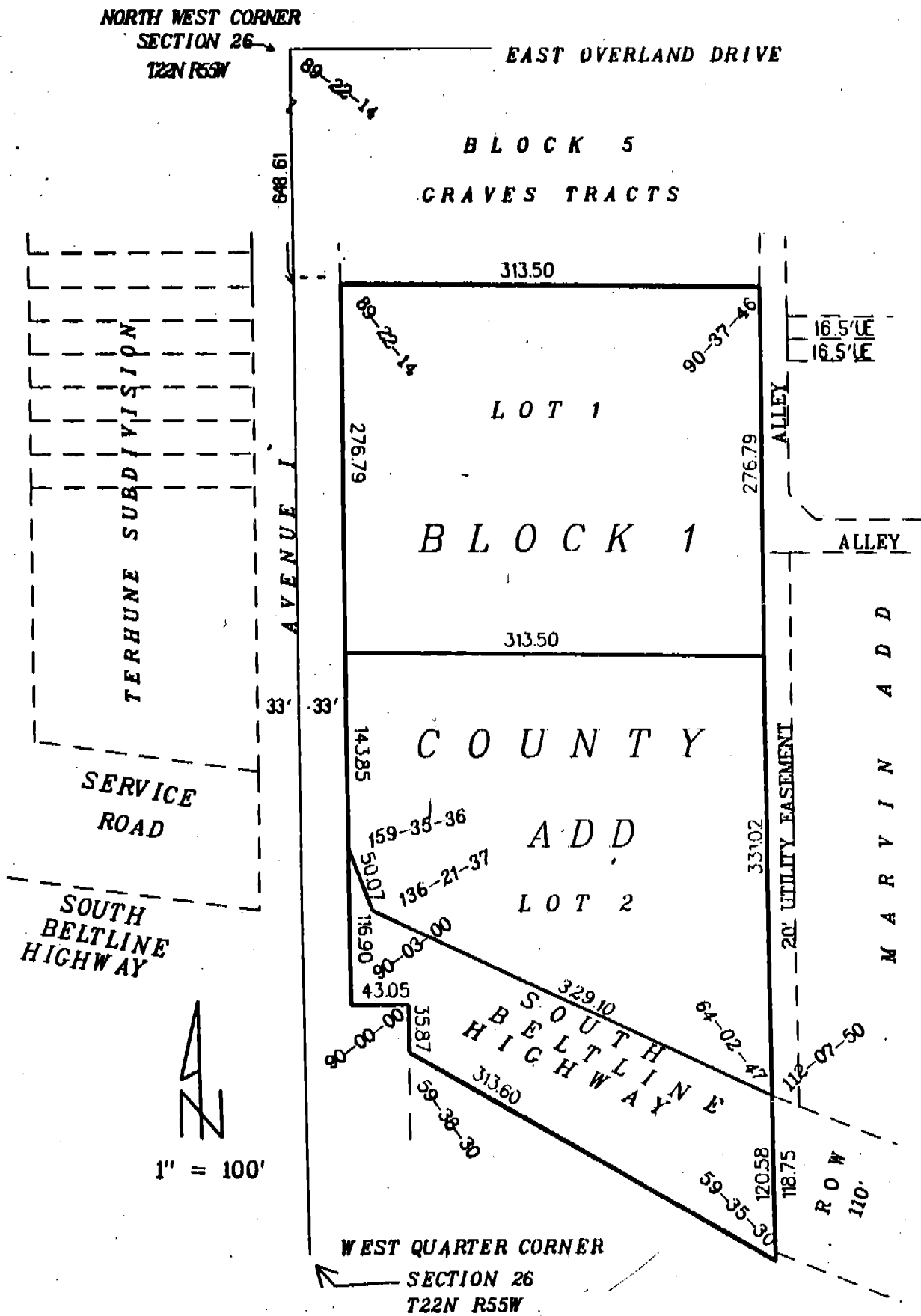


FINAL PLAT

COUNTY ADDITION

LOTS 1 AND 2 BLOCK 1



State of Nebraska, Scotts Bluff County ss.
 Entered in Numerical Index and filed for
 record the 16 day of August, 1991
 at 1:55 o'clock P.M., and recorded in
 Book 195 of Deeds
 on page 626
Mary Jo Ellis
 Register of Deeds
 By Pauline Kaye Deputy

NUM. B
 GEN. 11
 PICT. _____
 COMPARED _____

3647

SURVEYOR'S CERTIFICATE

I, Duane E. Stott, a Nebraska Registered Land Surveyor, hereby certify that I have surveyed and prepared a plat of Lots 1 and 2, Block 1, County Addition to the City of Scottsbluff, Scotts Bluff County, Nebraska, the boundary of which is more particularly described as follows;

With reference to the Northwest corner of Section 26, thence southerly on the West line of the Northwest Quarter of said section a distance of 648.61 feet, thence a deflection angle left of 89 degrees, 22 minutes, 14 seconds a distance of 33.00 feet to the TRUE POINT OF BEGINNING, thence continuing easterly on an extension of the last described course, a distance of 318.50 feet, thence a deflection angle right of 89 degrees, 22 minutes, 14 seconds, a distance of 725.89 feet, thence a deflection angle right of 120 degrees, 24 minutes, 30 seconds, a distance of 318.60 feet, thence a deflection angle right of 59 degrees, 38 minutes, 30 seconds, a distance of 351.87 feet, thence a deflection angle left of 90 degrees, 00 minutes, 00 seconds, a distance of 43.05 feet to a point which is 33.00 feet easterly at right angles from the West line of said Section 26, thence a deflection angle right of 89 degrees, 57 minutes 00 seconds on a line parallel with and 33.00 feet distant easterly from said West line of Section 26, a distance of 537.54 feet to the point of beginning, containing an area of 4.57 acres more or less.

That the accompanying plat is a true delineation of such survey and subdivision drawn to a scale of 100 feet to the inch, that all corners are marked with 5/8" X 30" iron rods. That each lot and block bears its own number. That the boundary of the subdivision is shown on the plat with a heavy solid line with dashed lines being shown for orientation purposes only. A portion of Block 1, County Addition has been previously conveyed to the State Of Nebraska Department Of Roads for right of way purposes.

WITNESS MY HAND AND SEAL this 27th day of August, 1891

Duane E. Stott

Duane E. Stott, Nebraska Registered
Land Surveyor, L.S. 342



DEDICATION AND OWNER'S STATEMENT

The undersigned, being the owner of Block 1, COUNTY ADDITION, in the City of Scottsbluff, Scotts Bluff County, Nebraska, as described in the foregoing " Surveyor's Certificate" and shown in the accompanying plat, have caused such real estate to be surveyed and subdivided as LOTS 1 AND 2, BLOCK 1, COUNTY ADDITION, an addition in the City of Scottsbluff, Scotts Bluff County, Nebraska.

The foregoing Subdivision of COUNTY ADDITION and the dedication of a portion of South Beltline Highway is made with the free consent and in accordance with the desires of the undersigned owner.

The Board of Commissioners of Scotts Bluff County, Nebraska, hereby dedicate the portion of the South Beltline Highway shown on the plat to the use and benefit of the public and to the City of Scottsbluff, Nebraska.

DATED this 5th day of August, 1991.

[Signature]
Chairman of the Board



[Signature]
County Clerk

DATE: Aug. 5, 1991

APPROVAL AND ACCEPTANCE

The foregoing subdivision of COUNTY ADDITION hereby approved by the Mayor and City Council by resolution duly passed the 12th day of August, 1991

[Signature]
Mayor

ATTEST: [Signature]
City clerk

