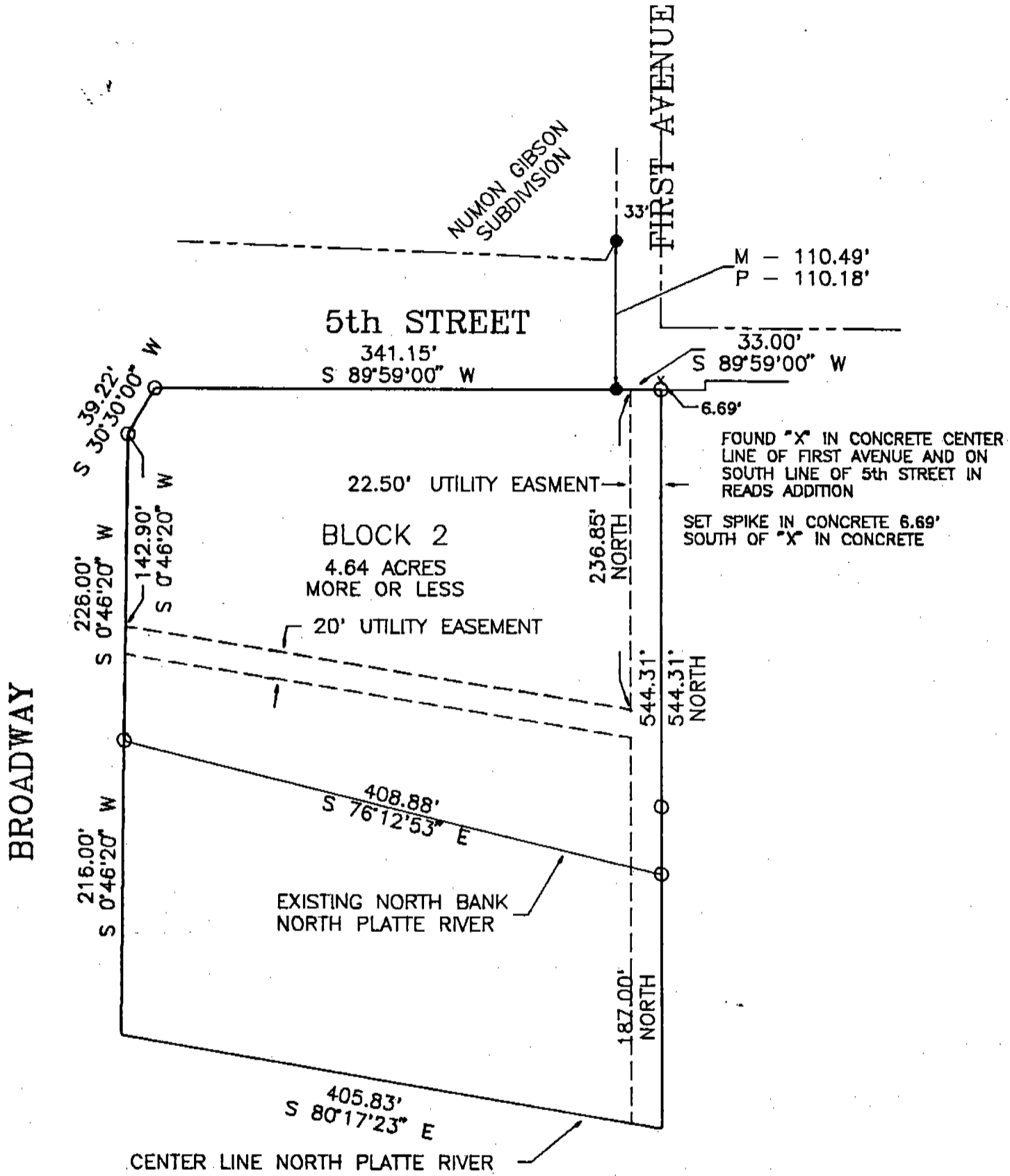


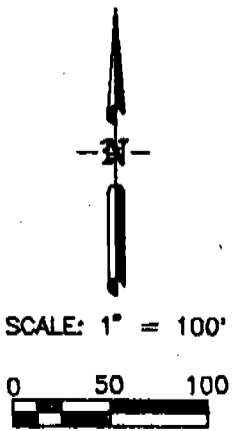
902

FINAL PLAT
REPLAT OF BLOCK TWO (2),
CROSSROADS SUBDIVISION, AN ADDITION TO
THE CITY OF SCOTTSBLUFF,
SCOTTS BLUFF COUNTY, NEBRASKA



OWNER:
Young Men's Christian Association
of Scottsbluff, Nebraska
22 S. Beltline Hwy E.
Scottsbluff, Nebraska

- CORNER FOUND
- CORNER SET (5/8" x 30" rebar)



prepared by
Baker & Associates
1915 First Avenue
Scottsbluff, NE. 69361

902

SURVEYOR'S CERTIFICATE

I, Robert J. Zumbahlen, do hereby certify that I have surveyed the Replat of:

Block Two (2), Crossroads Subdivision, an Addition to the City of Scottsbluff,
Scotts Bluff County, Nebraska.

That the accompanying plat represents a correct delineation of such survey drawn
to a scale of 100 feet to the inch; that 5/8" x 30" rebar were set at all corners not shown
as found corners; and that all dimensions are in feet and decimals of a foot.

WITNESS MY HAND AND SEAL this 7th day of September, 1988



Robert J. Zumbahlen
Robert J. Zumbahlen
Nebraska Registered Surveyor #331

902

OWNER'S STATEMENT

We, being the Owners of Block Two (2), Crossroads Subdivision, an Addition to the City of Scottsbluff, Scotts Bluff County, Nebraska as described in the foregoing "Surveyor's Certificate" and as shown by the accompanying plat have caused such real estate to be surveyed and replatted as Replat of Block Two (2), Crossroads Subdivision, an Addition to the City of Scottsbluff, Scotts Bluff County, Nebraska.

We hereby dedicate the streets and easements shown on and referred to in the plat to the use and benefit of the public.

The foregoing subdivision and plat is made with the free consent and in accordance with the desires of the corporation.

Date this 18 of Nov, 1988.

Young Men's Christian Association of Scottsbluff, Nebraska, Inc.

By: Greg Goerke PRESIDENT
Greg Goerke, President

Corporation Seal

Attested: Krusa Randall
Secretary

Note: Corporate Seal not affixed

ACKNOWLEDGEMENT

State of Nebraska)
Scotts Bluff County)ss.

Before me, a Notary Public, qualified and acting in said County, personally came Greg Goerke, President of Young Men's Christian Association of Scottsbluff, Nebraska, Inc., known to me to be the identical person who signed the foregoing "Owners' Statement" and acknowledged the execution thereof to be their voluntary act and deed.

WITNESS MY HAND AND SEAL this 18 day of Nov, 1988.

By: Nancy A. Kaps
Notary Public

Seal



My Commission Expires: 12/2/92

902

APPROVAL AND ACCEPTANCE

The foregoing Block Two (2), Crossroads Subdivision, an Addition to the City of Scottsbluff, Scotts Bluff County, Nebraska is approved and accepted by the Mayor and City Council of the City of Scottsbluff, Nebraska, by Resolution duly passed this 27th day of FEBRUARY, 1988.

By: Donald E. Overman
Donald E. Overman, Mayor

Attested: W.L. Ferguson
W.L. Ferguson, City Clerk



State of Nebraska, Scotts Bluff County ss.
Entered in Numerical Index and filed for
record the 6 day of March, 1989
at 11:55 o'clock A.M., and recorded in
Book 189 of Deeds
on page 236
Mary Jo Ellis
Register of Deeds
By _____ Deputy

NUM
GEN.
PICT.
COMPARED