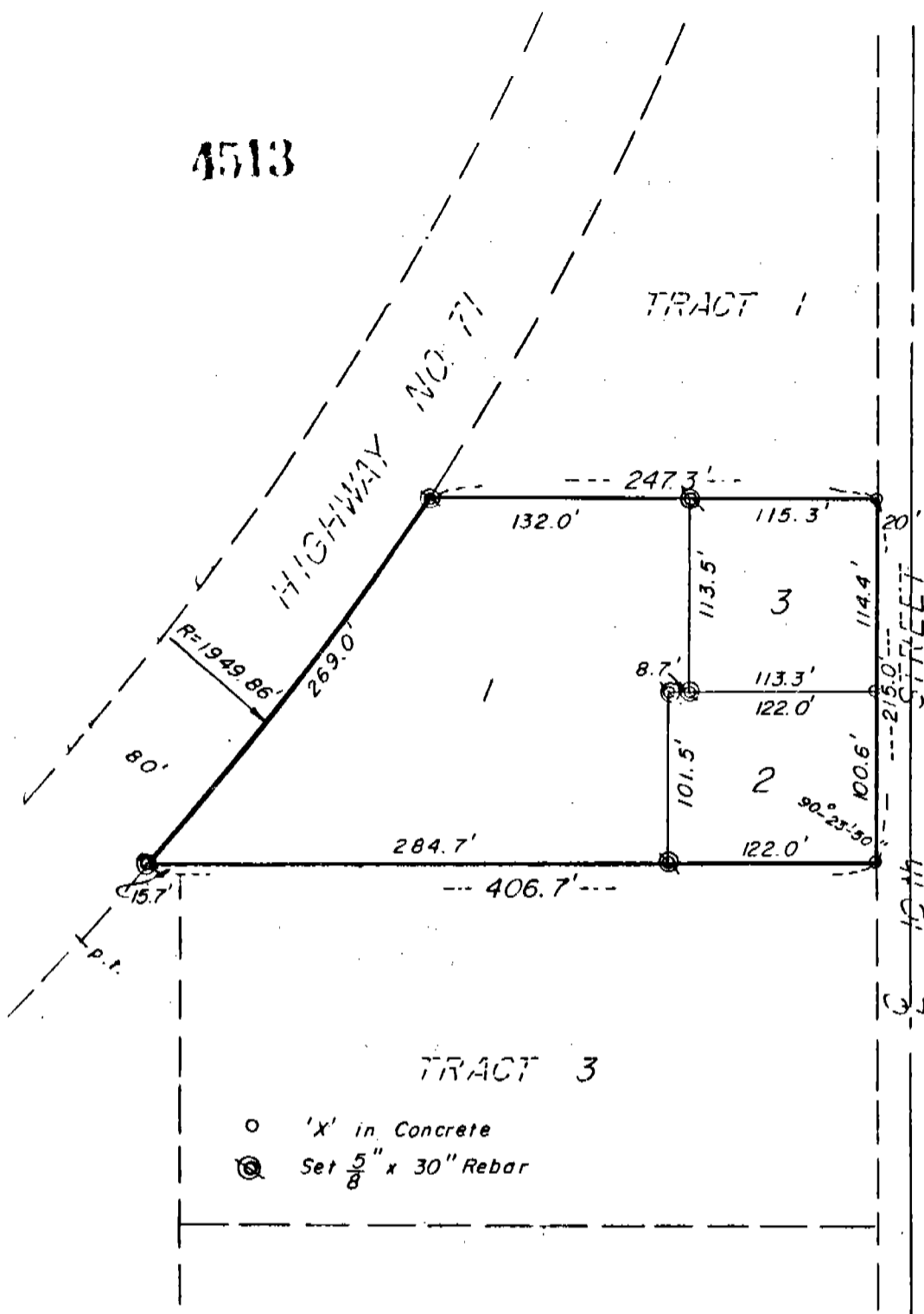


**SUBDIVISION OF TRACT 2, DUTTON TRACTS**

A Subdivision of part of the SW $\frac{1}{4}$  SE $\frac{1}{4}$  of Section 2, Township 21 N, Range 55 W, Scotts Bluff County, Nebraska.



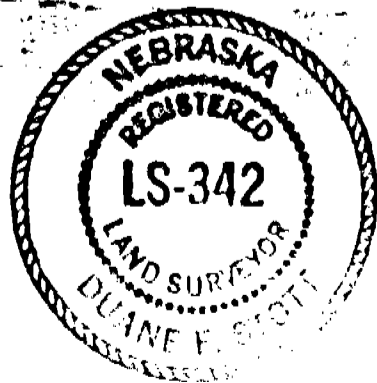
**SURVEYOR'S CERTIFICATE**

I, Duane E. Stott, a Nebraska Registered Land Surveyor, hereby certify that I have surveyed and prepared a plat of Lots 1, 2 and 3, a subdivision of Tract 2, Dutton Tracts in the City of Gering, Scotts Bluff County, Nebraska.

That the accompanying plat is a true delineation of such survey and subdivision drawn to a scale of 100 feet to the inch and that all corners are marked as shown and that all dimensions are in feet and decimals. That each lot bears its own number and that the boundary of the subdivision is shown on the plat with a heavy solid line.

WITNESS MY HAND AND SEAL this 12<sup>th</sup> day of September, 1986.

FOR THE FIRM OF M.C. SCHAFF & ASSOCIATES



*Duane E. Stott*  
 Duane E. Stott, Nebraska Registered Land Surveyor, L.S. 342



4513

APPROVAL AND ACCEPTANCE

The foregoing Lots 1, 2 and 3, a subdivision of Tract 2, Dutton Tracts approved and accepted by the Mayor and City Council of the City of Gering, Nebraska, by Resolution No. 10-86-3 duly passed this 27th day of October, 1986.



John McFadden  
Mayor

Pamela K. Richter  
City Clerk

State of Nebraska, Scotts Bluff County ss.  
Entered in Numerical Index and filed for  
record the 30 day of October, 1986  
at 4:05 o'clock P.M., and recorded in  
Book 182 of Deeds  
on page 700

Mary Jo Ellis  
Register of Deeds  
By \_\_\_\_\_ Deputy

NUMERICAL  
INDEX  
RETURNED