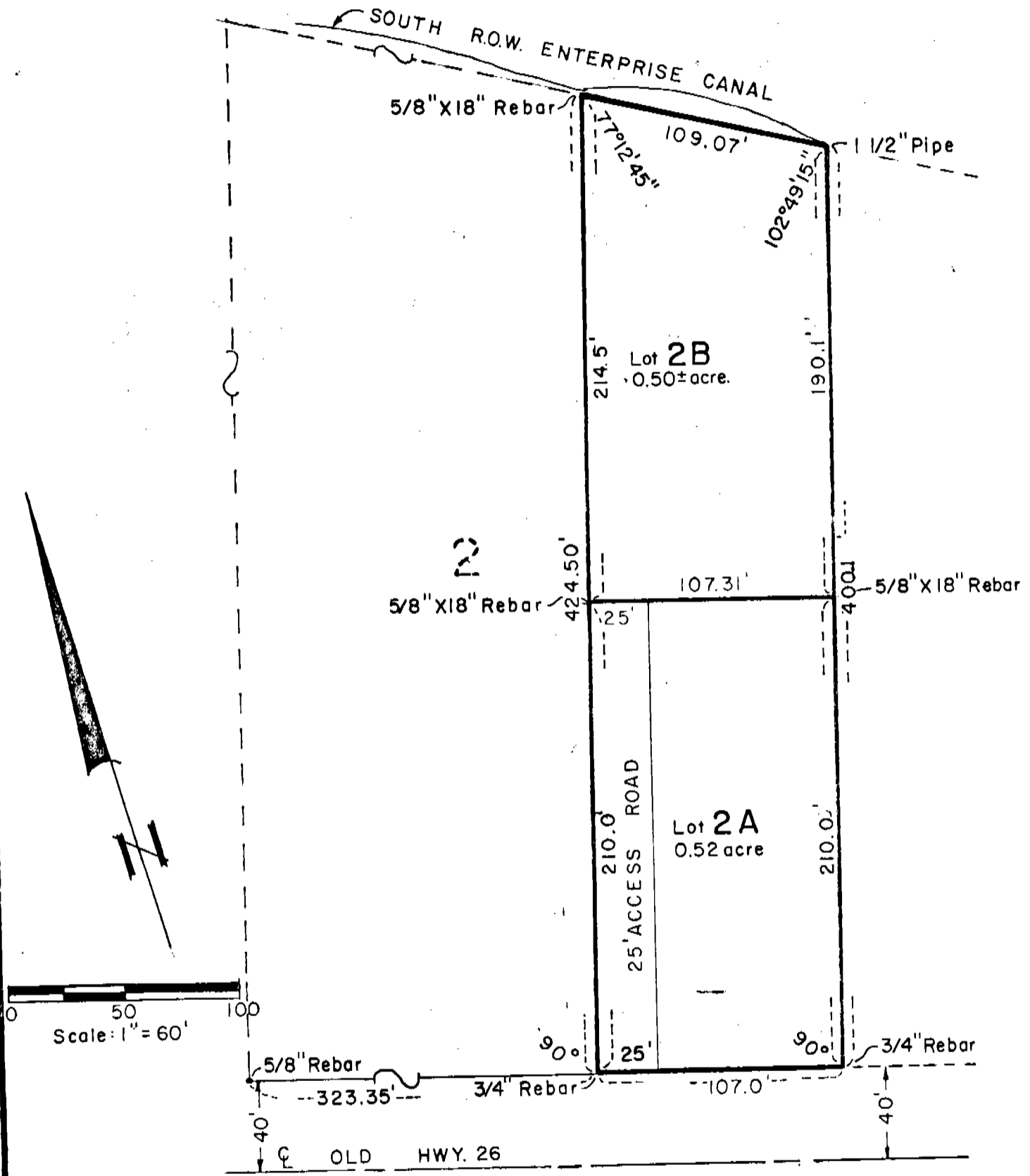


4922

# HOFFMAN ESTATES

A SUBDIVISION OF A PART OF TRACT # 2  
 H & M SUBDIVISION, SCOTTS BLUFF COUNTY, NEBR.  
 A SUBDIVISION IN THE (NW 1/4 NE 1/4) AND (NE 1/4 NW 1/4)  
 SEC (6), T22N, R55W, AND (SW 1/4 SE 1/4) AND (SW 1/4)  
 SEC (31) T23N, R55W OF THE 6TH P.M. SCOTTS BLUFF  
 COUNTY, NEBRASKA



4922

SURVEYOR S CERTIFICATE

I, Ronald L. Vogel a competent surveyor of Scotts Bluff County Nebraska hereby certify that a survey has been done under my direction on the East 107' of Tract #2 H & M Sub-division. A subdivision in the (NW ¼ NE ¼) and (NE ¼ NW ¼) Section (6) T22N R55W, and (SW ¼ SE ¼) and (SW ¼) Section (31), T23N, R55W of the 6th P.M. Scotts Bluff County Nebraska, and have further subdivided and surveyed such real estates as Lot 2A and Lot 2B, HOFFMAN ESTATES.

That the accompanying plat is a true delineation of such survey and subdivision, drawn to a scale of 60' to the inch. That all lot corners set are marked with 5/8" x 18" iron rods. That each lot bears its own number. That the boundary of the area subdivided is shown on the plat with a heavy solid line.

WITNESS MY HAND AND SEAL this 23rd day of October, 1983.

*Ronald L. Vogel*

RONALD L. VOGEL  
Nebraska Registered Land Surveyor  
L.S. 266



