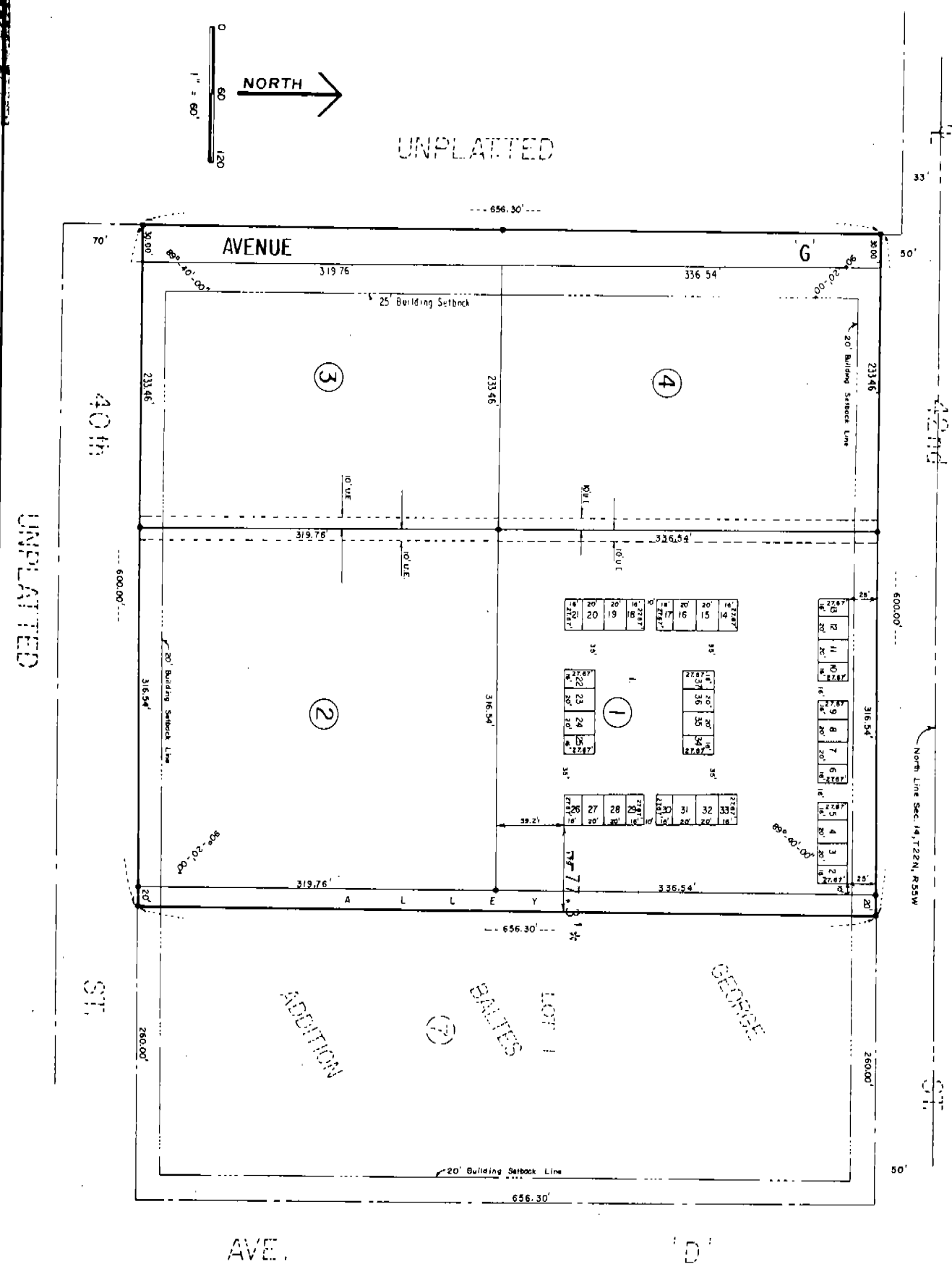


See Deed Book 176-10
 Replat of Lots 2-13, Block 1, George Baltes Replat
 NOTE: See Replat of Blocks 2, 3 & 4, George Baltes Replat-Deed 204-187
 NOTE: See Deed 217-739, plat of alley adjacent to these lots



GEORGE BALTES REPLAT
 LOTS 1-37, BLOCK 1 AND
 BLOCKS 2, 3 AND 4
 A Replat Of Lots 2, 3, 4 And 5, Block 7,
 George Baltes Addition, Scottsbluff, Nebraska.

*Plat corrected by Miscellaneous
 109-307
 4417

SURVEYOR'S CERTIFICATE

I, Duane E. Stott, a Nebraska Registered Land Surveyor, hereby certify that I have surveyed and prepared a plat of George Baltes Replat, Lots 1 through 37, Block 1 and Blocks 2, 3 and 4, a Replat of Lots 2, 3, 4 and 5, Block 7, George Baltes Addition in the North Half of the Northwest Quarter of Section 14, Township 22 North, Range 55 West of the 6th P.M. in the City of Scottsbluff, Scotts Bluff County, Nebraska, more particularly described as follows:

Beginning at the Northwest corner of Lot 1, Block 7, George Baltes Addition, thence southerly on the West line of said Lot 1, a distance of 656.30 feet to the Southwest corner of said Lot 1 also being the point of intersection with the North Right-of-way line of 40th Street in the City of Scottsbluff, thence a deflection angle right of 89°-40'-00", on said North Right-of-Way line, a distance of 600.00 feet, thence a deflection angle right of 90°-20'-00", a distance of 656.30 feet to the point of intersection with the South Right-of-way line of 42nd Street in the City of Scottsbluff, thence a deflection angle right of 89°-40'-00", on said South Right-of-way line, a distance of 600.00 feet to the POINT OF BEGINNING containing an area of 9.04 acres more or less.

That the accompanying plat is a true delineation of such survey and replat drawn to a scale of 60 feet to the inch. That all Block corners are marked with 3/4" X 36" iron rods and that all lot corners are marked with 3/4" X 18" iron rods. That all dimensions are in feet and decimals and that the boundary of the Replat is shown on the plat with a heavy solid line. That dashed lines are shown for orientation purposes.

WITNESS MY HAND AND SEAL this 20th day of October, 1982



FOR THE FIRM OF H. C. SCHAFF & ASSOCIATES, INC.

Duane E. Stott

Duane E. Stott, Nebraska Registered Land Surveyor, L.S. 342

OWNER'S STATEMENT

The undersigned, being the owner of Lots Two (2), Three (3), Four (4), and Five (5), Block Seven (7), George Baltes Addition to the City of Scottsbluff, Scotts Bluff County, Nebraska, according to the recorded plat thereof, have caused such real estate to be replatted as "Lots One (1) thru Thirty-seven (37), Block Seven (7) and Blocks Two (2), Three (3), and Four (4), Block Seven (7), a Replat of Lots Two (2), Three (3), Four (4) and (5), Block Seven (7), George Baltes Addition" an addition in the Scottsbluff, Nebraska, as shown on the accompanying plat.

Dated this 25 day of October, 1982

Henry E. Schneider

COUNTY OF SCOTTS BLUFF, STATE OF NEBRASKA

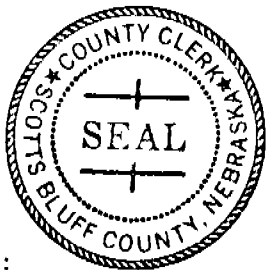
By Board of County Commissioners
By Henry E. Schneider, Chariman

ACKNOWLEDGMENT

STATE OF NEBRASKA,)
) ss
County of Scotts Bluff.)

On this 15 day of October, 1982, before the undersigned, a notary public duly commissioned for such County, personally appeared Henry E. Schneider, Chairman of the Board of County Commissioners of County of Scotts Bluff, State of Nebraska, and he acknowledged the execution of the replat attached hereto to be the voluntary act and deed of such County.

In witness whereof I have hereunto set my official hand and seal the date last above written.



Norma M. Zaerb
Notary Public *Acting Deputy County Clerk*

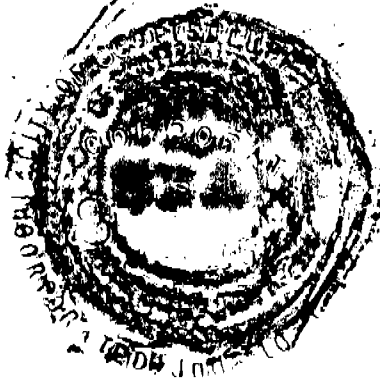
My commission expires:

APPROVAL AND ACCEPTANCE

The foregoing George Baltes Replat hereby approved by the Mayor and City Council of the City of Scotts Bluff by resolution duly passed this 25th day of October, 1982

Donald Edrman
Mayor

ATTEST: H. L. Ferguson
City Clerk



NUMERICAL
GENERAL
PICTURED

State of Nebraska, Scotts Bluff County ss.
Entered in Numerical Index and filed for
record the 29 day of October, 1982
at 1:15 o'clock P.M., and recorded in
Book 172 of Deeds
on page 276
Mary Jo. Lillis
Register of Deeds
By _____ Deputy

4417