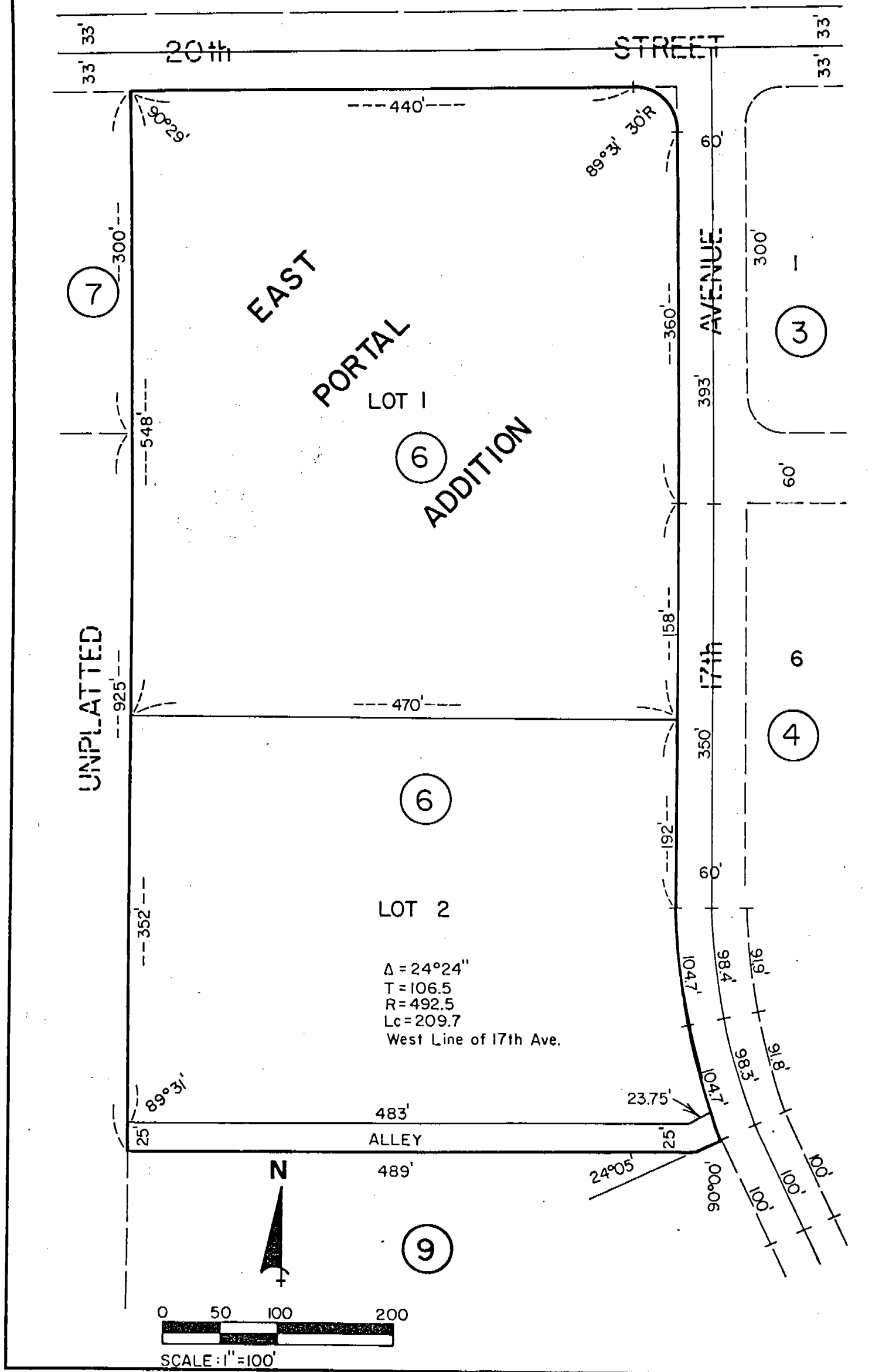


Note: See plat of vacated L 2, Bl 6, Subdivision of Block 6, & other land, now platted as East Portal Village Addition, Deed 209-457

SUBDIVISION *2459* OF BLOCK SIX, EAST PORTAL ADDITION TO THE CITY OF SCOTTSBLUFF, NE.



SUBDIVISION OF BLOCK SIX, EAST PORTAL ADDITION
CITY OF SCOTTSBLUFF, NEBRASKA
CONTINUATION SHEET 2 OF 3

2459

SURVEYOR'S CERTIFICATE

I, Ronald L. Vogel, a competent surveyor of Scotts Bluff County, Nebraska, hereby certify that I have surveyed Block Six (6), East Portal Addition to the City of Scottsbluff, Nebraska, according to the recorded plat thereof and have further subdivided Block Six (6) as shown by the accompanying plat.

That the accompanying plat is a true delineation of such subdivision, drawn to a scale of 100 feet to the inch. That all corners are marked with 5/8" x 1/8" iron rods and that all dimensions are in feet and decimals.

WITNESS MY HAND AND SEAL this 23rd day of March, 1981.



Ronald L. Vogel

RONALD L. VOGEL
Nebraska Registered Land Surveyor
L.S. 266