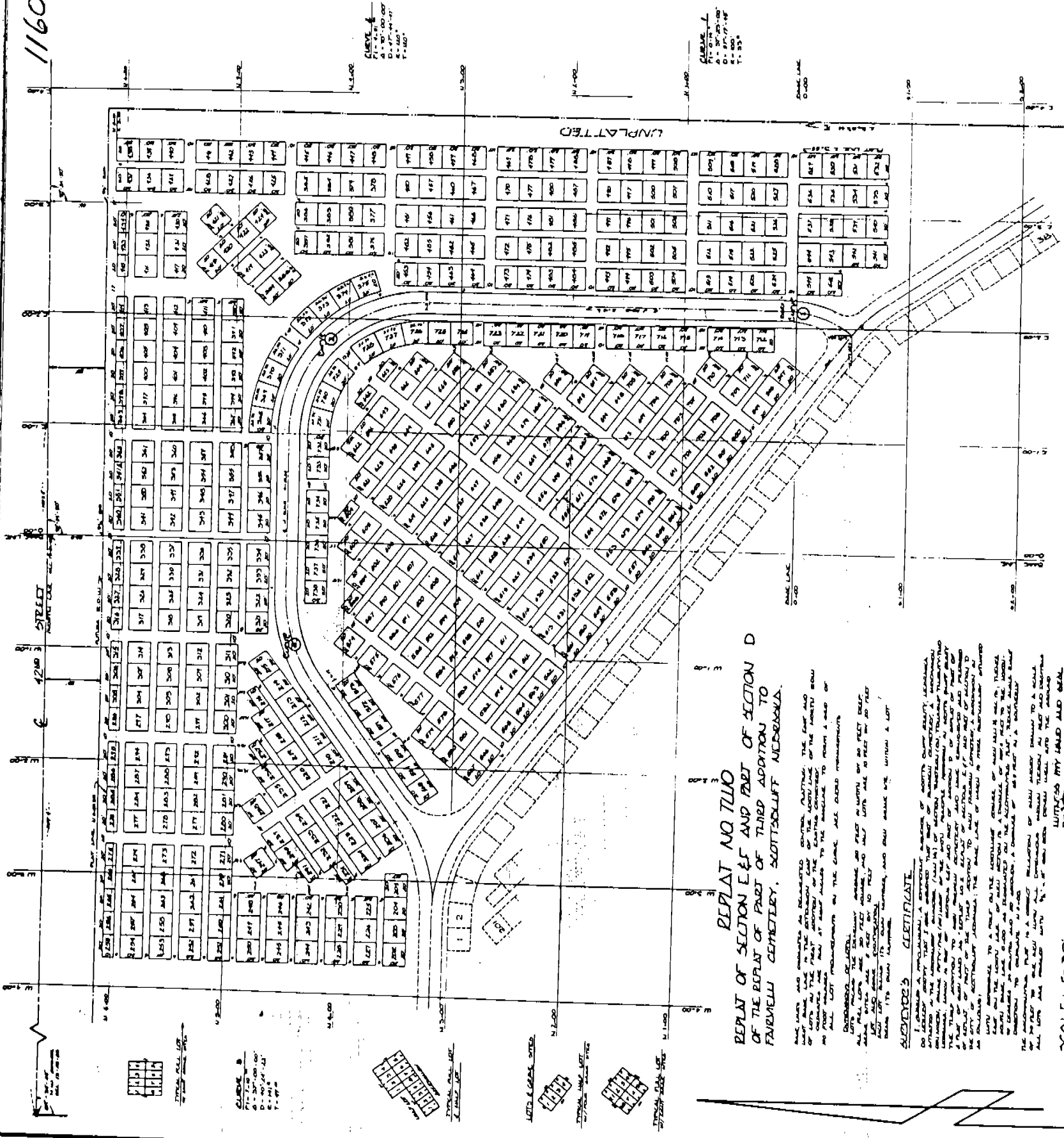


1160

21-12



REPLAT NO 1110
 REPLAT OF SECTION E & F AND PART OF SECTION D
 OF THE REPLAT OF PART OF THIRD ADDITION TO
 FAIRVIEW CEMETERY, SCOTTSBUFF NEBRASKA.

THIS PLAT AND MAPS HEREON AS DESCRIBED CONTAIN THE ENTIRE CONTENTS OF THE ORIGINAL PLAT AND MAPS OF THE SECTION E & F AND PART OF SECTION D OF THE REPLAT OF PART OF THIRD ADDITION TO FAIRVIEW CEMETERY, SCOTTSBUFF NEBRASKA. ALL THE LOT MEASUREMENTS ON THIS PLAT ARE CORRECT MEASUREMENTS.
 CORRECTIONS MADE.
 ALL LOTS ARE THE SAME AS THE ORIGINAL PLAT WITHIN 1/16 OF AN INCH.
 ALL LOTS ARE THE SAME AS THE ORIGINAL PLAT WITHIN 1/16 OF AN INCH.
 ALL LOTS ARE THE SAME AS THE ORIGINAL PLAT WITHIN 1/16 OF AN INCH.
 ALL LOTS ARE THE SAME AS THE ORIGINAL PLAT WITHIN 1/16 OF AN INCH.

ADVISEE'S CERTIFICATE
 I, CHARLES A. WATSON, COUNTY CLERK OF SCOTTSBUFF COUNTY, NEBRASKA, DO HEREBY CERTIFY THAT THE ABOVE DESCRIBED PLAT AND MAPS WERE FILED IN MY OFFICE ON THE 11TH DAY OF MARCH, 1910, AT 10 O'CLOCK A.M. AND THAT THE SAME ARE CORRECT AND COMPLETE. IN WITNESS WHEREOF I HAVE HEREON SET MY HAND AND SEAL AT SCOTTSBUFF, NEBRASKA, THIS 11TH DAY OF MARCH, 1910.
 CHARLES A. WATSON
 COUNTY CLERK

SCALE 1" = 50'

NOTE: SEE REPLAT NO. 3 SECTION F
 replat of Section F of Replat No. 2
 of Section E & F & Part of Section D,
 All part of Third Add., Fairview Cemetery

See Vacation Resolution of Blocks 202 to
 546, Resolution No. 95-5-19
 Misc. 136 page 470

