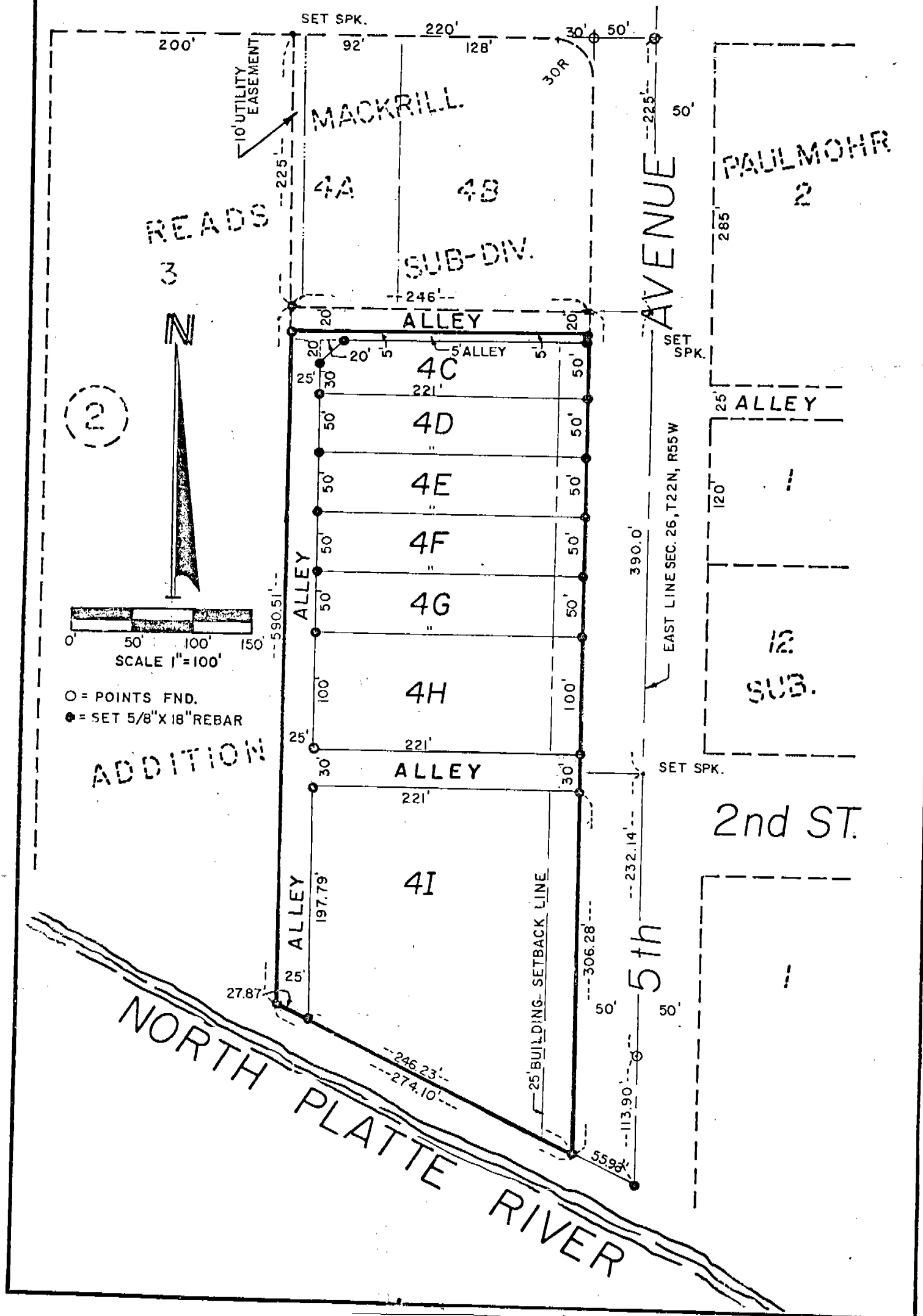


716

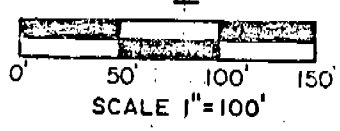
MACKRILL SUBDIVISION

A SUBDIVISION OF PART OF LOT 4, BLOCK 2, READS ADDITION IN THE CITY OF SCOTTSBLUFF, NEBRASKA

SOUTH BELTLINE HWY. EAST



(2)



O = POINTS FND.
 ● = SET 5/8" X 18" REBAR

ADDITION

NOTE: See Vacation-Misc. 129-569 &
 See Plat-Deed 198-540 →

FLOYD'S SUBDIVISION
 Block One

A subdivision of vacated Lots 4C through 4G, Mackrill Subdivision, a subdivision of part of Lot 4, Block 2, Read's Addition; and vacated Lot 1, Mackrill Replat, a replat of Lots 4H and 4I, Mackrill Subdivision, a subdivision in the City of Scottsbluff, Nebraska and the vacated alley lying adjacent to the West line of Lots 4C through 4G, Mackrill Subdivision and Lot 1, Mackrill Replat, a subdivision in the City of Scottsbluff, Scotts Bluff County, Nebraska.

31240

MACKRILL SUBDIVISION
SCOTTSBLUFF, NEBRASKA
CONTINUATION SHEET 2 OF 3

716

SURVEYOR'S CERTIFICATE

I, Ronald L. Vogel, a competent surveyor of Scotts Bluff County, Nebraska, hereby certify that I have surveyed a part of Lot Four (4), Block Two (2), Reads Addition in the City of Scottsbluff, Nebraska, according to the recorded plat thereof.

That I have further surveyed and subdivided a part of Lot Four (4), Block Two (2), Reads Addition to the City of Scottsbluff, Nebraska, as Lots 4C through 4I, Mackrill Subdivision, an Addition in the City of Scottsbluff, Nebraska including alleys therein.

That the accompanying plat is a true delineation of such survey and subdivision, drawn to a scale of 100 feet to the inch. That each new lot bears its own number and letter and that 5/8" x 18" iron rods are driven well into the ground at all corners of each lot. That all dimensions are in feet and decimals. That the boundary of the subdivision is shown on the plat with a heavy solid line and that adjoining subdivisions are shown dashed for orientation purposes.

WITNESS MY HAND AND SEAL this 21st day of January, 1981.



Ronald L. Vogel

RONALD L. VOGEL
Nebraska Registered Land Surveyor
L.S. 266

