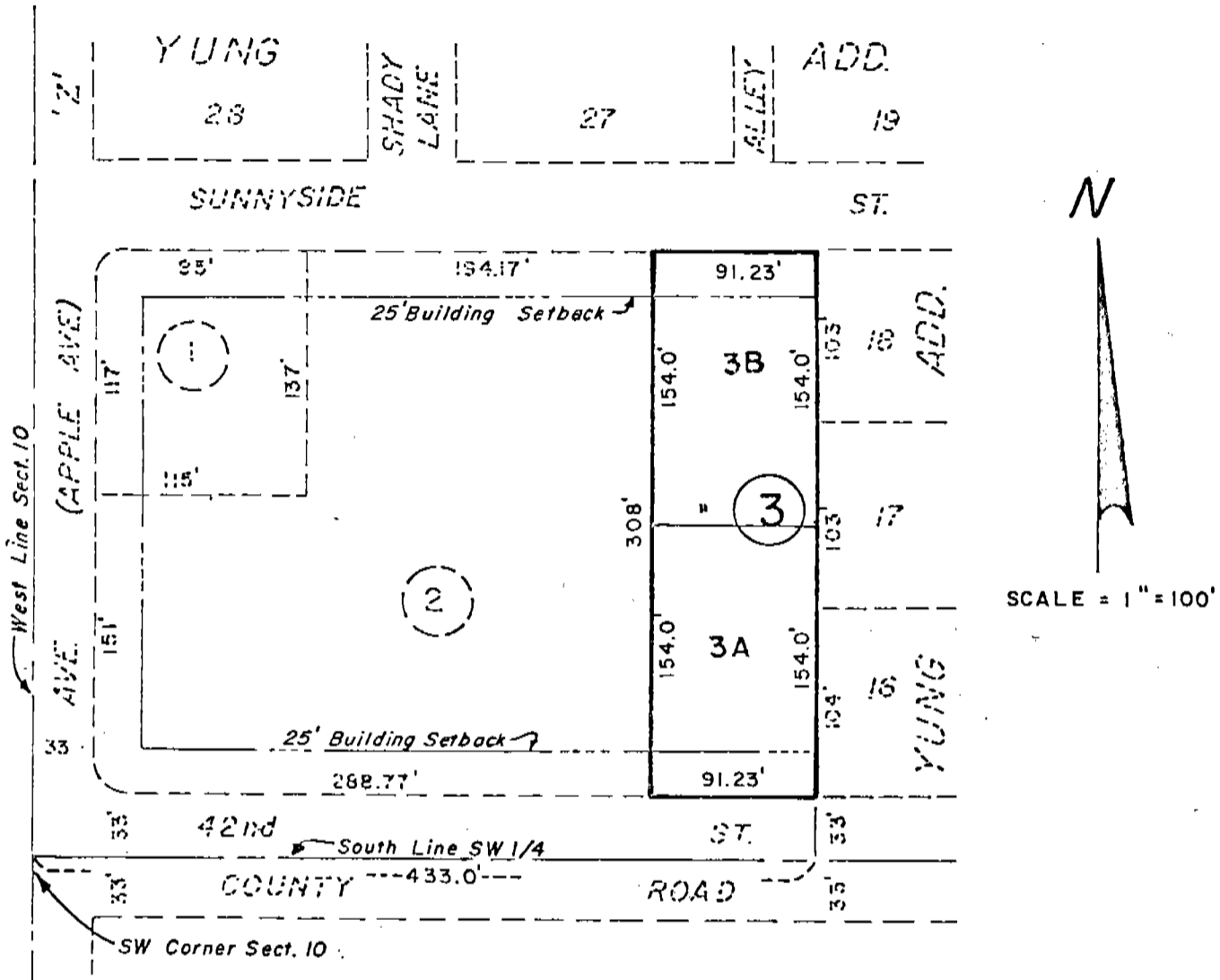


5231

SUBDIVISION OF BLOCK 3, BESAW SUBDIVISION
LOTS 3A & 3B

An Addition in Scotts Bluff County, Nebraska

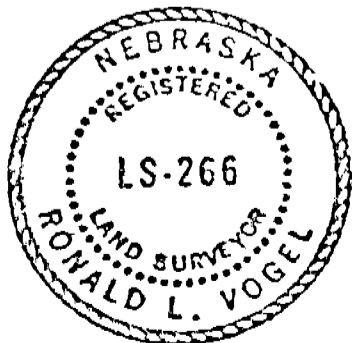


SURVEYOR'S CERTIFICATE

I, Ronald L. Vogel, Nebraska Registered Land Surveyor, hereby certify that I have surveyed and subdivided Block Three (3), Besaw Subdivision, a Subdivision in the County of Scotts Bluff, Nebraska, according to the recorded plat thereof and that such subdivided block shall be known as "Lots 3A and 3B, Block 3, Besaw Subdivision".

That the accompanying plat is a true delineation of such survey and subdivision, drawn to a scale of 100 feet to the inch. That all corners are marked with iron rods and that all dimensions are in feet and decimals. That the boundary of the block subdivided is shown on the plat with a heavy solid line and that adjoining subdivided lands are shown dashed for orientation purposes. That each lot and block bears its own number.

WITNESS MY HAND AND SEAL this 8th day of October, 1980.



Ronald L. Vogel
RONALD L. VOGEL
Nebraska Registered Land Surveyor
L.S. 266

2/616

SUBDIVISION OF BLOCK 3, BESAW SUBDIVISION
SCOTTS BLUFF COUNTY, NEBRASKA
CONTINUATION SHEET 2 OF 2

5231

OWNER'S STATEMENT

We, the undersigned, being the owners of Block Three (3), Besaw Subdivision, an Addition to Scotts Bluff County, Nebraska, according to the recorded plat thereof, as described in the foregoing "Surveyor's Certificate" and shown by the accompanying plat, have caused such real estate to be surveyed and platted as "Lots 3A and 3B, Subdivision of Block Three (3), Besaw Subdivision" an Addition to Scotts Bluff County, Nebraska.

The above described and foregoing subdivision and the Building Setback Designations are made with the free consent and in accordance with the desires of the undersigned owners.

Dated this 10th day of November, 1980.

Charles V. Besaw
Charles V. Besaw

Leonel Iris Besaw
Leonel Iris Besaw

ACKNOWLEDGEMENT

STATE OF NEBRASKA)
SCOTTS BLUFF COUNTY) ss.

Before me, a Notary Public, qualified in such County, personally came Charles V. Besaw and Leonel Iris Besaw, Husband and Wife, to me known to be the identical persons who signed the foregoing "Owner's Statement" and acknowledged the execution thereof to be their voluntary act and deed.

WITNESS MY HAND AND NOTARIAL SEAL this 13th day of November, 1980.

GENERAL NOTARY - State of Nebraska
CONNIE CURTIS
My Comm. Exp. May 12, 1983

Connie Curtis
Notary Public

My Commission expires: May 12, 1983

APPROVAL AND ACCEPTANCE

The foregoing plat of Subdivision of Block 3, Besaw Subdivision, Lots 3A and 3B, approved and accepted by the Mayor and City Council of the City of Scottsbluff, Nebraska, by resolution duly passed this 24th day of November, 1980.

Denzel E. Ormerod
MAYOR

ATTEST: A. H. Ferguson
CITY CLERK



State of Nebraska, Scotts Bluff County ss.
Entered in Numerical Index and filed for
record the 15 day of December 1980
at 4:00 o'clock P.M., and recorded in
Book 166 of Deeds
on page 616
Mary Jo Ellis
Register of Deeds
By _____ Deputy

