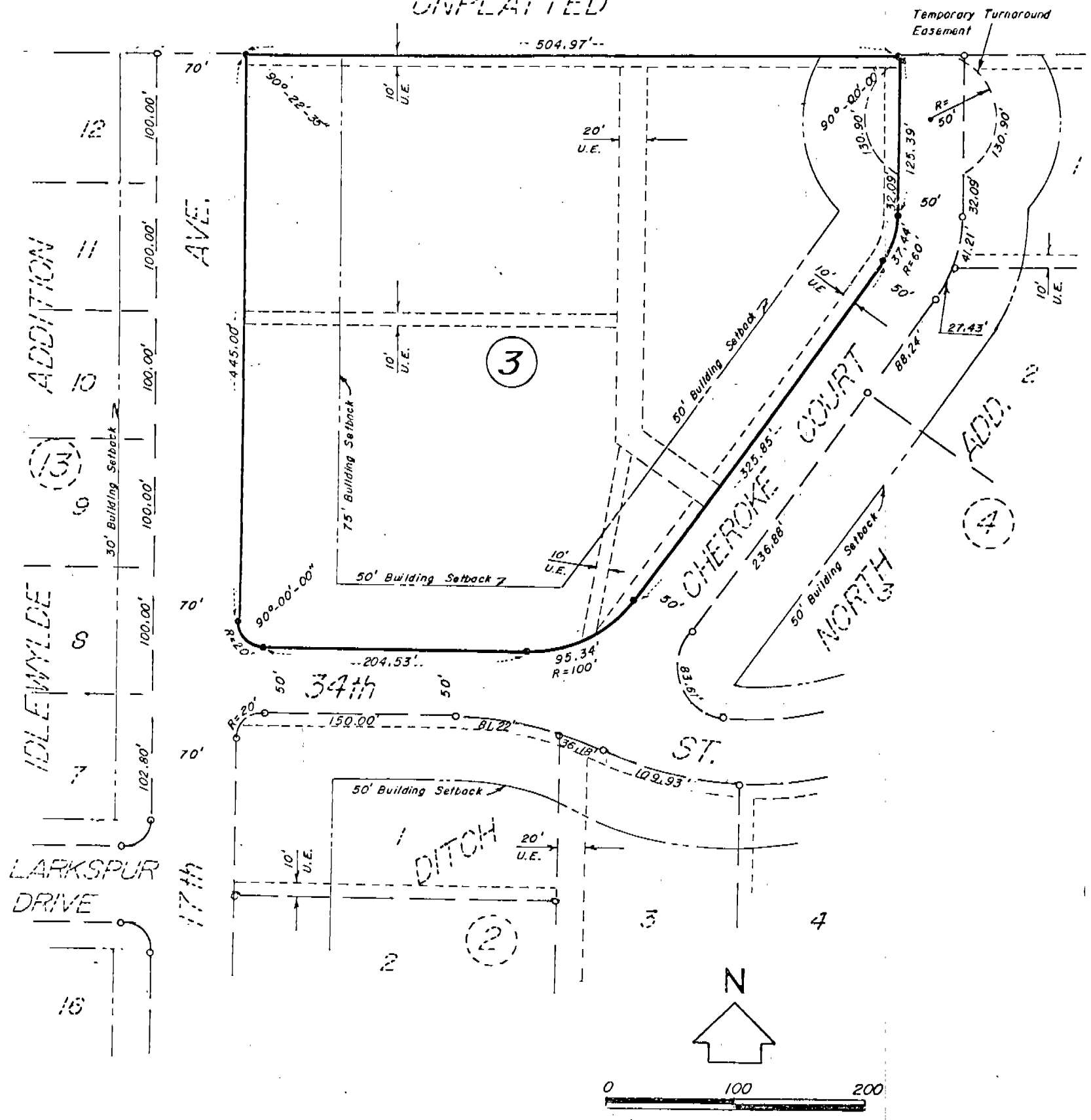


DITCH NORTH ADDITION BLOCK 3

5208

A Replat of Lots 1, 2, 3 and 4, Block 3,
Ditch North Addition, in the City of
Scottsbluff, Nebraska.

UNPLATTED



Scale in Feet
5.40 Acres

State of Nebraska, Scotts Bluff County ss.
 Entered in Numerical Index and filed for
 record the 15 day of December 1980
 at 10:00 o'clock A.M., and recorded in
 Book 166 of Deeds
 on page 604
Mary Jo Ellis
 Register of Deeds
 By _____ Deputy

21604

