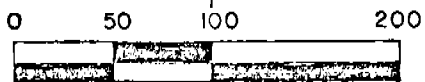
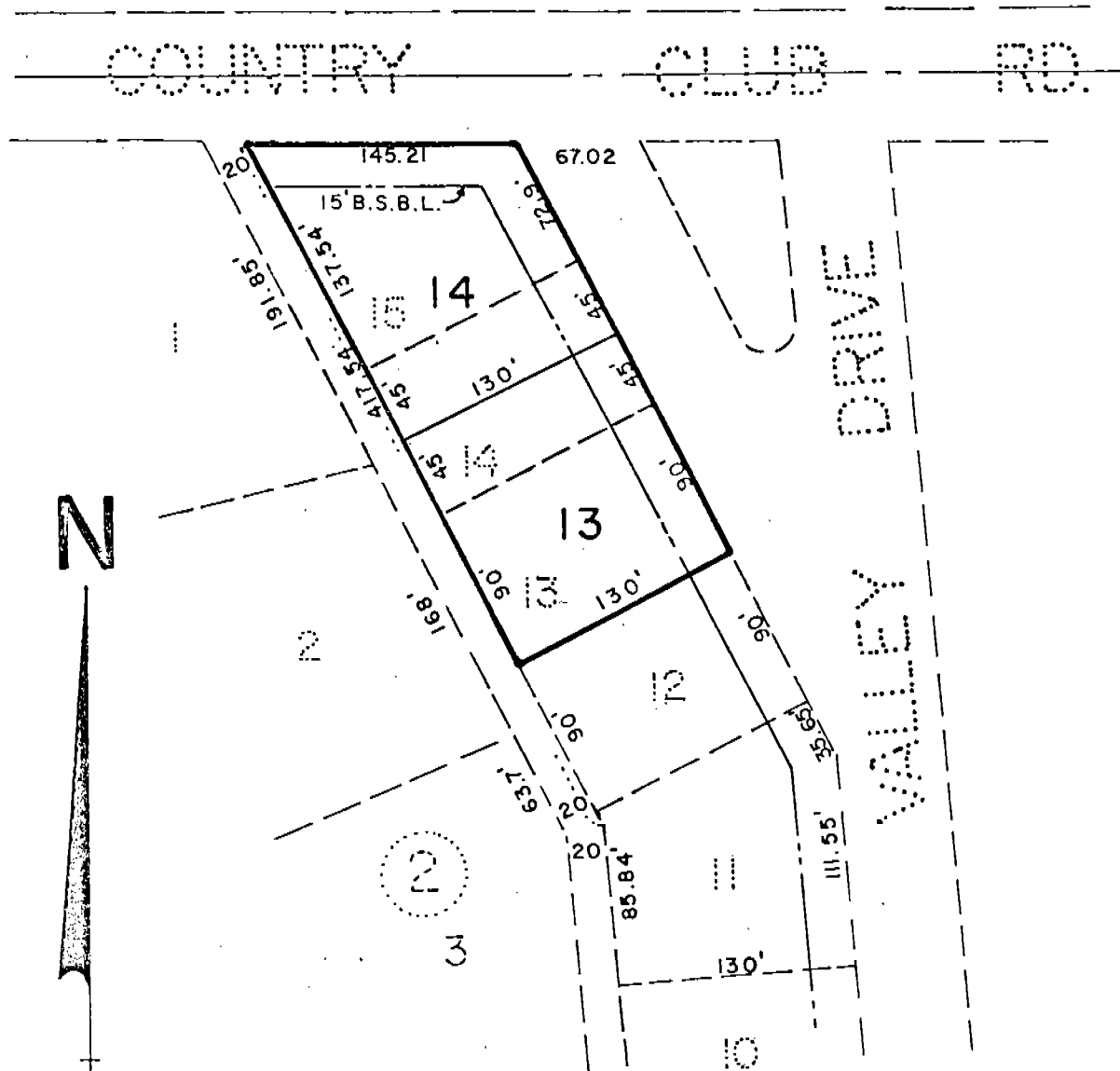


# MONUMENT HEIGHTS REPLAT

LOTS 13, AND 14  
REPLAT OF LOTS 13, 14, AND 15, BLOCK 2 OF  
MONUMENT HEIGHTS ADDITION IN THE CITY  
OF GERING, NEBRASKA

1761



SCALE 1"=100'

### SURVEYOR'S CERTIFICATE

I, Ronald L. Vogel, a Nebraska Registered Land Surveyor, hereby certify that I have surveyed Lots Thirteen (13), Fourteen (14) and Fifteen (15), Block Two (2) of Monument Heights, an Addition to the City of Gering, Nebraska, and have hereby prepared a replat of suchs 13, 14 and 15, to be known as Lots 13 and 14 as shown by the accompanying plat.

That the above plat is a true delineation of such survey and replat, drawn to a scale of 100 feet to the inch. That all corners are marked with iron rods and that all dimensions are in feet and decimals. That each new lot bears its own number and that the boundary of the land replatted is shown on the drawing with a heavy solid line.

WITNESS MY HAND AND SEAL this 7th day of April, 1980.



*Ronald L. Vogel*  
RONALD L. VOGEL  
Nebraska Registered Land Surveyor  
L.S. 266

