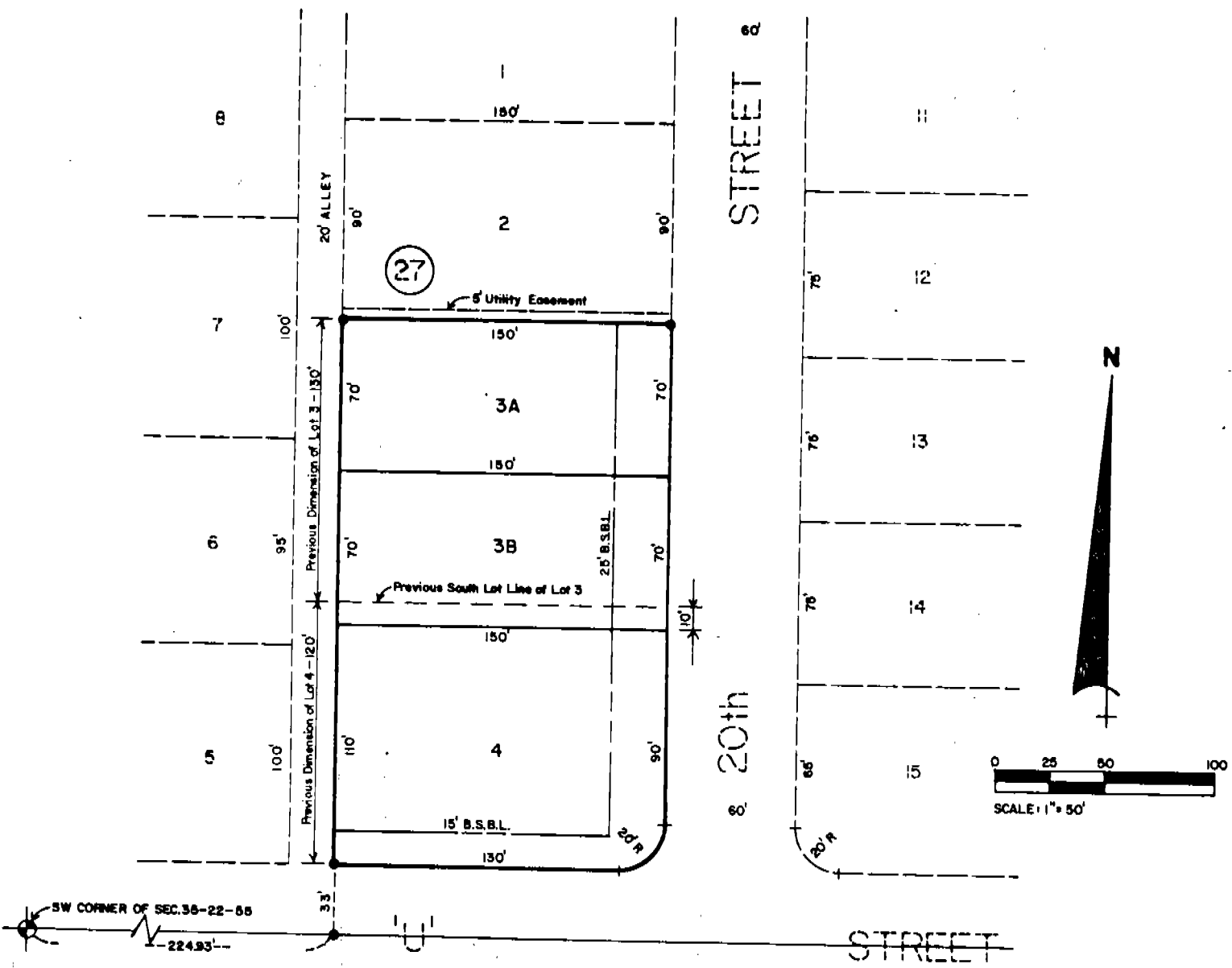


REPLAT

OF LOTS 3 & 4, BLOCK 27 OF NORTHFIELD FIRST ADDITION IN THE CITY OF GERING, NEBRASKA.
LOTS 3A, 3B, & 4.

3568



3/11

REPLAT OF LOTS 3 & 4, BLOCK 27
NORTHFIELD FIRST ADDITION
CITY OF GERING, NEBRASKA
SHEET 2 OF 3

3568

SURVEYOR'S CERTIFICATE

I, Ronald L. Vogel, a competent surveyor of Scotts Bluff County, Nebraska, hereby certify that a survey of Lots Three (3) and Four (4), Block Twenty-seven (27), Northfield First Addition to the City of Gering, Nebraska, has been made under my direction. That I have prepared a replat of such former lots and designated the new lots as Lots 3A, 3B and 4.

That the accompanying plat is a correct delineation of such survey, drawn to a scale of 50 feet to the inch, with all dimensions shown thereon in feet and decimals. That each new lot bears its own letter and that iron rods are driven well into the ground at all corners of the lots. That the boundary of the subdivision is shown on the plat with a heavy solid line and that adjoining lots are shown dashed for orientation purposes.

WITNESS MY HAND AND SEAL this 25th day of August, 1980.



Ronald L. Vogel
RONALD L. VOGEL
Nebraska Registered Land Surveyor
L.S. 266

State of Nebraska, Scotts Bluff County ss.
Entered in Numerical Index and filed for
record the 2 day of September 1980
at 3:15 o'clock P.M., and recorded in
Book 165 of Deeds
on page 741
Mary Jo Ellis
Register of Deeds
By _____ Deputy