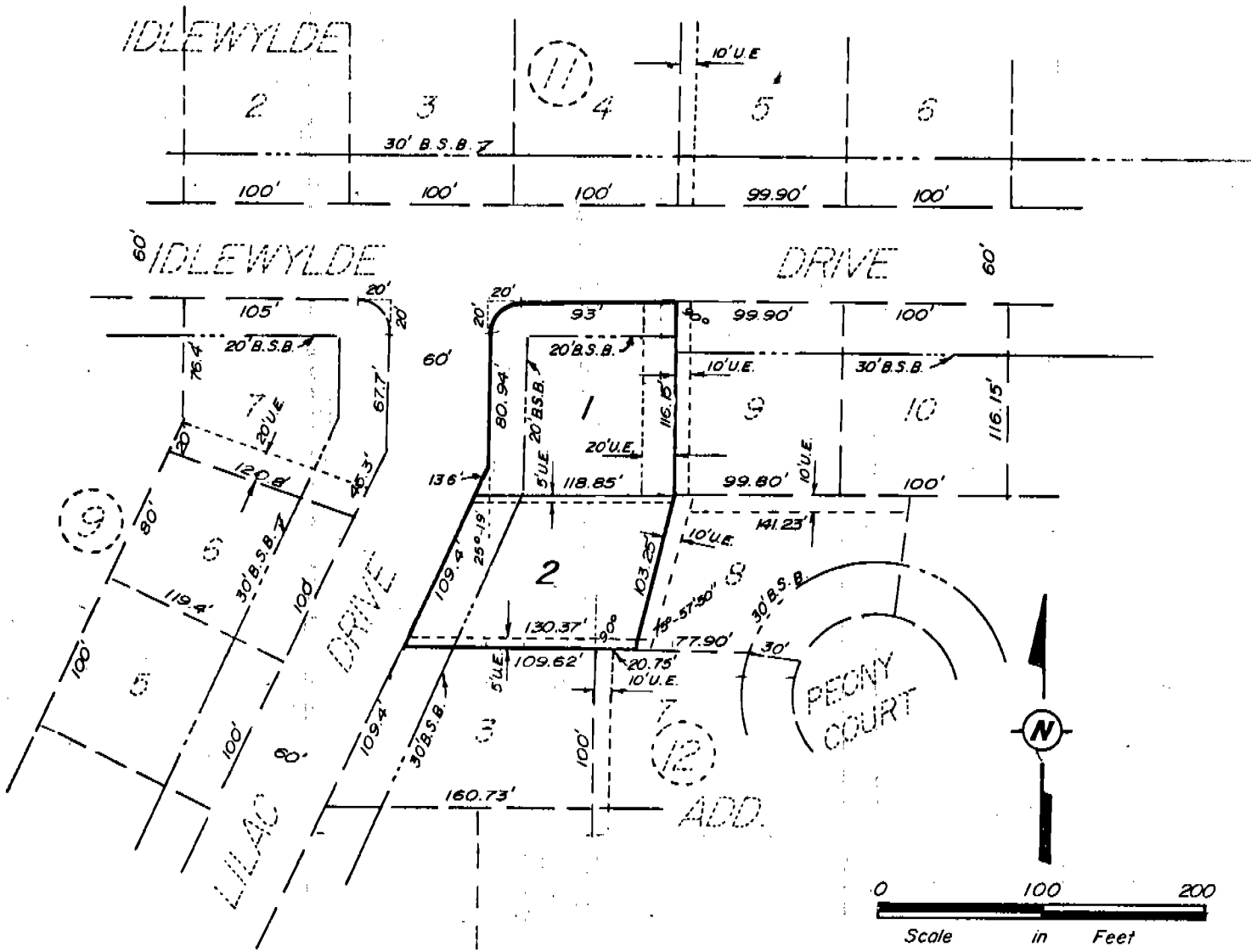


IDLEWYLDE ADDITION REPLAT OF LOTS 1 & 2, BLOCK 12 2478 IN THE CITY OF SCOTTSBLUFF, NEBRASKA



SURVEYOR'S CERTIFICATE

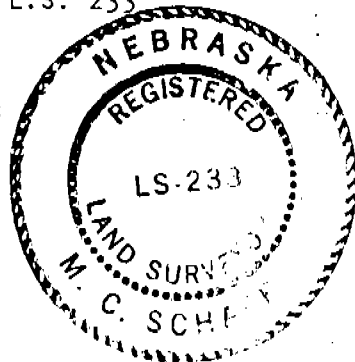
I, M.C. Schaff, a competent surveyor of Scotts Bluff County, Nebraska, hereby certify that I have surveyed Lots 1 and 2, Block 12, Idlewylde Addition in the City of Scottsbluff, Nebraska, according to the recorded plat thereof, and prepared a plat to be known as Idlewylde Addition Replat of Lots 1 and 2, Block 12, in the City of Scottsbluff, Nebraska, and that the accompanying plat is a true delineation of such survey and replat drawn to a scale of 100 feet to the inch, containing an area of 0.59 acres more or less.

That all corners are marked with 3/4" x 18" iron rods. That all dimensions are in feet and decimals and each Lot bears its own number. That the boundary of the survey is shown on the plat with a heavy solid line. That dashed lines shown for adjoining platted and unplatted lands are shown for orientation purposes only.

WITNESS MY HAND AND SEAL this 20th day of April, 19 79.

FOR THE FIRM OF M.C. SCHAFF & ASSOCIATES, INC.

M.C. Schaff
M.C. Schaff, Nebraska Registered
Land Surveyor, L.S. 233



'OWNER'S STATEMENT AND DEDICATION'

I, the undersigned, being the Owner of Lots 1 and 2, Block 12, Idlewylde Addition in the City of Scottsbluff, Nebraska, as described in the foregoing "Surveyor's Certificate" and shown on the accompanying plat, have caused such real estate to be surveyed and platted as IDLEWYLDE ADDITION REPLAT OF LOTS 1 AND 2, BLOCK 12, in the City of Scottsbluff, Nebraska.

The foregoing replat, utility easements and Building Setback Designations shown are made with the free consent and in accordance with the desire of the undersigned owner.

We hereby dedicate the easements shown on the plat to the use and benefit of the public.

DATED this 4th day of May, 19 79.
MAXWELL, INC.
A Nebraska Corporation



Melvin Maxwell
Melvin Maxwell, President

ACKNOWLEDGEMENT

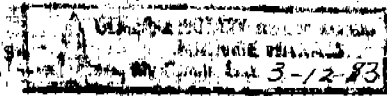
STATE OF NEBRASKA)
SCOTTS BLUFF COUNTY) ss

Before me, a Notary Public, qualified and acting in said County, personally came Melvin Maxwell, President of Maxwell, Inc., a Nebraska Corporation, whose signature is affixed to the foregoing "Owner's Statement" and acknowledged the execution thereof to be his voluntary act and the voluntary act and deed of the Corporation.

WITNESS MY HAND AND NOTARIAL SEAL this 4th day of May, 1979.

Joanne Harris
Notary Public

My Commission expires



APPROVAL AND ACCEPTANCE

The foregoing plat of IDLEWYLDE ADDITION REPLAT OF LOTS 1 and 2, BLOCK 12, in the City of Scottsbluff, Nebraska, hereby approved by the Mayor and City Council by resolution duly passed this 14th day of May, 1979.

David E. Bauman
Mayor

ATTEST:

H. L. Ferguson
City Clerk



State of Nebraska, Scotts Bluff County ss.
Entered in Numerical Index and filed for
record the 18 day of May, 1979
at 2:33 o'clock P. M., and recorded in
Book 162 of Deeds
on page 28
Mary Jo Ellis
Register of Deeds
By _____ Deputy