

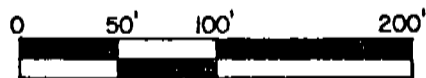
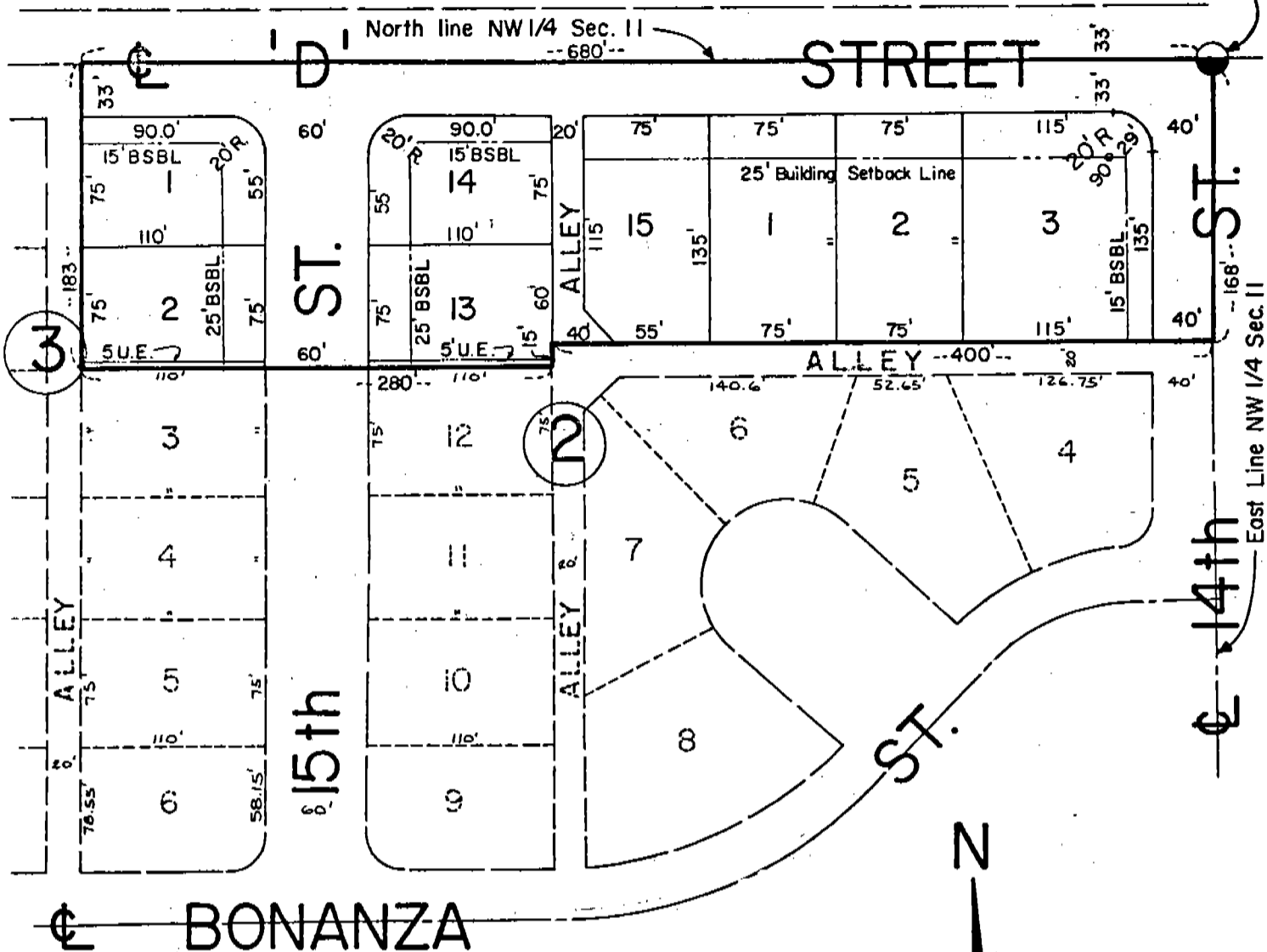
CONESTOGA PARK

317

LOTS 1-3 & 13-15, BLOCK 2 AND LOTS 1 & 2 BLOCK 3, AN ADDITION TO THE CITY OF GERING, NEBRASKA, SITUATED IN THE NW 1/4 OF SEC. 11, T21N, R55W OF 6th P.M., SCOTTS BLUFF COUNTY, NEBRASKA.

NE Corner NW 1/4 Sec. 11
T21N, R55W

North line NW 1/4 Sec. 11
-- 680' --



SCALE: 1" = 100'
2.72 Acres

State of Nebraska, Scotts Bluff County ss.
 Entered in Numerical Index and filed for
 record the 28 day of January, 1979
 at 2:10 o'clock P.M., and recorded in
 Book 161 of Deeds
 on page 116
Mary Jo Kallas
 Register of Deeds
 By City of Gering Deputy

4
116

CONESTOGA PARK

Lots 1-3 & 13-15, Block 2 & Lots 1 & 2, Block 3
 AN ADDITION TO THE CITY OF GERING, NEBRASKA
 SHEET 2 of 4

917

SURVEYOR'S CERTIFICATE

I, Ronald L. Vogel, a competent surveyor of Scotts Bluff County, Nebraska, hereby certify that I have surveyed a part of the Northwest Quarter (NW 1/4) of Section Eleven (11), Township Twenty-one (21) North, Range Fifty-five (55) West of the 6th P.M., Scotts Bluff County, Nebraska, such tract of land being more particularly described as follows:

Beginning at the Northeast corner of such NW 1/4; then South on the East Line of such NW 1/4, a distance of 168.0 feet; then West, parallel to the North Line of such NW 1/4 and on the North side of the alley as platted in Block Two (2), Conestoga Park, a distance of 400.0 feet; then South, parallel to the East Line of such NW 1/4, a distance of 15.0 feet to the Northeast corner of Lot Twelve (12), Block Two (2), Conestoga Park, according to the recorded plat thereof; then West along the North Line of such Lot 12, extended West and on the North Line of Lot Three (3), Block Three (3), Conestoga Park, a distance of 280.0 feet to the Northwest corner of Lot 3, Block 3, Conestoga Park, an Addition to the City of Gering, Nebraska, according to the recorded plat thereof; then North, parallel to the East Line of such NW 1/4, a distance of 183.00 feet to the North Line of such NW 1/4; then East on the North Line of such NW 1/4, a distance of 680.0 feet to the point of beginning, such tract of land containing an area of 2.72 acres, more or less.

That I have further surveyed and subdivided such real estate as above described as Lots One (1) through Three (3), Lots Thirteen (13) through Fifteen (15), Block Two (2) and Lots One (1) and Two (2), Block Three (3), Conestoga Park, an Addition to the City of Gering, Nebraska.

That each lot, block and public way is well and accurately staked and marked with iron rods. That each lot and block bears its own number and that all dimensions are in feet and decimals. That the boundary of the land subdivided is shown on the plat with a heavy solid line and that adjoining subdivided lands are shown dashed for orientation purposes

WITNESS MY HAND AND SEAL this 30th day of July, 1977.



Ronald L. Vogel

RONALD L. VOGEL
 Nebraska Registered Land Surveyor
 L.S. 266
 Scotts Bluff County Surveyor

CONESTOGA PARK
Lots 1-3 & 13-15, Block 2 and Lots 1 & 2, Block 3
AN ADDITION TO THE CITY OF GERING, NEBRASKA
SHEET 4 of 4

917

APPROVAL & ACCEPTANCE

The foregoing plat of "Conestoga Park Addition" to the City of Gering, Nebraska, approved and accepted by the Mayor and City Council of the City of Gering, Nebraska, by Ordinance No. 1091 duly passed this 24th day of April, 1978.

John McEllen
MAYOR

ATTEST: *Richard J. Brown*
CITY CLERK

