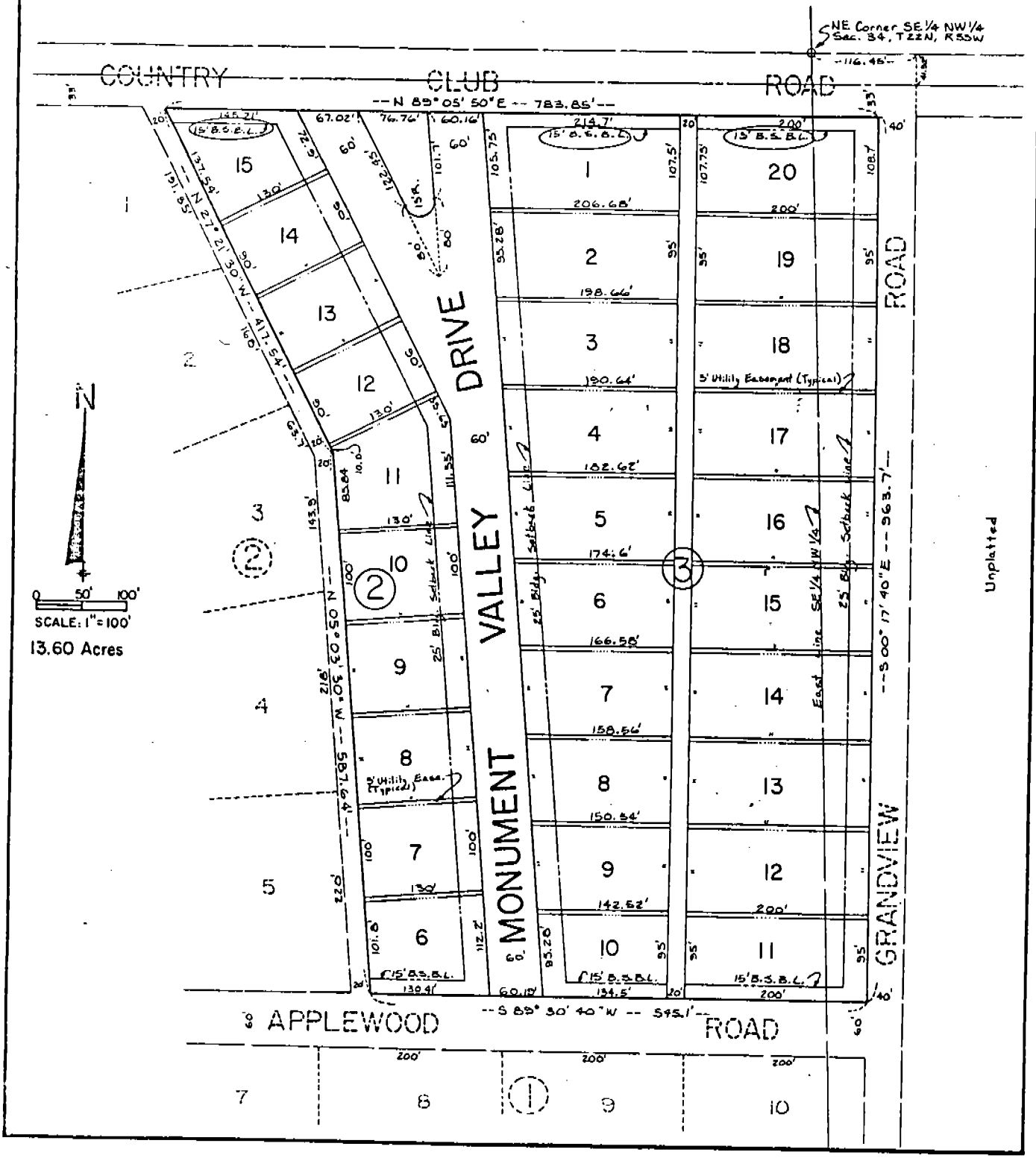


AMENDED OF PLAT 429
 OF
 MONUMENT HEIGHTS
 AN ADDITION IN THE CITY OF GERING, NEBRASKA



2
 653

SURVEYOR'S CERTIFICATE

I, Ronald L. Vogel, a competent surveyor of Scotts Bluff County, Nebraska, hereby certify that I have prepared an Amended Plat of Monument Heights, Lots Six (6) through Fifteen (15), Block Two (2) and Lots One (1) through Twenty (20), Block Three (3), an Addition to the City of Gering, Nebraska, according to the recorded plat thereof.

That the amended plat changed only the building setback line on Lot Fifteen (15), Block Two (2) and Lots One (1) and Twenty (20), Block Three (3), from the original 25.0 foot setback to a 15.0 foot setback.

That the accompanying plat is a true delineation of Monument Heights Addition in the City of Gering, Nebraska.

WITNESS MY HAND AND SEAL this 19th day of January, 1979.

Ronald L. Vogel
RONALD L. VOGEL
Nebraska Registered Land Surveyor
L.S. 266

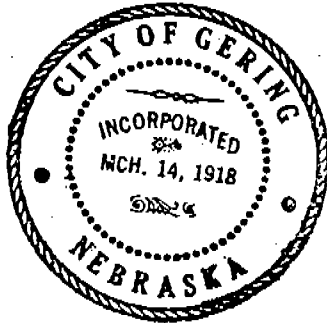


APPROVAL AND ACCEPTANCE

The foregoing Amended Plat of Monument Heights, an Addition in the City of Gering, Nebraska, showing the amended setback lines on Lot 15, Block 2 and Lots 1 and 20, Block 3, approved and accepted by the Mayor and City Council of the City of Gering, Nebraska, by Resolution duly passed this 29th day of January, 1979.

John McDaniel
MAYOR

ATTEST: *Robert J. Stull*
CITY CLERK



NUMERICAL
GENERAL
PICTURED

State of Nebraska, Scotts Bluff County ss.
Entered in Numerical Index and filed for
record the 30 day of January 1979
at 3:00 o'clock P.M., and recorded in
Book 160 of Deeds
on page 653
Mary Jo Ellis
Register of Deeds
By _____ Deputy