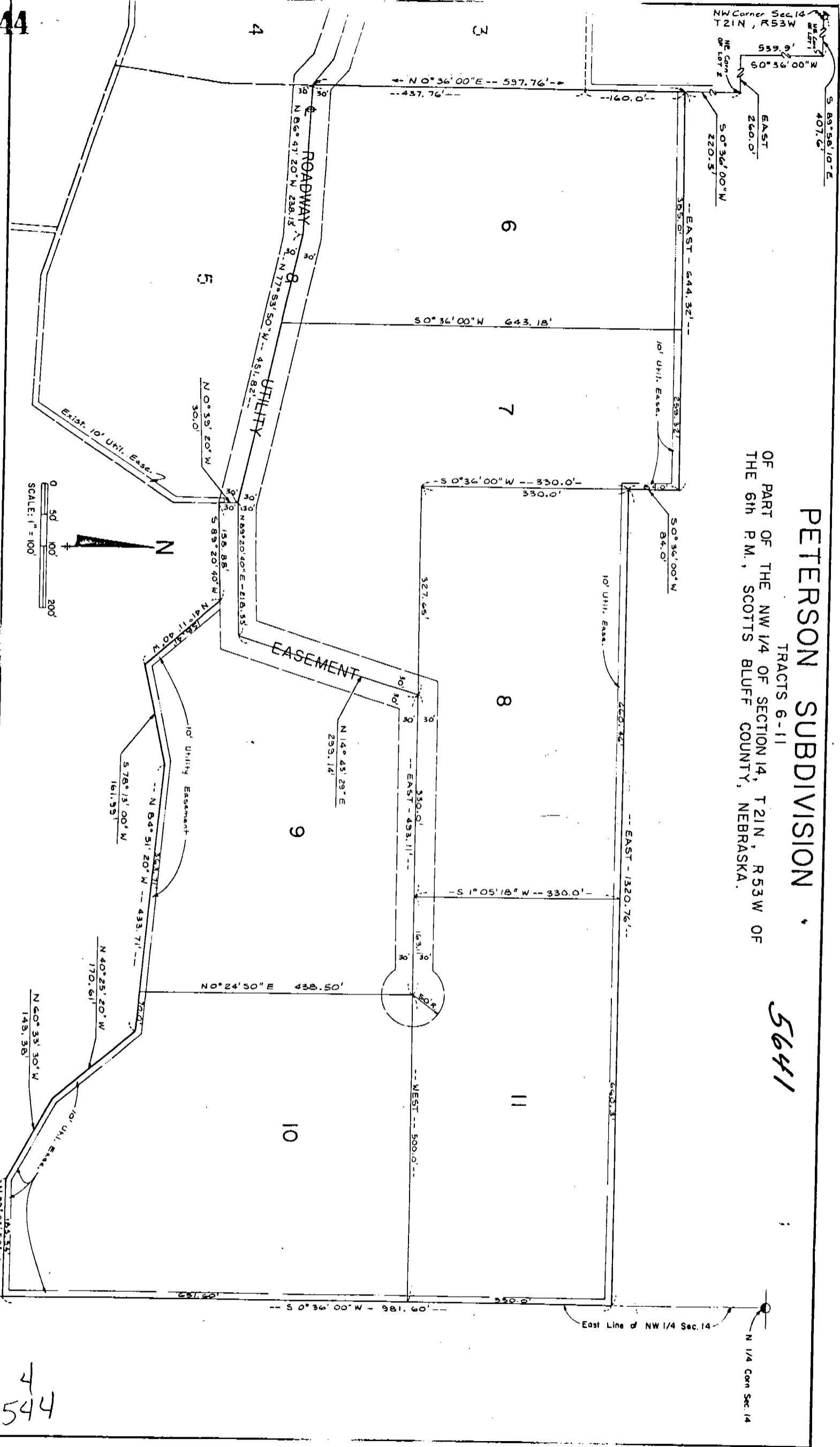


PETERSON SUBDIVISION
 TRACTS 6-11
 OF PART OF THE NW 1/4 OF SECTION 14,
 T21N, R53W OF
 THE 6th P.M., SCOTTS BLUFF COUNTY,
 NEBRASKA.

5641



5641

SURVEYOR'S CERTIFICATE

I, Ronald L. Vogel, a competent surveyor of Scotts Bluff County, Nebraska, hereby certify that I have surveyed a part of the Northwest Quarter (NW $\frac{1}{4}$) of Section Fourteen (14), Township Twenty-one (21) North, Range Fifty-Three (53) West of the 6th P.M., Scotts Bluff County, Nebraska being more particularly described as follows

With reference to the Northwest corner of such Section 14; then South 89 degrees 58 minutes 10 seconds East on the North Line of such Section 14 a distance of 407.6 feet to the Northeast corner of Lot 1, Peterson Subdivision, according to the recorded plat thereof; then South 0 degrees 36 minutes 00 seconds West on the East Line of such Lot 1 a distance of 539.9 feet to the Southeast corner of such Lot 1; then EAST a distance of 260.0 feet to the Northeast corner of Lot 2; then South 0 degrees 36 minutes 00 seconds West on the East Line of such Lot 2 a distance of 220.3 feet to the point of Beginning; then EAST a distance of 644.32 feet; then South 0 degrees 36 minutes 00 seconds West a distance of 84.0 feet; then EAST a distance of 1320.76 feet to a point on the East Line of such NW $\frac{1}{4}$; then South 0 degrees 36 minutes 00 seconds West on the East Line of such NW $\frac{1}{4}$ a distance of 981.60 feet; then North 89 degrees 03 minutes 50 seconds West a distance of 185.94; then North 60 degrees 33 minutes 30 West a distance of 149.38 feet; then North 40 degrees 25 minutes 20 seconds West a distance of 170.61 feet; then North 84 degrees 51 minutes 20 seconds West a distance of 433.71 feet; then South 78 degrees 13 minutes 00 seconds West a distance of 161.99 feet; then North 41 degrees 11 minutes 40 seconds West a distance of 158.41 feet; then South 89 degrees 20 minutes 40 seconds West a distance of 158.88 feet to a point on the East Line of Lot 5, Peterson Subdivision, then North 0 degrees 39 minutes 20 seconds West a distance of 30.0 feet to the Northeast corner of such Lot 5; then along the North Line of such Lot 5, North 77 degrees 53 minutes 50 seconds West a distance of 451.82 feet; then North 86 degrees 47 minutes 20 seconds West a distance of 238.18 feet to the Southeast corner of Lot 3, Peterson Subdivision; then North

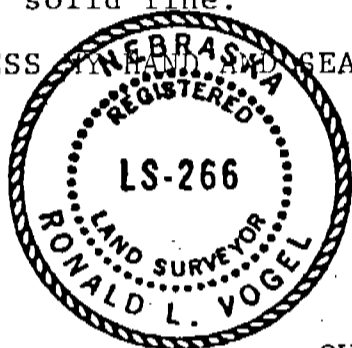
5641

0 degrees 36 minutes 00 seconds East on the East Line of Lot 3 a distance of 597.76 feet to the point of beginning, containing an area of 33.2 acres.

That I have further surveyed and subdivided the land as above described as Peterson Subdivision, Lots 6 through 11, a subdivision of part of the NW $\frac{1}{4}$ of Section 14, Township 21 North, Range 53 West of the 6th P. M., Scotts Bluff County, Nebraska.

That the accompanying plat is a true delineation of such survey and subdivision drawn to a scale of 100 feet to the inch. That all corners are marked with 5/8"x18" iron rods and that all dimensions are in feet and decimals. That each lot bears its own number and that the boundary of the land subdivided is shown on the plat with a heavy solid line.

WITNESS MY HAND AND SEAL this 23 day of August, 1978.



Ronald L. Vogel
RONALD L. VOGEL, NEBRASKA REGISTERED
LAND SURVEYOR LS 266

OWNERS STATEMENT AND DEDICATION

We, the undersigned, being the owners of that part of the NW $\frac{1}{4}$ of Section 14, Township 21 North, Range 53 West of the 6th P. M., Scotts Bluff County, Nebraska, as shown by the accompanying plat and described in the foregoing "Surveyor's Certificate" have caused such land to be surveyed and platted as "Peterson Subdivision", Lots 6 through 11. We hereby dedicate the easements shown on and referred to in the plat to the use and benefit of the public. The above described and foregoing subdivision and the easements are made with the free consent and in accordance with desires of the undersigned owners.

Dated this 23rd day of August, 1978.

Hoyt I. Peterson
Hoyt I. Peterson

Bulah M. Peterson
Bulah M. Peterson

5641

ACKNOWLEDGEMENT

STATE OF NEBRASKA)
SCOTTS BLUFF COUNTY) ^{ss}

Before me, a Notary Public, qualified in such County, personally came Hoyt I. Peterson and Bulah M. Peterson, husband and wife, to me known to be the identical persons who signed the foregoing "OWNERS STATEMENT AND DEDICATION" and acknowledged the execution thereof to be their voluntary act and deed.

WITNESS MY HAND AND NOTARIAL SEAL this 23rd day of August, 1978.

Barbara A. Vogel
NOTARY PUBLIC
GENERAL NOTARY - State of Nebraska
BARBARA A. VOGEL
My Comm. Exp. May 17, 1982

My commission expires

APPROVAL AND ACCEPTANCE

The foregoing plat of Peterson Subdivision approved and accepted by the Chairman and County Board of Scotts Bluff County by resolution duly passed this 5th day of September, 1978.

ATTEST



Mayorie K. Stellan
COUNTY CLERK
Deputy

Erud A. Johnson
CHAIRMAN

NUMERICAL INDEX FILED

State of Nebraska, Scotts Bluff County ss.
Entered in Numerical Index and filed for record the 10 day of October, 1978
at 1:50 o'clock P.M., and recorded in Book 159 of Deeds
on page 544
Mary J. Ellis
Register of Deeds
By *Opal J. Clark* Deputy