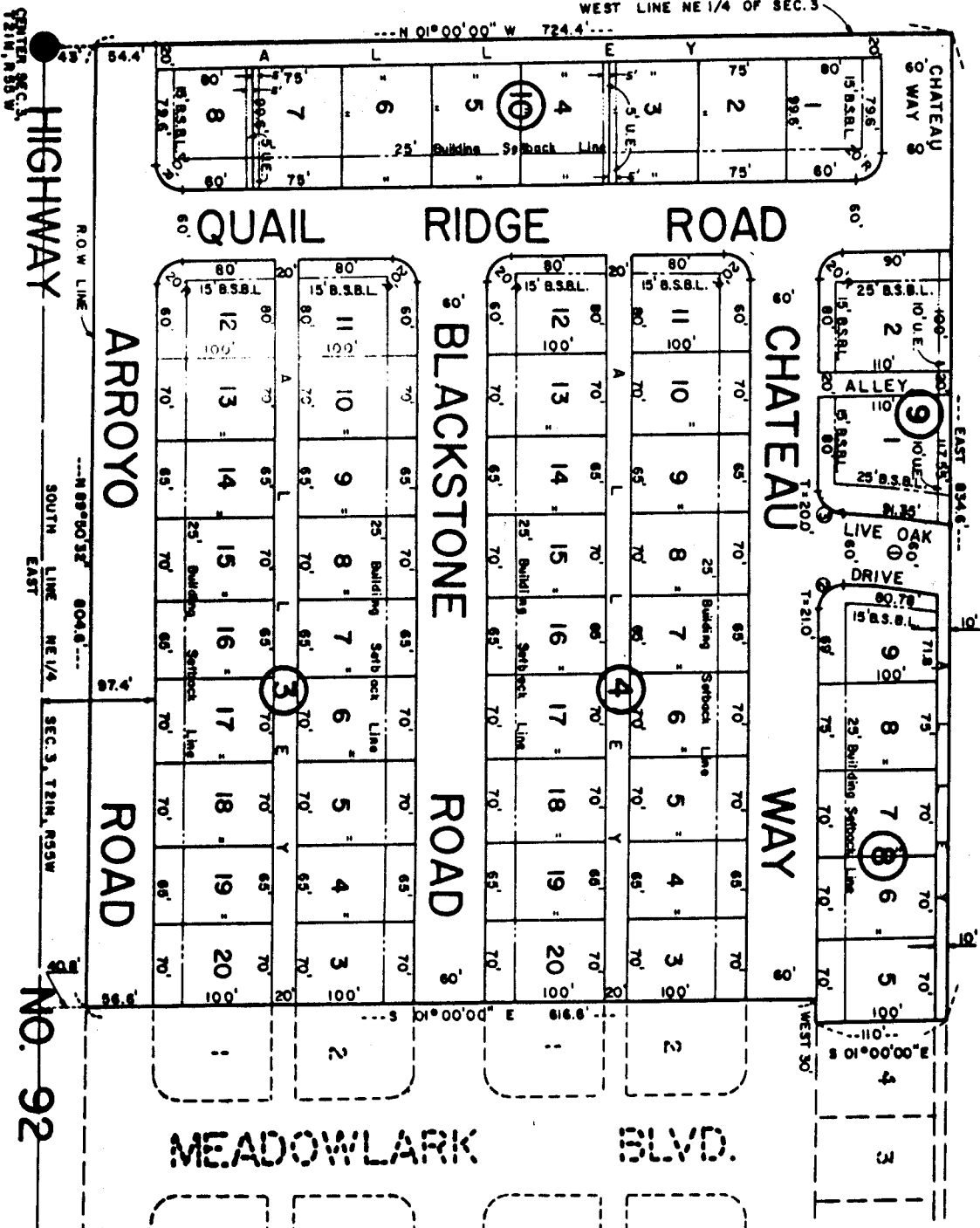


# THE MEADOWS

708

LOTS 3 THRU 20, BLOCK 3, LOTS 3 THRU 20, BLOCK 4, LOTS 5 THRU 9, BLOCK 8, LOTS 1 THRU 2, BLOCK 9, LOTS 1 THRU 8, BLOCK 10, AN ADDITION TO THE CITY OF GERING, NEBRASKA, SITUATED ON PART OF THE NE 1/4 SEC. 3, T21N, R55W OF THE 6th P.M., SCOTTS BLUFF COUNTY, NEBRASKA



SCALE 1"=100'  
13.4 ACRES

CURVE DATA  
 1 R=208.23'  
 Δ=26°00'00"  
 2 R=20.64'  
 Δ=91°00'00"  
 3 R=20.35'  
 Δ=89°00'00"

LEGEND:  
 U.E.—UTILITY EASEMENT



3/96

7

SURVEYOR'S CERTIFICATE

708

I, Ronald L. Vogel, a competent surveyor of Scotts Bluff County, Nebraska, hereby certify that I have surveyed a tract of land situated in the South Half of the Northeast Quarter (S 1/2 NE 1/4) of Section Three (3), Township Twenty-one (21) North, Range Fifty-five (55) West of the 6th P.M., Scotts Bluff County, Nebraska, such tract of land being more particularly described as follows:

With reference to the Southwest corner of such NE 1/4; then North 01°-00'-00" West on the West Line of such NE 1/4, a distance of 43.0 feet to the true point of beginning; then continuing North on such line, a distance of 724.40 feet; then EAST, a distance of 834.6 feet; then South 01°-00'-00" East on the Northerly extension of Lot Four (4), Block Eight (8), The Meadows, an Addition to the City of Gering, Nebraska, according to the recorded plat thereof, a distance of 110.0 feet to the Southeast corner of such Lot 4; then WEST on the North Line of Chateau Way, a distance of 30.0 feet; then South 01°-00'-00" East, a distance of 616.6 feet to the Northerly Right-of-Way Line of State Highway No. 92; then North 89°-50'-32" West on such Right-of-Way, a distance of 804.6 feet to the true point of beginning, containing an area of 13.47 acres, more or less.

That I have further surveyed and subdivided such land as above described as "The Meadows", Lots Three (3) through Twenty (20), Block Three (3); Lots Three (3) through Twenty (20), Block Four (4); Lots Five (5) through Nine (9), Block Eight (8); Lots One (1) and Two (2), Block Nine (9); Lots One (1) through Eight (8), Block Ten (10), including streets, avenues, alleys therein, an Addition to the City of Gering, Nebraska.

That the accompanying plat is a true delineation of such survey and subdivision, drawn to a scale of 100 feet to the inch. That all corners are marked with iron rods and that all dimensions are in feet and decimals. That each lot and block bears its own number and that the boundary of the land subdivided is shown on the plat with a heavy solid line.

WITNESS MY HAND AND SEAL this 4th day of January, 1978.



*Ronald L. Vogel*

RONALD L. VOGEL  
Nebraska Registered Land Surveyor  
L.S. 266

The Meadows  
City of Gering, Nebraska  
Continuation Sheet 3 of 3

DEDICATION & ANNEXATION

708

The undersigned, being the owners of that part of the South Half of the Northeast Quarter (S 1/2 NE 1/4) of Section Three (3), Township Twenty-one (21) North, Range Fifty-five (55) West of the 6th P.M., Scotts Bluff County, Nebraska, as described in the foregoing "Surveyor's Certificate" and shown by the accompanying plat, have caused such real estate to be surveyed and platted as "The Meadows", Lots 3-20, Block 3; Lots 3-20, Block 4; Lots 5-9, Block 8; Lots 1 & 2, Block 9; Lots 1-8, Block 10, an Addition to the City of Gering, Nebraska.

We hereby dedicate the streets, avenues, alleys, ways and roads shown on and referred to in the plat to the use and benefit of the public and further annex and make such real estate a part of the City of Gering, Nebraska.

The above described and foregoing subdivision, with the streets, avenues, ways, roads and easements is made with the free consent and in accordance with the desires of the undersigned owners.

Dated this 6<sup>th</sup> day of January, 1978.

*Jonathan E. Hegwood*  
Jonathan E. Hegwood

*William P. Johannes*  
William P. Johannes

*Norma E. Hegwood*  
Norma E. Hegwood

*Hannah Johannes*  
Hannah Johannes

ACKNOWLEDGEMENT

STATE OF NEBRASKA )  
SCOTTS BLUFF COUNTY ) ss.

Before me, a Notary Public, qualified in such County, personally came Jonathan E. Hegwood and Norma E. Hegwood, Husband and Wife and William P. Johannes and Hannah Johannes, Husband and Wife, to me known to be the identical persons who signed the foregoing "Dedication and Annexation" and acknowledged the execution thereof to be their voluntary act and deed.

WITNESS MY HAND AND NOTARIAL SEAL this 6<sup>th</sup> day of January, 1978.

 **BARBARA A. VOGEL**  
General Notary-State of Nebr.  
My Commission Expires  
May 17, 1978  
*Barbara A. Vogel*  
Notary Public

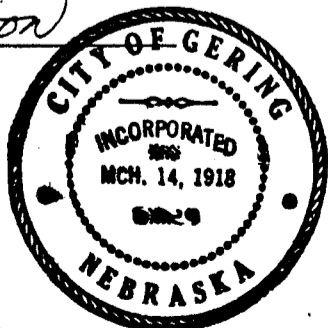
My Commission expires: \_\_\_\_\_

APPROVAL AND ACCEPTANCE

The foregoing plat of "The Meadows", an Addition to the City of Gering, Nebraska, approved and accepted by the Mayor and City Council of the City of Gering, Nebraska, by Ordinance No. 1072 duly passed this 9<sup>th</sup> day of January, 1978.

ATTEST: *Richard H. Brown*  
City Clerk

*John McFadden*  
MAYOR



COMMERCIAL  
GENERAL  
PICTURED

State of Nebraska, Scotts Bluff County ss.  
Entered in Numerical Index and filed for  
record the 14 day of February 19 78  
at 10:01 o'clock A.M., and recorded in  
Book 157 of Deeds  
on page 96  
*Mary Jo Kellie*  
Register of Deeds  
By \_\_\_\_\_ Deputy