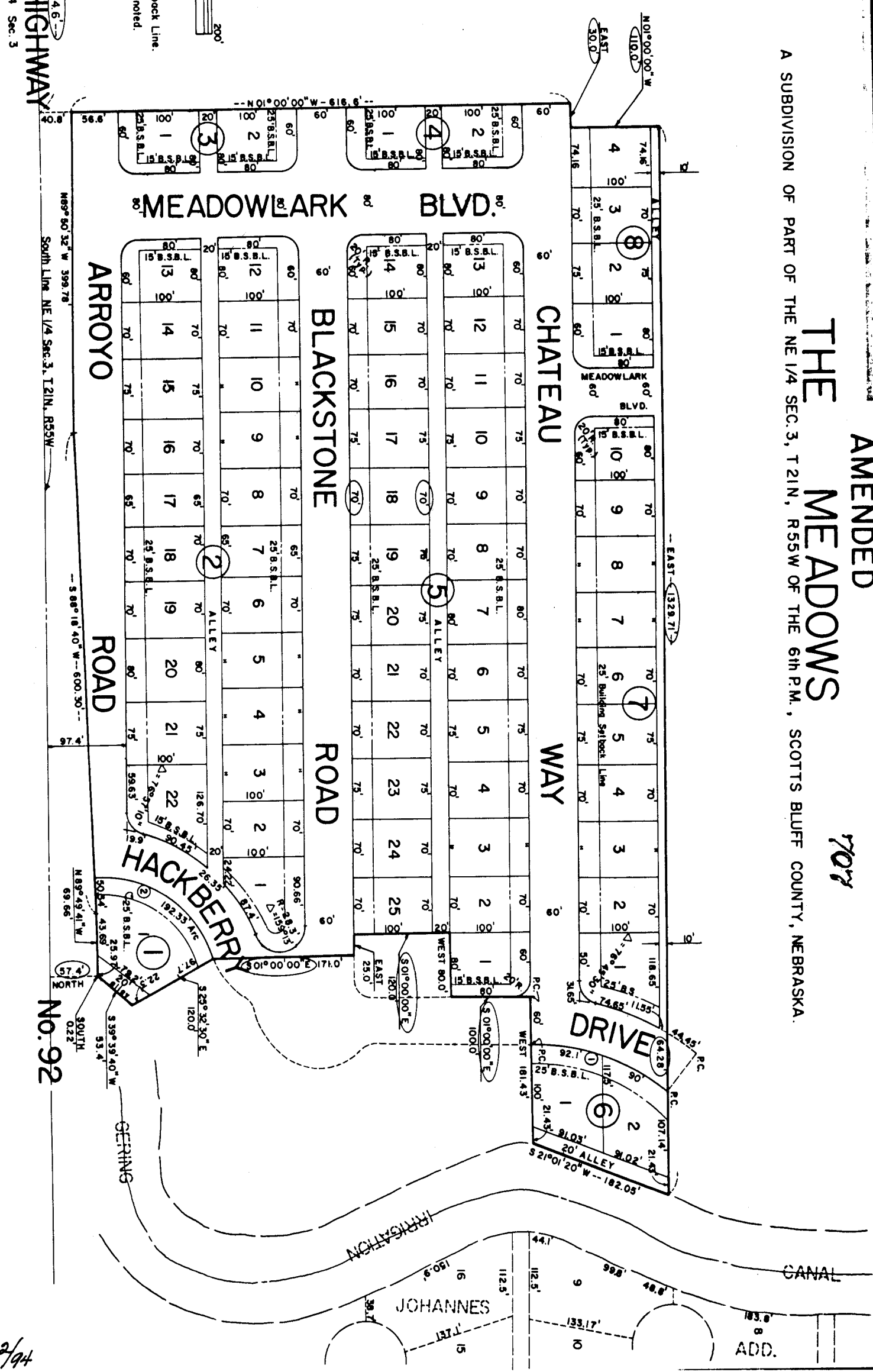


AMENDED
THE MEADOWS
 FOR

A SUBDIVISION OF PART OF THE NE 1/4 SEC. 3, T21N, R55W OF THE 6th P.M., SCOTTS BLUFF COUNTY, NEBRASKA.



NOTE: INDICATES INFORMATION AS CORRECTED

GRAPHIC SCALE
 19.7 Acres
 B.S.B.L. - Building Setback Line.
 Radii are 200' unless noted.
 CURVE DATA:
 ① R = 277.43'
 Δ = 37°46'20"
 ② R = 159.94'
 Δ = 68°55'20"
 SW Corner NE 1/4 Sec. 3
HIGHWAY No. 92

2/94

707

SURVEYOR'S CERTIFICATE

I, Ronald L. Vogel, a competent surveyor of Scotts Bluff County, Nebraska, hereby certify that I have surveyed The Meadows, Lot One (1), Block One (1), Lots One (1) through Twenty-two (22), Block Two (2), Lots One (1) and Two (2), Block Three (3), Lots One (1) and Two (2), Block Four (4), Lots One (1) through Twenty-five (25), Block Five (5), Lots One (1) and Two (2), Block Six (6), Lots One (1) through Ten (10), Block Seven (7) and Lots One (1) through Four (4), Block Eight (8), an Addition to the City of Gering, Nebraska.

That the accompanying amended plat has been prepared in order to correct certain discrepancies that exist on the original plat of The Meadows and that where corrections are necessary, they are indicated as shown in the legend.

WITNESS MY HAND AND SEAL this 6th day of February, 1978.



Ronald L. Vogel

RONALD L. VOGEL
Nebraska Registered Land Surveyor
L.S. 266

NUMERICAL
GENERAL
PICTURED

State of Nebraska, Scotts Bluff County ss.
Entered in Numerical Index and filed for
record the 14 day of February 1978
at 10:00 o'clock A.M., and recorded in
Book 157 of Deeds
on page 94
Mary Jo Kallis
Register of Deeds
By _____ Deputy