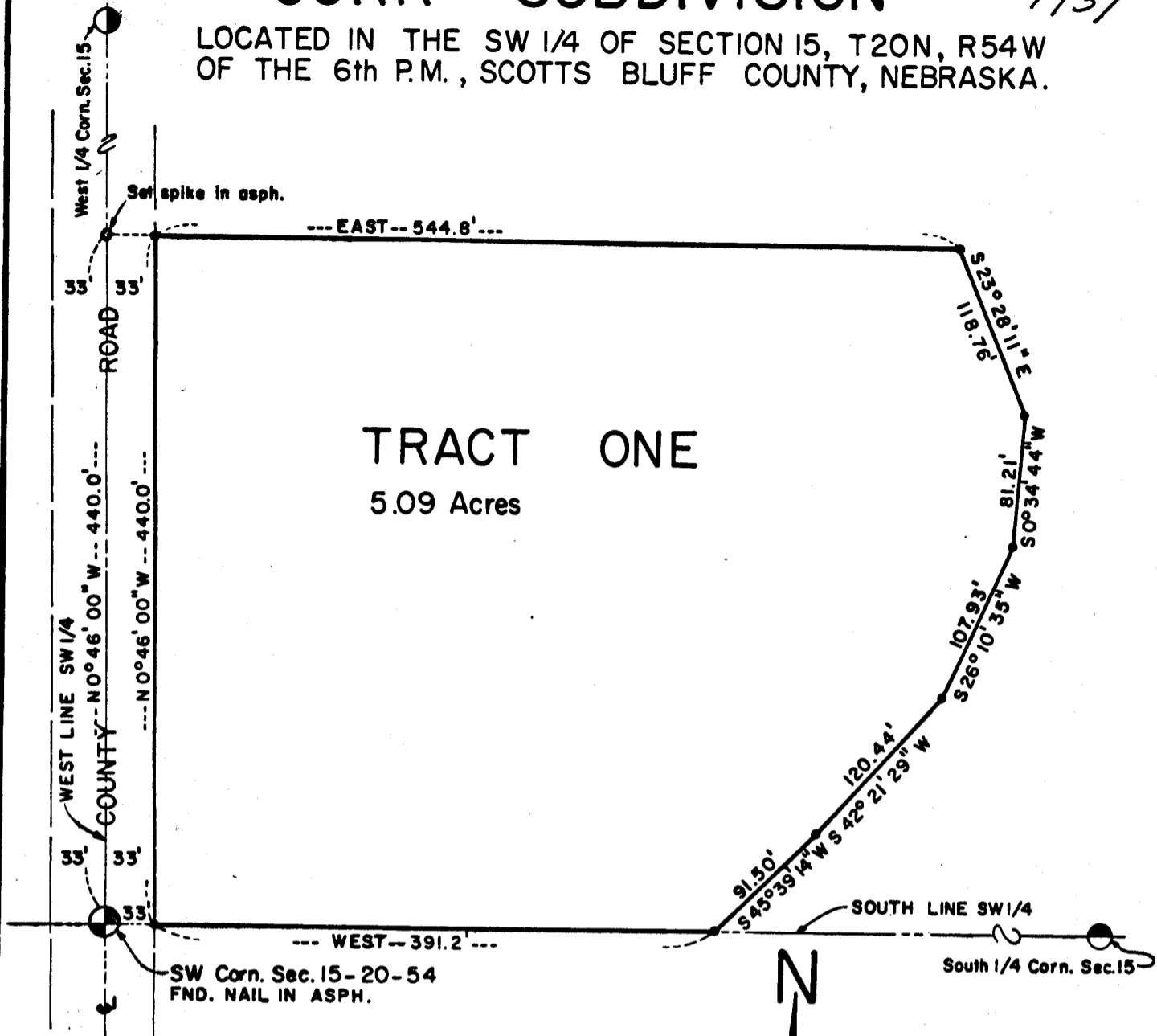


# CORR SUBDIVISION

1937

LOCATED IN THE SW 1/4 OF SECTION 15, T20N, R54W  
OF THE 6th P.M., SCOTTS BLUFF COUNTY, NEBRASKA.



**TRACT ONE**  
5.09 Acres

### SURVEYOR'S CERTIFICATE

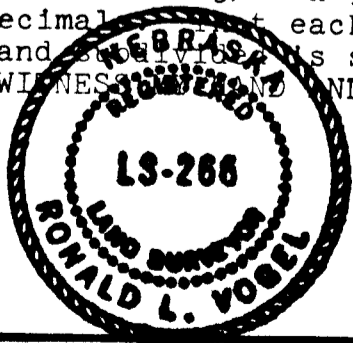
I, Ronald L. Vogel, a competent surveyor of Scotts Bluff County, Nebraska, hereby certify that a survey was made under my direction of part of the Southwest Quarter (SW 1/4) of Section Fifteen (15), Township Twenty (20) North, Range Fifty-four (54) West of the 6th P.M., Scotts Bluff County, Nebraska, being more particularly described as follows:

With reference to the Southwest corner of such Section 15; then EAST, a distance of 33.0 feet to the point of beginning; then North 0°-46'-00" West, parallel to the West Line of such SW 1/4, a distance of 440.0 feet; then EAST, a distance of 544.8 feet; then South 23°-28'-11" East, a distance of 118.76 feet; then South 0°-34'-44" West, a distance of 81.21 feet; then South 26°-10'-35" West, a distance of 107.93 feet; then South 42°-21'-29" West, a distance of 120.44 feet; then South 45°-39'-14" West, a distance of 91.50 feet to a point on the South Line of such SW 1/4; then WEST, a distance of 391.2 feet to the point of beginning, containing an area of 5.09 acres.

That I have further surveyed and subdivided the land as above described as "Corr Subdivision, Tract One (1)".

That the accompanying plat is a true delineation of such survey and subdivision, drawn to a scale of 100 feet to the inch. That all corners are marked with 3/4" x 30" iron rods and that all dimensions are in feet and decimals. That each tract bears its own number. That the boundary of the land is shown on the plat with a heavy solid line.

WITNESSED AND SEAL this 2nd day of March, 1978.



*Ronald L. Vogel*

RONALD L. VOGEL  
Nebraska Registered Land Surveyor  
L.S. 266, Scotts Bluff County Surveyor



SCALE: 1" = 100'

LEGEND:

• SET 5/8" x 18" rebar



CORR SUBDIVISION  
Scotts Bluff County, Nebraska  
Continuation Sheet 2 of 2

1937

OWNER'S STATEMENT

The undersigned, being the owners of that part of the Southwest Quarter (SW 1/4) of Section Fifteen (15), Township Twenty (20) North, Range Fifty-four (54) West of the 6th P.M., Scotts Bluff County, Nebraska, as described in the foregoing "Surveyor's Certificate" and shown by the accompanying plat, have caused such real estate to be surveyed and platted as "Corr Subdivision, Tract One (1)".

The above described and foregoing subdivision is made with the free consent and in accordance with the desires of the undersigned owners.

Dated this 14<sup>th</sup> day of March, 1978.

*E. L. Corr*

E. L. Corr

*Jane Corr*

Jane Corr

ACKNOWLEDGEMENT


STATE OF NEBRASKA )  
COUNTY OF SCOTTS BLUFF )

Before me, a Notary Public, qualified in such County, personally came E. L. Corr and Jane Corr, Husband and Wife, to me known to be the identical persons who signed the foregoing "Owner's Statement" and acknowledged the execution thereof to be their voluntary act and deed.

WITNESS MY HAND AND NOTARIAL SEAL this 14<sup>th</sup> day of March, 1978.

*Barbara A. Vogel*

BARBARA A. VOGEL Notary Public  
General Notary-State of Nebr.  
My Commission Expires  
May 17, 1978

My Commission expires: 

APPROVAL AND ACCEPTANCE

The foregoing plat of "Corr Subdivision", approved and accepted by the Chairman and County Board of Scotts Bluff County, Nebraska, by Resolution duly passed this 31<sup>st</sup> day of ~~March~~ <sup>April</sup>, 1978.

*Fred A. Johnson*  
CHAIRMAN OF THE BOARD

ATTEST:

*Mae J. Farrell*  
County Clerk



State of Nebraska, Scotts Bluff County ss.  
Entered in Numerical Index and filed for  
record the 12 day of April, 1978  
at 1:52 o'clock P. M., and recorded in  
Book 157 of Deeds  
on page 578  
*Mary Jo Ellis*  
Register of Deeds  
By \_\_\_\_\_ Deputy

NOTARIAL  
SEAL  
FEBRUARY