

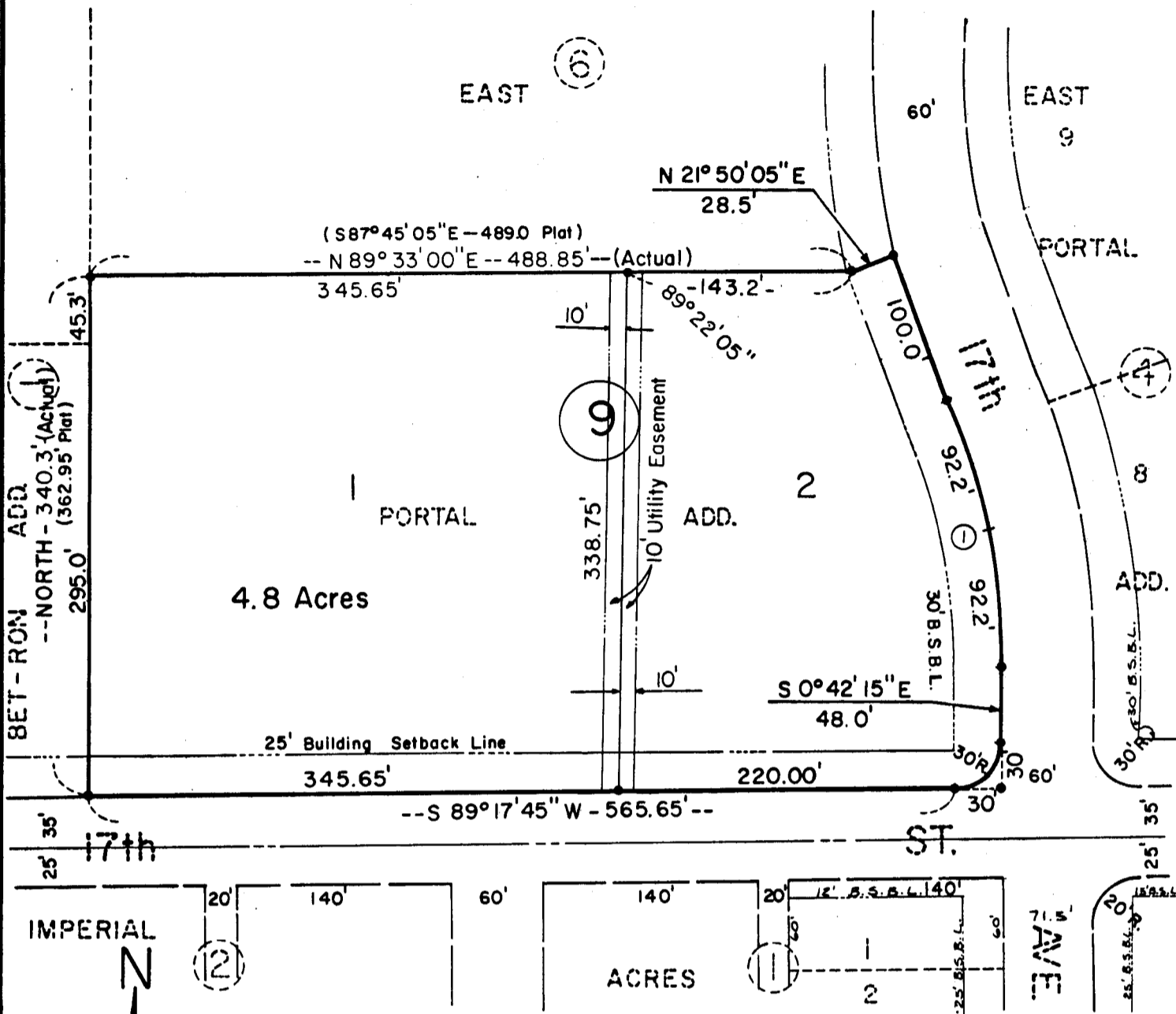
576

SUBDIVISION OF BLOCK 9

1935

EAST PORTAL ADDITION IN THE CITY OF SCOTTSBLUFF, SCOTTS BLUFF COUNTY, NEBRASKA.

LOTS 1 & 2



SURVEYOR'S CERTIFICATE

I, Ronald L. Vogel, a competent surveyor of Scotts Bluff County, Nebraska, hereby certify that I have surveyed Block Nine (9), East Portal Addition to the City of Scottsbluff, Nebraska, according to the recorded plat thereof, and have further surveyed and platted such Block 9 as "Subdivision of Block 9, Lots One (1) and Two (2), East Portal Addition in the City of Scottsbluff, Nebraska.

That the above plat is a true delineation of such survey and subdivision, drawn to a scale of 100 feet to the inch. That all corners are marked with iron rods and that all dimensions are in feet and decimals.

That each new lot bears its own number and that the boundary of the land subdivided is shown on the plat with a heavy solid line and that adjoining subdivided lands are shown dashed for orientation purposes.

WITNESSED MY HAND AND SEAL this 6th day of April, 1978.



Ronald L. Vogel

RONALD L. VOGEL
Nebraska Registered Land Surveyor
L.S. 266

