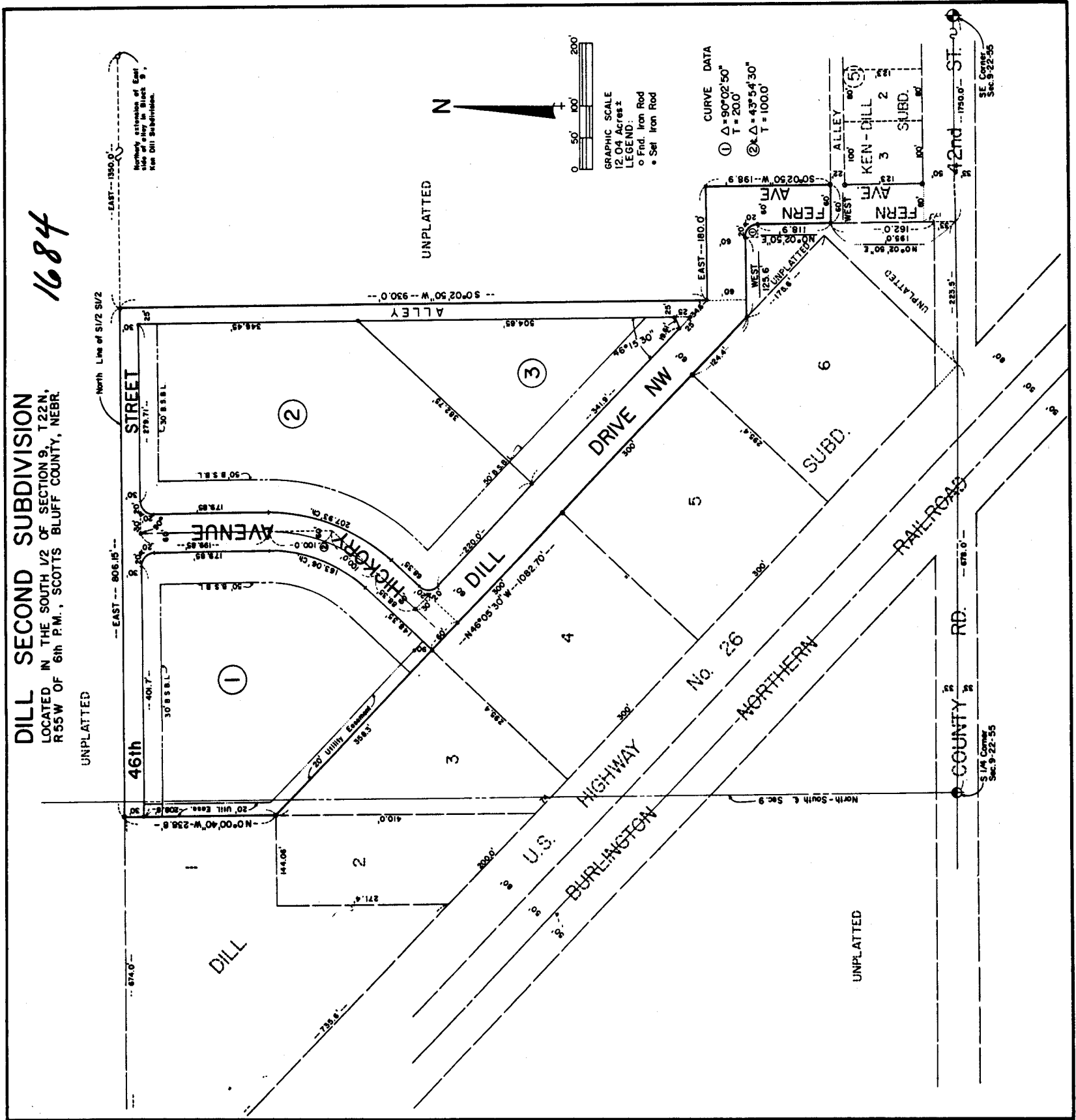


DILL SECOND SUBDIVISION
LOCATED IN THE SOUTH 1/2 OF SECTION 9, T22N,
R55W OF 6th P.M., SCOTTS BLUFF COUNTY, NEBR.

1684



3
420

SURVEYOR'S CERTIFICATE

I, Ronald L. Vogel, a competent surveyor of Scotts Bluff County, Nebraska, do hereby certify that I have surveyed an irregular tract of land situated in the South Half of the South Half (S 1/2 S 1/2) of Section Nine (9), Township Twenty-two (22) North, Range Fifty-five (55) West of the Sixth Principal Meridian in Scotts Bluff County, Nebraska, lying North and East of Dill Subdivision in Scotts Bluff County, Nebraska, according to the recorded plat thereof, more particularly described as follows:

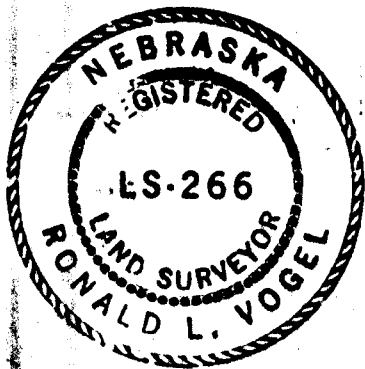
With reference to a point on the Southwest corner of Lot 3, Block 5, KEN-DILL SUBDIVISION in the County of Scotts Bluff, Nebraska, according to the recorded plat thereof; thence West on the Westerly extension of the South Line of such Lot 3, a distance of 60.0 feet; thence North and parallel to the West Line of such Lot 3 extended, a distance of 145.0 feet to the point of beginning; thence continuing North on the last described line, extended North, a distance of 118.9 feet to the P.C. of a 20.0 foot radius curve to the left whose Delta is $90^{\circ}-02'-50''$; thence along such curve to the left, a distance of 31.42 feet to the P.T. of such curve; thence WEST, a distance of 125.6 feet to intersect the Northeast Line of Tract 6, Dill Subdivision, according to the recorded plat thereof; thence North $46^{\circ}-05'-30''$ West on such Northeast Line of such Tract 6, a distance of 124.4 feet to the Northernmost corner of such Tract 6; thence continuing Northwesterly on the Northeast Line of Dill Subdivision, Tracts 5, 4 and 3, to the East Line of Tract 1 of such Dill Subdivision; thence North on the East Line of such Tract 1, a distance of 238.8 feet to the Northeast corner of such Tract 1, such line also being the North Line of the aforementioned South Half of the South Half (S 1/2 S 1/2) of Section 9; thence EAST, a distance of 806.15 feet; thence South $0^{\circ}-02'-50''$ West, a distance of 930 feet; thence EAST, a distance of 180.0 feet; thence South $0^{\circ}-02'-50''$ West, a distance of 198.9 feet to a point 22.0 feet North of the Northwest corner of Lot 3, Block 5, Ken-Dill Subdivision as aforementioned; thence WEST, a distance of 60.0 feet to the point of beginning, such point of beginning being 1750.0 feet West of and 195.0 feet North of the Southeast corner of such Section 9, containing an area of 12.04 acres, more or less.

That I have prepared a plat of such survey and land subdivision to be known as "DILL SECOND SUBDIVISION", Blocks 1, 2 and 3 with Streets, Drives, Alleys and Avenues shown adjoining thereto.

That the accompanying plat is a true delineation of such survey, drawn to a scale of 100 feet to one inch and that all dimensions are shown in feet and decimals. That each Block bears its own number. That Block corners and the corner boundaries of the subdivision are marked with $5/8$ " x $3/8$ " iron rods driven well into the ground. That the boundary of the subdivision is shown on the accompanying plat in a heavy solid line and that adjoining platted lands are shown with dashed lines for orientation purposes only.

WITNESS MY HAND AND SEAL this 7th day of December, 1977.

Ronald L. Vogel
RONALD L. VOGEL
Nebraska Registered Land Surveyor
L.S. 266



181

