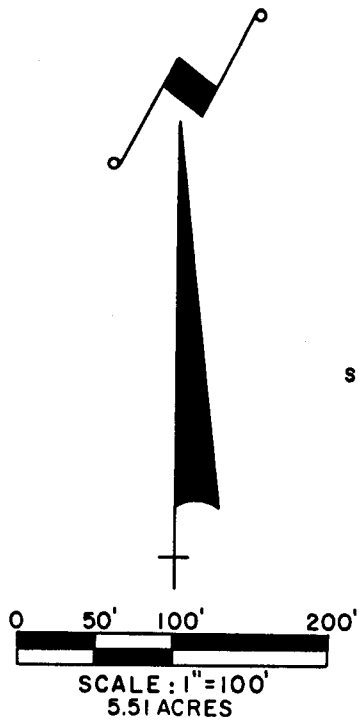
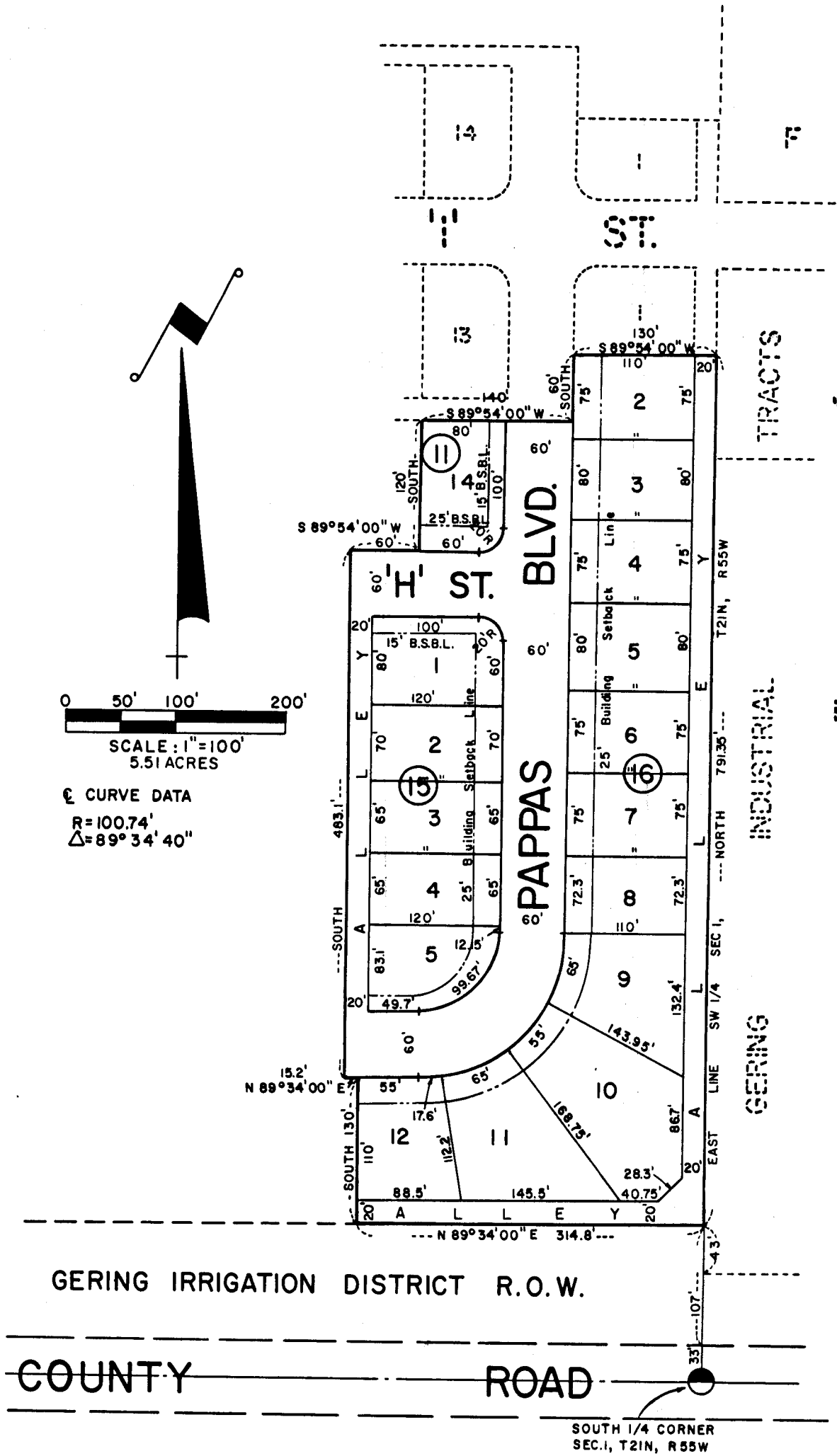


LOT 14, BLOCK II, LOTS 1 THRU 5, BLOCK 15, LOTS 2 THRU 12, BLOCK 16, AN ADDITION TO THE CITY OF GERING, NEBRASKA, SITUATED ON PART OF THE SE 1/4 SW 1/4, SEC. 1, T21N, R55 W OF THE 6th P.M., SCOTTS BLUFF COUNTY, NEBRASKA



☉ CURVE DATA
R=100.74'
Δ=89°34'40"



SURVEYOR'S CERTIFICATE

I, Ronald L. Vogel, a competent surveyor of Scotts Bluff County, Nebraska, hereby certify that I have surveyed a tract of land situated in the Southeast Quarter of the Southwest Quarter (SE 1/4 SW 1/4) of Section One (1), Township Twenty-one (21) North, Range Fifty-five (55) West, of the 6th P.M., Scotts Bluff County, Nebraska. The boundary of such tract is more particularly described as follows:

With reference to the Southeast corner of such SE 1/4 SW 1/4 of Section 1; then North on the East Line of such SE 1/4 SW 1/4, a distance of 140.0 feet to the true point of beginning; then continuing North on such line, a distance of 791.35 feet; then South 89°-54'-00" West on an Easterly extension of the South Line of Lot One (1), Block Sixteen (16), Pappas Addition, an Addition to the City of Gering, Nebraska, according to the recorded plat thereof, a distance of 130.0 feet to the Southwest corner of such Lot 1; then South on the East Line of Pappas Blvd., a distance of 60.0 feet; then South 89°-54'-00" West, a distance of 140.0 feet; then South, a distance of 120.0 feet; then South 89°-54'-00" West, a distance of 60.0 feet; then South, a distance of 483.1 feet; then North 89°-34'-00" East, a distance of 15.2 feet; then South, a distance of 130.0 feet to the Northerly Right-of-Way Line of Gering Irrigation District; then North 89°-34'-00" East on the North Right-of-Way Line of Gering Irrigation District, a distance of 314.8 feet to the true point of beginning, containing an area of 5.51 acres, more or less.

That I have further surveyed and subdivided such land as above described as "Pappas Addition", Lot Fourteen (14), Block Eleven (11); Lots One (1) through Five (5), Block Fifteen (15); Lots Two (2) through Twelve (12), Block Sixteen (16); including streets, avenues and alleys therein.

That the accompanying plat is a true delineation of such survey and subdivision, drawn to a scale of 100 feet to the inch. That all corners are marked with 3/4" x 18" iron rods and that all dimensions are in feet and decimals. That each lot and block bears its own number and that the boundary of the land subdivided is shown on the plat with a heavy solid line and that adjoining lands are shown dashed for orientation purposes.

WITNESS MY HAND AND SEAL this 5th day of January, 1978.



Ronald L. Vogel
 RONALD L. VOGEL
 Nebraska Registered Land Surveyor
 L.S. 266

