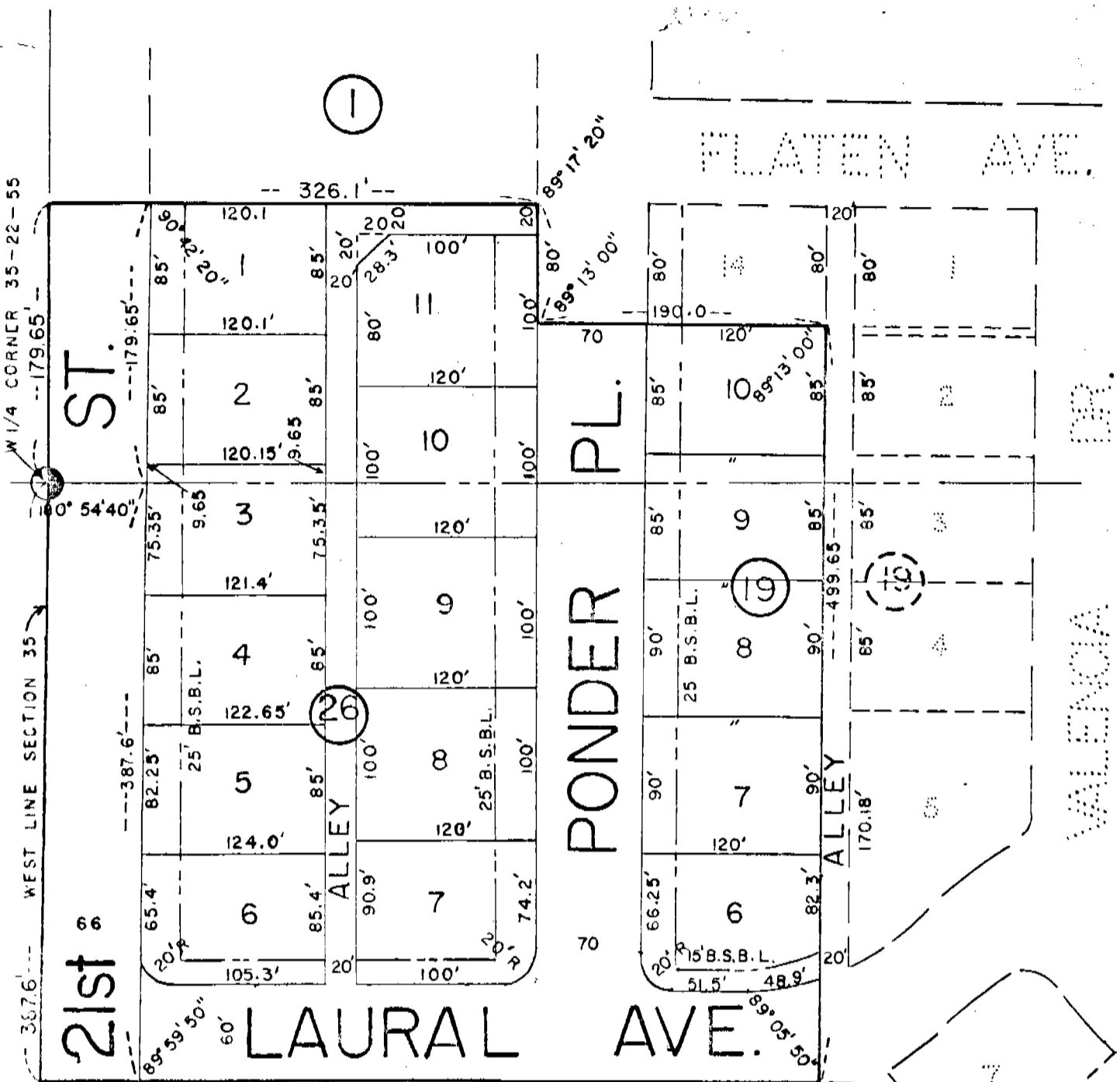


NORTH FIELD FIRST ADDITION

LOTS 6 THRU 10, BLOCK 19, AND LOTS 1 THRU 11, BLOCK 26, AN ADDITION TO THE CITY OF GERING, NEBRASKA, SITUATED ON PART OF THE W 1/2 OF SECTION 35, T22N, R55W OF THE 6th P. M., SCOTTS BLUFF COUNTY, NEBR.

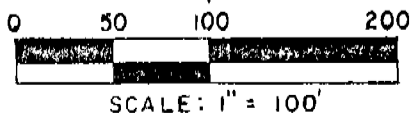
6018



522.25'

Δ CURVE DATA
 Δ = 42° 35' 30"
 T = 75.67
 R = 194.13

6.59 Acres



NORTHFIELD FIRST ADDITION
 Lots 6-10, Block 19 and Lots 1-11, Block 26
 Sheet 2 of 3

6018

SURVEYOR'S CERTIFICATE

I, Ronald L. Vogel, a competent surveyor of Scotts Bluff County, Nebraska, hereby certify that I have surveyed a part of the Southwest Quarter of the Northwest Quarter (SW 1/4 NW 1/4) and the Northwest Quarter of the Southwest Quarter (NW 1/4 SW 1/4) of Section Thirty-five (35), Township Twenty-two (22) North, Range Fifty-five (55) West of the 6th P.M., Scotts Bluff County, Nebraska, the boundary of such tract of land being more particularly described as follows:

Beginning at the Southwest corner of such SW 1/4 NW 1/4; then North on the West Line of such SW 1/4 NW 1/4, a distance of 179.65 feet; then a deflection angle to the right of 89°-17'-40" on the South Line of Block One (1), Northfield First Addition, according to the recorded plat thereof, a distance of 326.1 feet to the West Line of Ponder Place; then South on the West Line of Ponder Place, a distance of 80.0 feet; then East on the Westerly extension and the South Line of Lot Fourteen (14), Block Nineteen (19), Northfield First Addition, according to the recorded plat thereof, a distance of 190.0 feet to the Southeast corner of such Lot 14; then South on the West Line of the alley as platted in Block Nineteen (19), Northfield First Addition, a distance of 499.65 feet to the South Line of Laural Avenue; then West on the South Line of Laural Avenue, a distance of 522.25 feet to the West Line of the NW 1/4 SW 1/4 of such Section 35; then North on the West Line of such NW 1/4 SW 1/4, a distance of 387.6 feet to the point of beginning, containing an area of 6.59 acres.

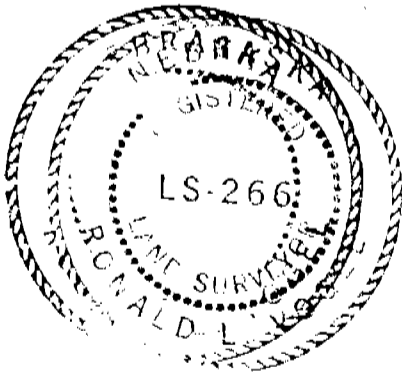
That I have further surveyed and subdivided the land as above described as "Northfield First Addition, Lots Six (6) through Ten (10), Block Nineteen (19) and Lots One (1) through Eleven (11), Block Twenty-six (26)", an Addition to the City of Gering, Nebraska, including parts of Ponder Place, Laural Avenue and 21st Street.

That the accompanying plat is a true delineation of such survey, drawn to a scale of 100 feet to the inch. That all block corners are marked with 3/4" x 36" iron rods and that other corners are marked with 3/4" x 18" iron rods. That all dimensions are in feet and decimals. That each lot and block bears its own number and that the boundary of the subdivision is shown on the plat with a heavy solid line and adjoining platted lands are shown in dashed lines for orientation purposes.

WITNESS MY HAND AND SEAL this 20th day of July, 1977.

Ronald L. Vogel

RONALD L. VOGEL
 Nebraska Registered Land Surveyor
 L.S. 266



NORTHFIELD FIRST ADDITION
Lots 6-10, Block 19 and Lots 1-11, Block 26
Sheet 3 of 3

6018

DEDICATION & ANNEXATION

The undersigned, being the owners of that part of the Southwest Quarter of the Northwest Quarter (SW 1/4 NW 1/4) and the Northwest Quarter of the Southwest Quarter (NW 1/4 SW 1/4) of Section Thirty-five (35), Township Twenty-two (22) North, Range Fifty-five (55) West of the 6th P.M., Scotts Bluff County, Nebraska, as described in the foregoing "Surveyor's Certificate" and shown by the accompanying plat have caused such real estate to be surveyed and platted as "Northfield First Addition, Lots 6-10, Block 19 and Lots 1-11, Block 26", an Addition to the City of Gering, Nebraska.

We hereby dedicate the streets, avenues, easements and alleys shown on and referred to in the plat to the use and benefit of the public and further annex and make such real estate a part of the City of Gering, Nebraska.

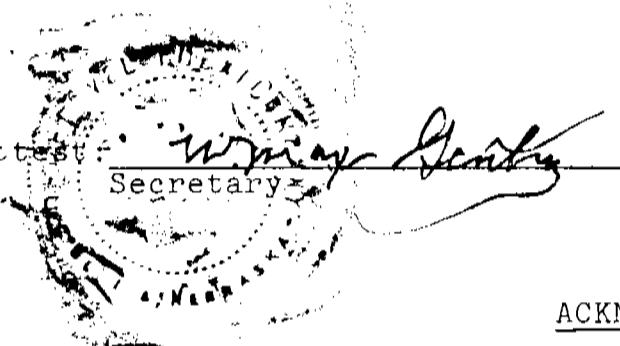
The above described and foregoing subdivision and the streets, avenues, alleys and building setback designations are made with the free consent and in accordance with the desires of the undersigned owners.

Dated this 25 day of July, 1977.

DOME DEVELOPMENT CO. A Nebraska Corporation

Attest:

Secretary



By:

William C. Davis
William C. Davis, President

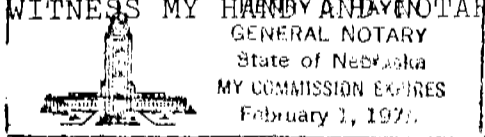
ACKNOWLEDGEMENT

STATE OF NEBRASKA)

SCOTTS BLUFF COUNTY)

Before me, a Notary Public, qualified in such County, personally came William C. Davis, President of Dome Development Co., a Nebraska Corporation, to me known to be the identical person and President of such Corporation who signed the foregoing "Dedication & Annexation" and acknowledged the execution thereof to be his voluntary act and deed and the voluntary act and deed of such company.

WITNESS MY HAND AND NOTARIAL SEAL this 25th day of July, 1977.



Notary Public

My Commission expires: February 1, 1978

APPROVAL AND ACCEPTANCE

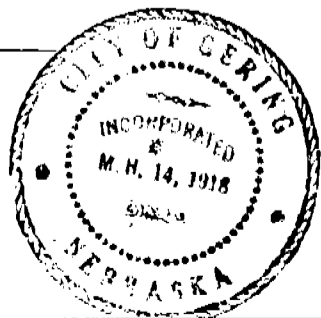
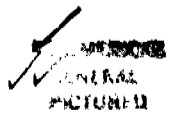
The foregoing plat of "Northfield First Additon, Lots 6-10, Block 19 and Lots 1-11, Block 26, an Addition to the City of Gering, Nebraska, approved and accepted by the Mayor and City Council of the City of Gering, Nebraska, by Ordinance No. 1042 duly passed this 25th day of July, 1977.

John McCallan
Mayor

ATTEST:

City Clerk

Richard L. Town



State of Nebraska, Scotts Bluff County ss.
Entered in Numerical Index and filed for
record the 24 day of October, 1977
at 2:25 o'clock P. M., and recorded in
Book 156 of Reeds
on page 92
Mary J. Ellis
Register of Deeds