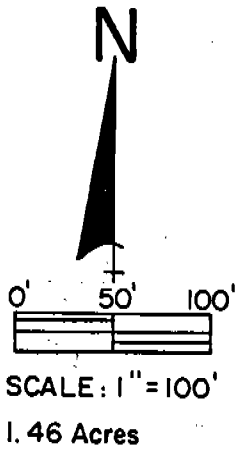


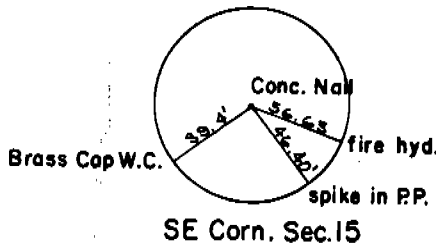
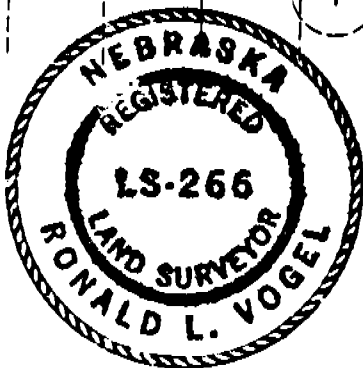
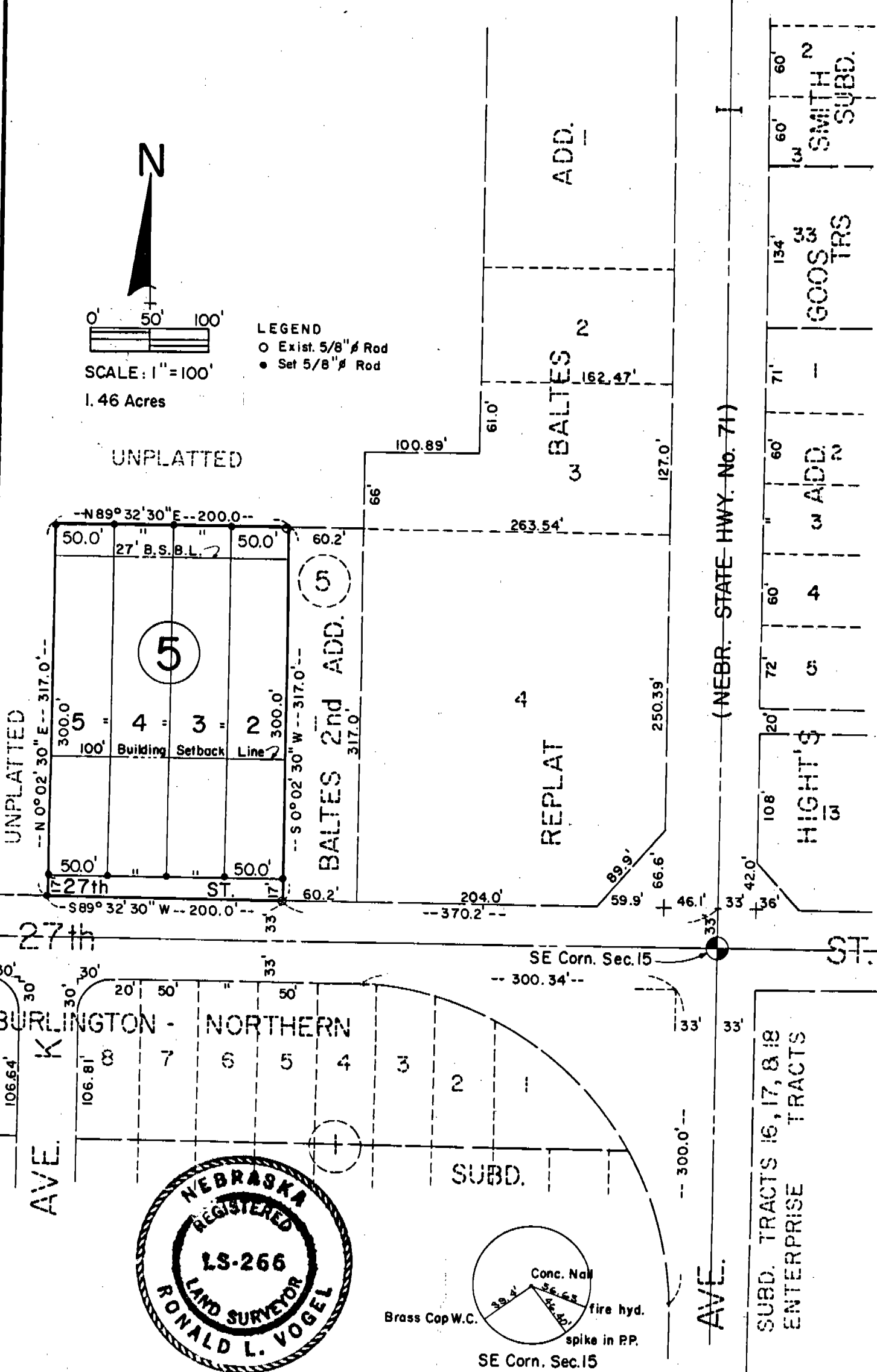
# BALTES SECOND ADDITION

LOTS 2 THRU 5 INCLUSIVE, BLOCK 5  
An Addition to The City of Scottsbluff, Nebraska

6845



LEGEND  
○ Exist. 5/8" Rod  
● Set 5/8" Rod



Baltes Second Addition  
 Lots 2 through 5, Block 5  
 Continuation Sheet 2 of 3

6845

SURVEYOR'S CERTIFICATE

I, Ronald L. Vogel, a competent surveyor of Scotts Bluff County, Nebraska, hereby certify that I have surveyed a tract of land situated in the Southeast Quarter of the Southeast Quarter (SE 1/4 SE 1/4) of Section Fifteen (15), Township Twenty-two (22) North, Range Fifty-five (55) West of the 6th P.M., Scotts Bluff County, Nebraska, such tract of land being more particularly described as follows:

With reference to the Southeast corner of such Section 15; then North on the East Line of such SE 1/4 SE 1/4, a distance of 33.0 feet; then South 89°-32'-30" West, parallel to the South Line of such SE 1/4 SE 1/4, a distance of 370.20 feet to the point of beginning, such point of beginning being the Southwest corner of Lot One (1), Block Five (5), Baltes Second Addition in the City of Scottsbluff, Nebraska, according to the recorded plat thereof; then continuing South 89°-32'-30" West, a distance of 200.0 feet; then North 0°-02'-30" East, a distance of 317.0 feet; then North 89°-32'-30" East, a distance of 200.0 feet to the Northwest corner of Lot One (1), Block Five (5), Baltes Second Addition in the City of Scottsbluff, Nebraska, according to the recorded plat thereof; then South 0°-02'-30" West on the West Line of such Lot 1, Block 5, a distance of 317.0 feet to the point of beginning, containing an area of 1.46 acres.

That I have further surveyed and subdivided the land as above described as "Baltes Second Addition, Lots Two (2) through Five (5), Block Five (5), including parts of streets and avenues therein."

That the accompanying plat is a true delineation of such survey and subdivision, drawn to a scale of 100 feet to the inch. That all block corners are marked with 5/8" x 36" iron rods and that all other corners are marked with 5/8" x 18" iron rods. That all dimensions are in feet and decimals and that each lot and block bears its own number. That the boundary of the land subdivided is shown on the plat with a heavy solid line and that adjoining platted lands are shown dashed for orientation purposes.

WITNESS MY HAND AND SEAL this 17th day of November, 1977.



*Ronald L. Vogel*  
 RONALD L. VOGEL  
 Nebraska Registered Land Surveyor  
 L.S. 266

