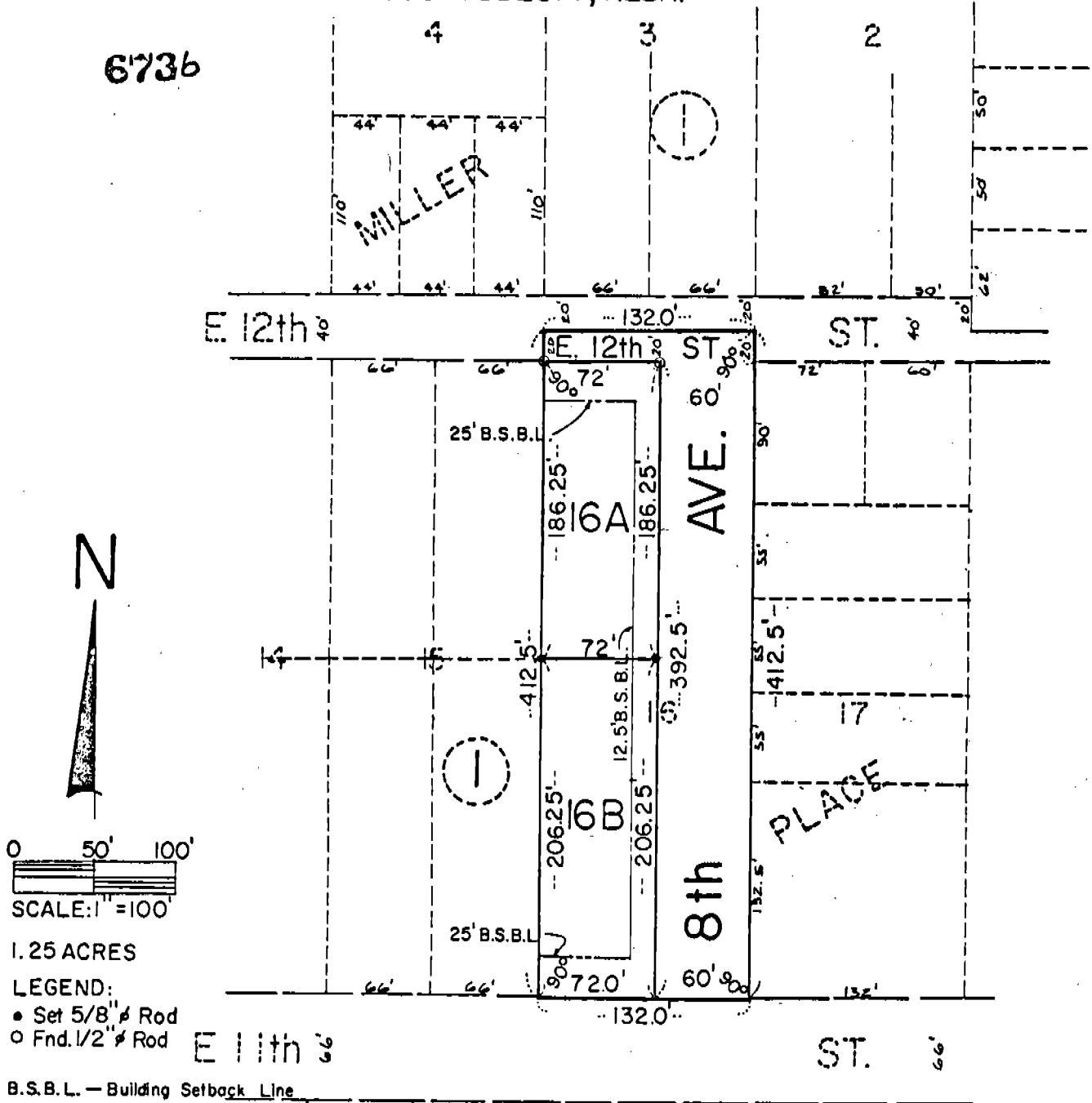


SUBDIVISION OF LOT 16
BLOCK 1, MILLER PLACE, AN ADDITION IN THE CITY OF
SCOTTSBLUFF, NEBR.

6736



7 6 5 4 3 2 1
SUBD. PART OF BLK. 2, MILLER PL.

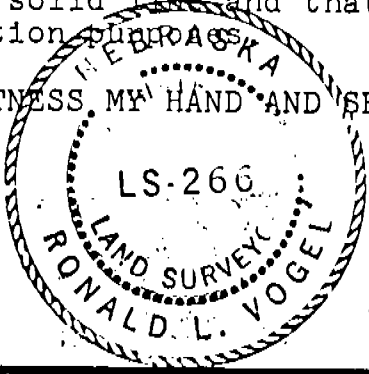
SURVEYOR'S CERTIFICATE

I, Ronald L. Vogel, a competent surveyor of Scotts Bluff County, Nebraska, hereby certify that I have surveyed Lot Sixteen (16), Block One (1), Miller Place, an Addition in the City of Scottsbluff, Nebraska, according to the recorded plat thereof.

That I have further surveyed and subdivided such Lot Sixteen (16), Block One (1), Miller Place, an Addition in the City of Scottsbluff, Nebraska as Lots 16A and 16B, Block One (1), Miller Place, an Addition to the City of Scottsbluff, Nebraska.

That the accompanying plat is a true delineation of such survey and subdivision, drawn to a scale of 100 feet to the inch. That each new lot bears its own number and that iron rods are driven well into the ground at all corners of each lot. That all dimensions are in feet and decimals. That the boundary of the subdivision is shown with a heavy solid line and that adjoining subdivisions are shown dashed for orientation purposes.

WITNESS MY HAND AND SEAL this 7th day of September, 1977.



Ronald L. Vogel
RONALD L. VOGEL, Nebraska Registered
Land Surveyor, L.S. 266
Scotts Bluff County Surveyor

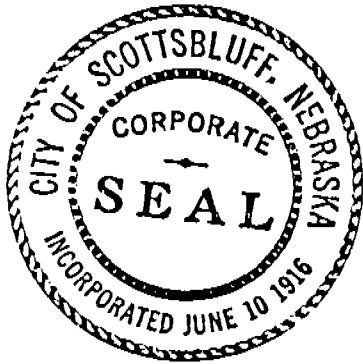
6736

APPROVAL AND ACCEPTANCE

The foregoing plat of Lots 16A and 16B, Block One (1), Miller Place, an Addition in the City of Scottsbluff, Nebraska, approved and accepted by the Mayor and City Council of the City of Scottsbluff, Nebraska, by Resolution duly passed this 24th day of October, 1977.

Ronald E. Querman
Mayor

ATTEST: *A. L. Ferguson*
City Clerk



NUMERICAL
 GENERAL
 CURRI

State of Nebraska, Scotts Bluff County ss.
Entered in Numerical Index and filed for
record the 5 day of December 1977
at 4:00 o'clock P. M., and recorded in
Book 156 of Deeds
on page 339
Mary Jo Ellis
Register of Deeds
By city Sec. Deputy