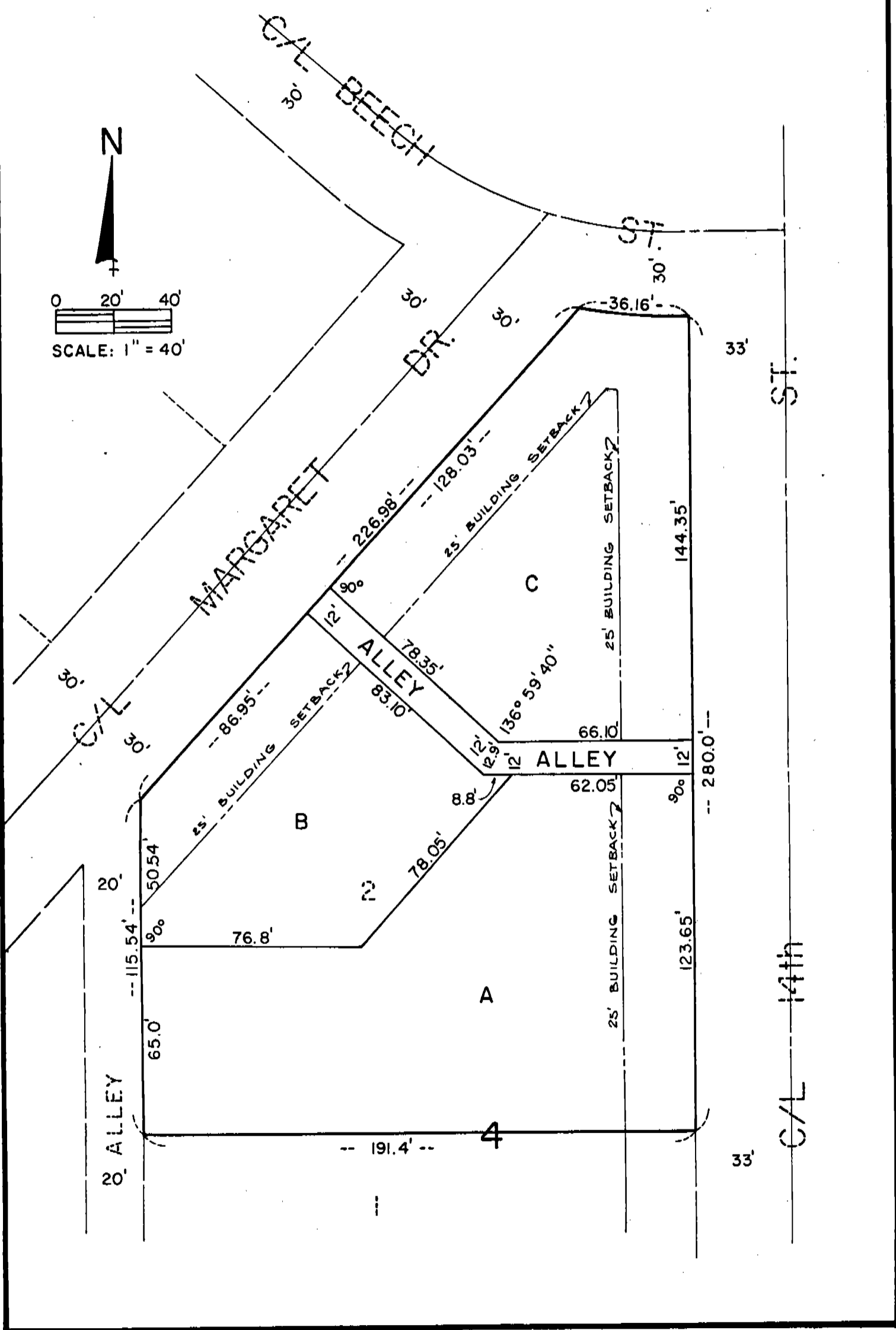


AMENDED SUBDIVISION OF
 LOT 2, BLOCK 4, KIMBERLY PARK ADDITION, IN THE CITY
 OF GERING, NEBRASKA.
 LOTS A, B & C

6337



6337

SURVEYOR'S CERTIFICATE

I, Ronald L. Vogel, a competent surveyor of Scotts Bluff County, Nebraska, hereby certify that I have surveyed Lot 2, Block 4, Kimberly Park, an addition to the City of Gering, Nebraska. That I have further surveyed and subdivided the land as above described as Lots A, B and C including an alley therein. That the subdivision was approved and accepted by the Mayor and City Council of the City of Gering, Nebraska and was filed in the Office of the Register of Deeds of Scotts Bluff County in Book 156, Page 100 on the 25th day of October, 1977. That the plat as filed was incomplete because of certain dimensions that were omitted from the plat. That the attached amended plat is the same plat as originally filed with the necessary dimensions being added.



WITNESS MY HAND AND SEAL this 10th day of November, 1977.

Ronald L. Vogel

RONALD L. VOGEL, NEBRASKA REGISTERED
LAND SURVEYOR LS 266

NUMERICAL
GENERAL
PICTURED

State of Nebraska, Scotts Bluff County ss.
Entered in Numerical Index and filed for
record the 10 day of November, 1977
at 3:50 o'clock P. M., and recorded in
Book 156 of Deeds
on page 208
Mary J. Lillis
Register of Deeds
By _____ Deputy