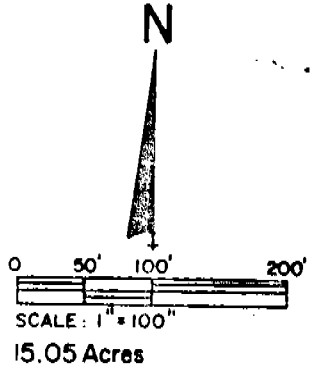
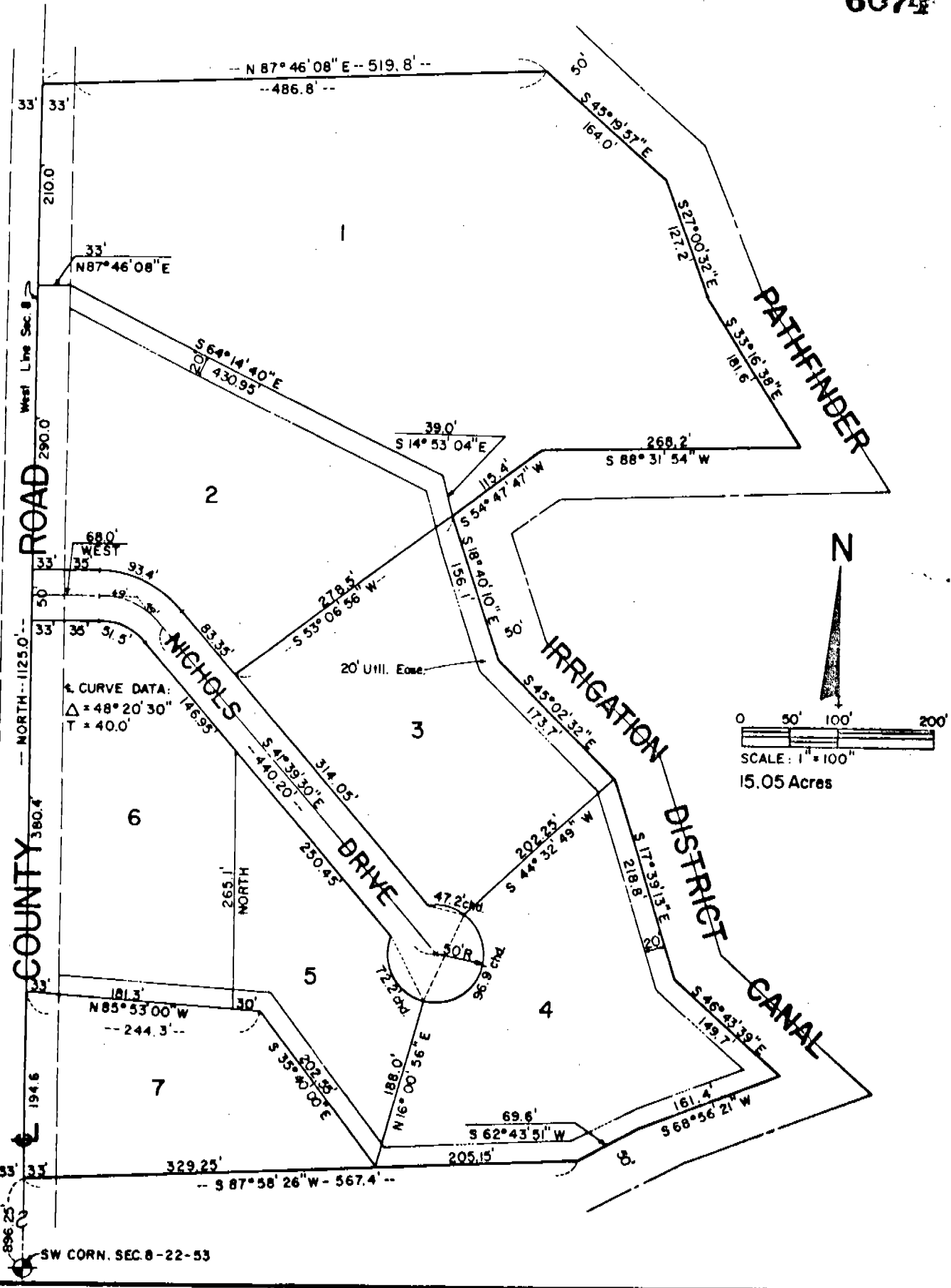


NICHOLS SUBDIVISION

OF PART OF THE SW 1/4 OF SECTION 8, T22N, R53W OF THE 6th P.M.,
SCOTTS BLUFF COUNTY, NEBRASKA.

6074



SW CORN. SEC. 8-22-53

NICHOLS SUBDIVISION
 Scotts Bluff County, Nebraska
 Sheet 2 of 3

6074

SURVEYOR'S CERTIFICATE

I, Ronald L. Vogel, a competent surveyor of Scotts Bluff County, Nebraska, hereby certify that I have surveyed a tract of land situated in the Southwest Quarter (SW 1/4) of Section Eight (8), Township Twenty-two (22) North, Range Fifty-three (53) West of the 6th P.M., Scotts Bluff County, Nebraska, such tract of land being more particularly described as follows:

With reference to the Southwest corner of such Section 8; then NORTH on the West Line of such SW 1/4, a distance of 896.25 feet to the point of beginning; then continuing NORTH on the West Line of such SW 1/4, a distance of 1125.0 feet; then North $87^{\circ}-46'-08''$ East, a distance of 519.8 feet to the Westerly Right-of-Way Line of the Pathfinder Irrigation District Canal; then along such Canal Right-of-Way, South $45^{\circ}-19'-57''$ East, a distance of 164.0 feet; then South $27^{\circ}-00'-32''$ East, a distance of 127.2 feet; then South $33^{\circ}-16'-38''$ East, a distance of 181.6 feet; then South $88^{\circ}-31'-54''$ West, a distance of 268.2 feet; then South $54^{\circ}-47'-47''$ West, a distance of 115.4 feet; then South $18^{\circ}-40'-10''$ East, a distance of 156.1 feet; then South $45^{\circ}-02'-32''$ East, a distance of 173.7 feet; then South $17^{\circ}-39'-13''$ East, a distance of 218.8 feet; then South $46^{\circ}-43'-39''$ East, a distance of 149.7 feet; then South $68^{\circ}-56'-21''$ West, a distance of 161.4 feet; then South $62^{\circ}-43'-51''$ West, a distance of 69.6 feet; then South $87^{\circ}-58'-26''$ West, a distance of 567.4 feet to the point of beginning, containing an area of 15.05 acres.

That I have further surveyed and subdivided the land as above described as "Nichols Subdivision, Lots One (1) through Seven (7)", including parts of drives and streets therein.

That the accompanying plat is a true delineation of such survey and subdivision, drawn to a scale of 100 feet to the inch. That all corners are marked with $5/8''$ x 18" iron rods and that all dimensions are in feet and decimals. That each lot bears its own number and that the boundary of the land subdivided is shown on the plat with a heavy solid line.

WITNESS MY HAND AND SEAL this 7th day of October, 1977.



Ronald L. Vogel

RONALD L. VOGEL
 Nebraska Registered Land Surveyor
 L.S. 266

NICHOLS SUBDIVISION
Scotts Bluff County, Nebraska
Sheet 3 of 3

6074

DEDICATION

We, the undersigned, being the owners of that part of the Southwest Quarter (SW 1/4) of Section Eight (8), Township Twenty-two (22) North, Range Fifty-three (53) West of the 6th P.M., Scotts Bluff County, Nebraska, as shown by the accompanying plat and described in the foregoing "Surveyor's Certificate" have caused such land to be surveyed and platted as "Nichols Subdivision, Lots One (1) through Seven (7)".

We hereby dedicate the streets shown on and referred to in the plat to the use and benefit of the public.

The above described and foregoing subdivision and the streets and easements are made with the free consent and in accordance with the desires of the undersigned owners.

Dated this 10th day of October, 1977.

Orville R. Nichols
Orville R. Nichols

Ruth L. Nichols
Ruth L. Nichols

ACKNOWLEDGEMENT

STATE OF NEBRASKA)
 SS.
SCOTTS BLUFF COUNTY)

Before me, a Notary Public, qualified in such County, personally came Orville R. Nichols and Ruth L. Nichols, Husband and Wife, to me known to be the identical persons who signed the foregoing "Dedication" and acknowledged the execution thereof to be their voluntary act and deed.

WITNESS MY HAND AND NOTARIAL SEAL this 10th day of October, 1977.

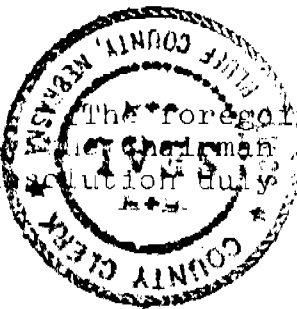
 **BARBARA A. VOGEL**
General Notary-State of Neb.
My Commission Expires
May 17, 1978

Barbara A. Vogel
Notary Public

My Commission expires: _____

APPROVAL AND ACCEPTANCE

The foregoing plat of "Nichols Subdivision" approved and accepted by the Board of Commissioners and County Board of Scotts Bluff County, Nebraska, by resolution duly passed this 24 day of October, 1977.



APPROVED: Melvin Marshall
County Clerk

B. A. Thomas
CHAIRMAN

AMERICAN
GENERAL
FIGURE II

State of Nebraska, Scotts Bluff County ss.
Entered in Numerical Index and filed for
record the 26 day of October, 1977
at 3:15 o'clock P. M., and recorded in
Book 156 of Block
on page 118
Mary J. Ellis
Register of Deeds
By _____ Deputy

B. A. Vogel