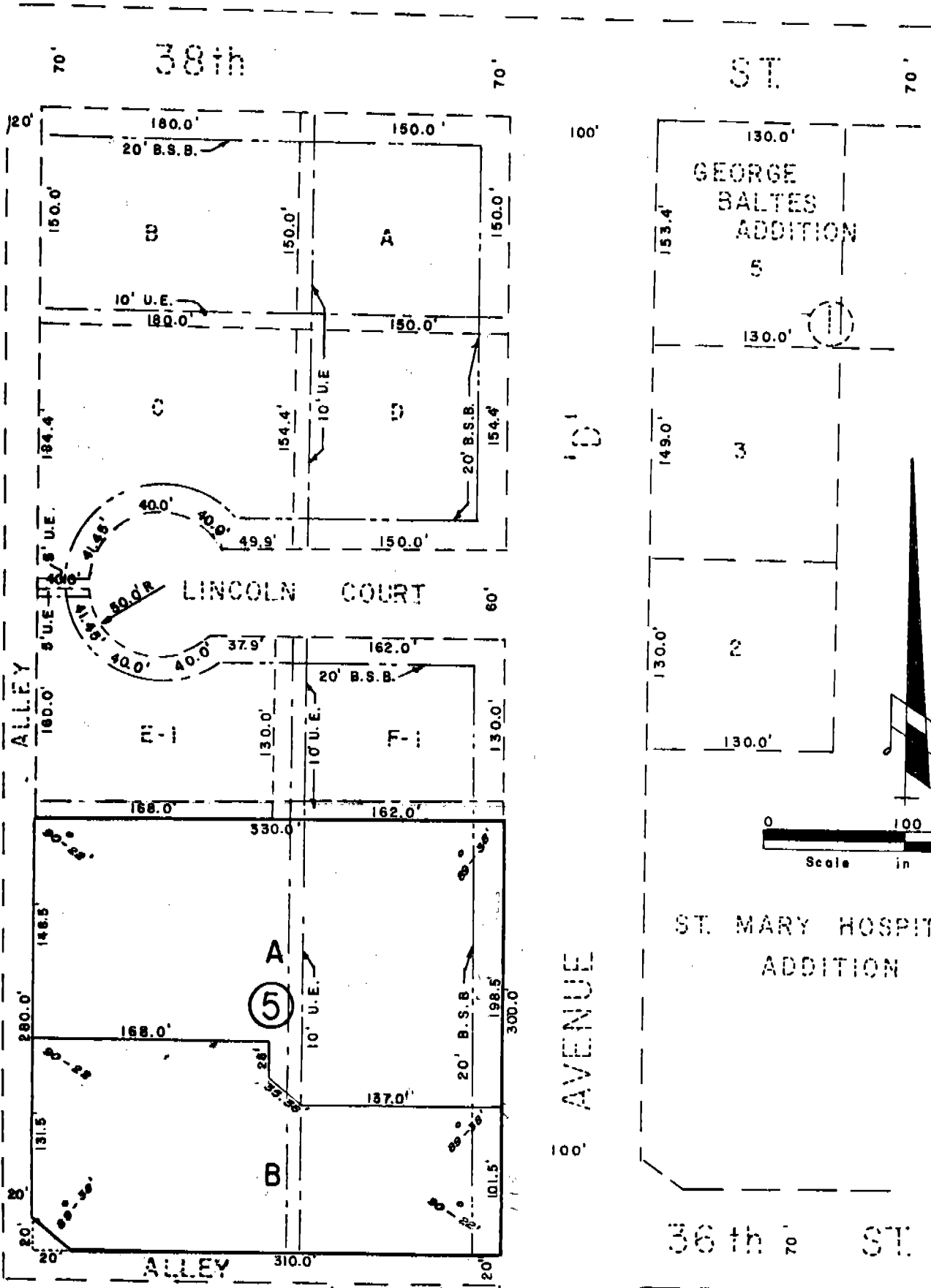


# SUBDIVISION OF LOT 4, 3989 BLOCK 5, GEORGE BALTES ADDITION

An Addition in the City of Scottsbluff, Nebraska

Now platted as Northwestern Estates  
Replat. Deed Book 162-687

UNPLATTED LAND



NOTE: BLOCK CORNERS WERE  
SET WITH 3/4" x 36" REBAR,  
LOT CORNERS WERE SET  
WITH 3/4" x 18" REBAR

GRITZFELD  
TRACTS

ST. MARY HOSPITAL  
ADDITION

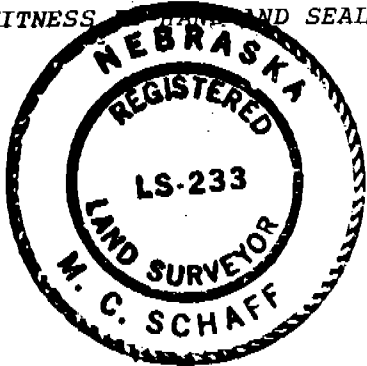
3989

SURVEYOR'S CERTIFICATE

I, M.C. Schaff, a competent surveyor of Scotts Bluff County, Nebraska, hereby certify that I have surveyed Lot 4, Block 5, GEORGE BALTES ADDITION, and have prepared a plat to be known as SUBDIVISION OF LOT 4, BLOCK 5, GEORGE BALTES ADDITION, an Addition in the City of Scottsbluff, Nebraska; and that the accompanying plat is a true delineation of such survey and subdivision drawn to a scale of 100 feet to the inch, containing an area of 2.27 acres more or less.

That all Lot corners are marked with 3/4" x 18" iron rods and that all Block corners are marked with 3/4" x 36" iron rods. That all dimensions are in feet and decimals and each Lot and Block bears its own number. That the Boundary of the survey is shown on the plat with a heavy solid line. That the dashed lines are shown on the plat for orientation purposes only.

WITNESS MY HAND AND SEAL this 18<sup>th</sup> day of May, 19 77.



FOR THE FIRM OF M.C. SCHAFF & ASSOCIATES, INC.

M.C. Schaff  
M.C. Schaff, Nebraska Registered  
Land Surveyor, L.S. 233

OWNER'S STATEMENT

I, the undersigned, being the Owner of Lot 4, Block 5, GEORGE BALTES ADDITION, an addition in the City of Scottsbluff, Nebraska, as described in the foregoing "Surveyor's Certificate" and shown by the accompanying plat, have caused such real estate to be surveyed and platted as SUBDIVISION OF LOT 4; BLOCK 5; GEORGE BALTES ADDITION, an Addition in the City of Scottsbluff, Nebraska.

The foregoing subdivision and plat is made with the free consent and in accordance with the desire of the undersigned owner.

DATED this 18<sup>th</sup> day of MAY, 19 77.

NORTHWOOD PARK,  
A Partnership

Robert E. Berggren  
Robert E. Berggren,  
Partner

ACKNOWLEDGEMENT

STATE OF NEBRASKA )  
SCOTTS BLUFF COUNTY ) SS

Before me, a Notary Public, qualified in said County, personally came Robert Berggren, partner in NORTHWOOD PARK, a partnership, known to me to be the identical person and partner in Northwood Park who signed the foregoing "Owner's Statement" and acknowledged the execution thereof to be his voluntary act and deed and the voluntary act and deed of such partnership.

WITNESS MY HAND AND NOTARIAL SEAL this 18<sup>th</sup> day of MAY, 19 77.

Gene B. Achle  
Notary Public



MY COMMISSION Exp FEBR. 17, 1980

3989

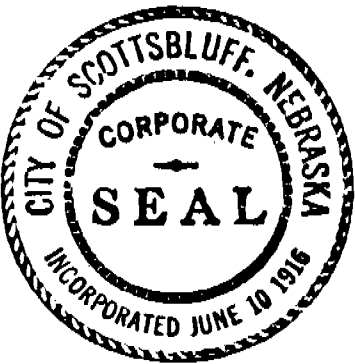
APPROVAL AND ACCEPTANCE

The foregoing plat of GEORGE BALTES ADDITION, hereby approved by the Mayor and City Council of the City of Scottsbluff, Nebraska, by resolution duly passed this 11th day of July, 1977.

Donald E. Casman  
MAYOR

ATTEST:

H. L. Ferguson  
City Clerk



NUMERICAL ✓  
GENERAL  
PICTURED

State of Nebraska, Scotts Bluff County ss.  
Entered in Numerical Index and filed for  
record the 19 day of July, 1977  
at 11:20 o'clock A. M., and recorded in  
Book 155 of Deeds  
on page 54  
Mary Jo Lillis  
Register of Deeds  
By \_\_\_\_\_ Deputy