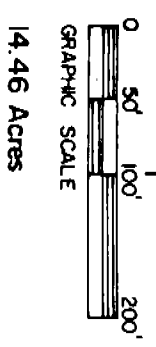
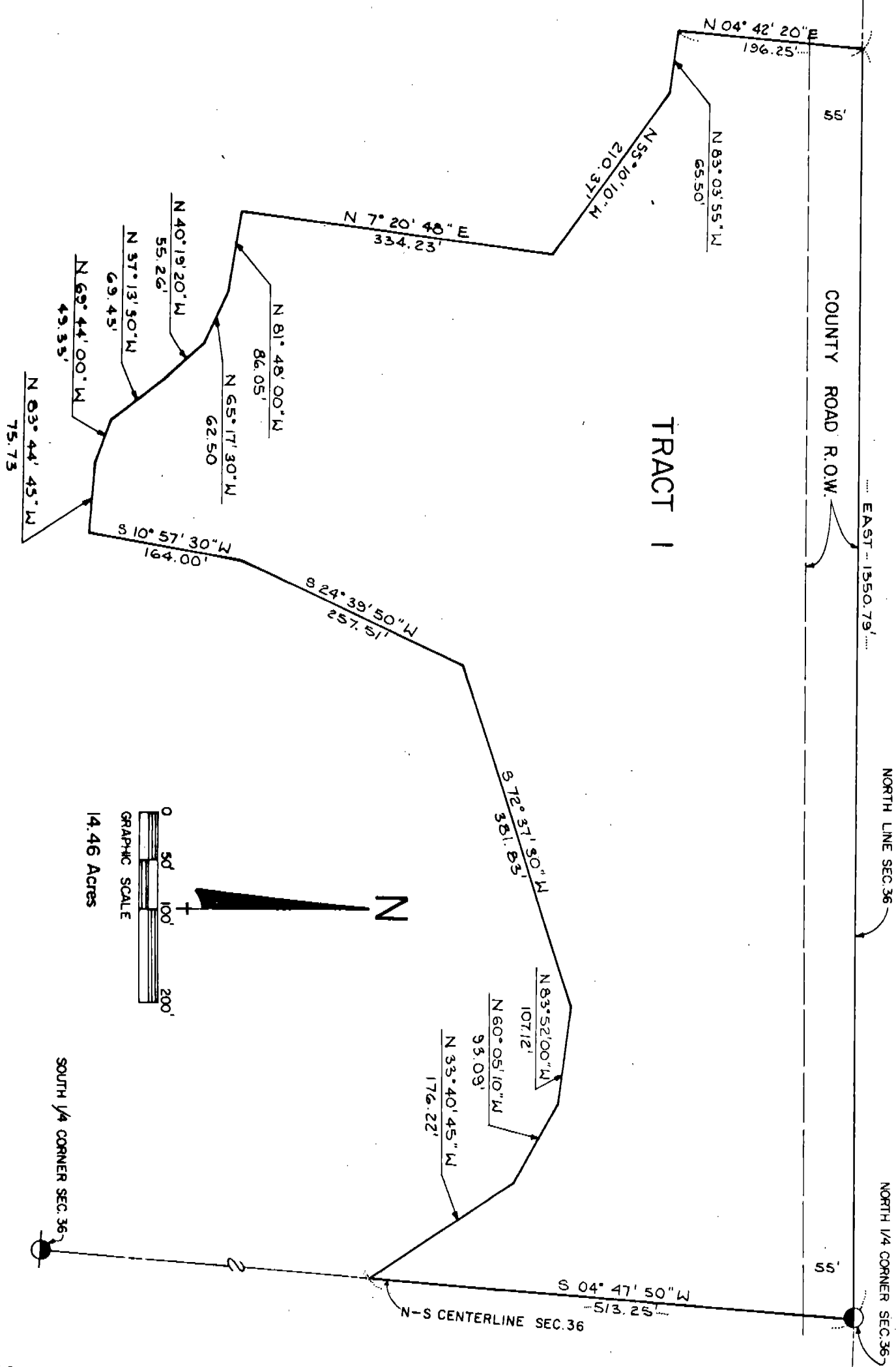


BEYER SUBDIVISION
 A SUBDIVISION OF PART OF THE E 1/2 NW 1/4 SECTION 36, T 23 N, R 55 W
 OF THE 6th P.M., SCOTTS BLUFF COUNTY, NEBRASKA.

5143

TRACT 1

TRACT 1



SOUTH 1/4 CORNER SEC. 36

NW CORNER SEC. 36

COUNTY ROAD R.O.W.

EAST - 1550.79'

NORTH LINE SEC. 36

NORTH 1/4 CORNER SEC. 36

N-S CENTERLINE SEC. 36

BEYER SUBDIVISION
E 1/2 NW 1/4 Section 36, T23N, R55W
Scotts Bluff County, Nebraska

5143

SURVEYOR'S CERTIFICATE

I, Ronald L. Vogel, a competent surveyor of Scotts Bluff County, Nebraska, hereby certify that I have surveyed a part of the East Half of the Northwest Quarter (E 1/2 NW 1/4) of Section Thirty-six (36), Township Twenty-three (23) North, Range Fifty-five (55) West of the 6th P.M., Scotts Bluff County, Nebraska, such tract being more particularly described as follows:

Beginning at the Northwest corner of such E 1/2 of the NW 1/4, such corner being situated 1350.79 feet East of the Northwest corner of such Section 36; then South 04°-42'-20" West on the West Line of such E 1/2 of the NW 1/4, a distance of 196.25 feet to the North Right-of-Way Line of an existing irrigation lateral; then South 83°-03'-55" East on such Right-of-Way, a distance of 65.50 feet; then South 55°-10'-10" East, a distance of 210.37 feet; then South 07°-20'-48" West, a distance of 334.23 feet; then South 81°-48'-00" East, a distance of 86.05 feet; then South 65°-17'-30" East, a distance of 62.50 feet; then South 40°-19'-20" East, a distance of 55.26 feet; then South 37°-13'-30" East, a distance of 69.43 feet; then South 69°-44'-00" East, a distance of 49.33 feet; then South 83°-44'-45" East, a distance of 75.73 feet; then North 10°-57'-30" East, a distance of 164.00 feet; then North 24°-39'-50" East, a distance of 257.51 feet; then North 72°-37'-30" East, a distance of 381.83 feet; then South 83°-52'-00" East, a distance of 107.12 feet; then South 60°-05'-10" East, a distance of 93.09 Feet; then South 33°-40'-45" East, a distance of 176.22 feet to the East Line of such E 1/2 of the NW 1/4; then North 04°-47'-50" East on the East Line of such E 1/2 of the NW 1/4, a distance of 513.25 feet to the North Line of such E 1/2 of the NW 1/4; then WEST on the North Line of such E 1/2 of the NW 1/4, a distance of 1350.79 feet to the point of beginning, except the North 55.0 feet thereof, which was deeded to Scotts Bluff County Road Right-of-Way, containing an area of 12.75 acres, more or less.

That I have further surveyed and subdivided the land as above described as "Tract One (1), Beyer Subdivision".

That the accompanying plat is a true delineation of such survey and subdivision, drawn to a scale of 100 feet to the inch. That all corners are marked with iron rods and that all dimensions are in feet and decimals. That the boundary of the land subdivided is shown on the plat with a heavy solid line.

WITNESS MY HAND AND SEAL this 22nd day of August, 1977.

Ronald L. Vogel

RONALD L. VOGEL
Nebraska Registered Land Surveyor
L.S. 266
Scotts Bluff County Surveyor



NUMERICAL
GENERAL
PICTURE

BEYER SUBDIVISION
E 1/2 NW 1/4 Section 36, T23N, R55W
Scotts Bluff County, Nebraska
Sheet 3 of 3

5143

OWNER'S STATEMENT

The undersigned, being the owner's of that part of the East Half of the Northwest Quarter (E 1/2 NW 1/4) of Section Thirty-six (36), Township Twenty-three (23) North, Range Fifty-five (55) West of the 6th P.M., Scotts Bluff County, Nebraska, as described in the foregoing "Surveyor's Certificate" and shown by the accompanying plat have caused such real estate to be surveyed and platted as "Tract One (1), Beyer Subdivision".

The above described and foregoing subdivision is made with the free consent and in accordance with the desires of the undersigned owners.

Dated this 25th day of August, 1977.

Al E. Beyer
Al E. Beyer

Nancy L. Beyer
Nancy L. Beyer

ACKNOWLEDGEMENT

STATE OF NEBRASKA)
SCOTTS BLUFF COUNTY) SS.

Before me, a Notary Public, qualified in such County, personally came Al E. Beyer and Nancy L. Beyer, Husband and Wife, to me known to be the identical persons who signed the foregoing "Owner's Statement" and acknowledged the execution thereof to be their voluntary act and deed.

WITNESS MY HAND AND NOTARIAL SEAL this 25th day of August, 1977.



BARBARA A. VOGEL
General Notary-State of Nebraska
My Commission Expires
May 17, 1978

Barbara A. Vogel
Notary Public

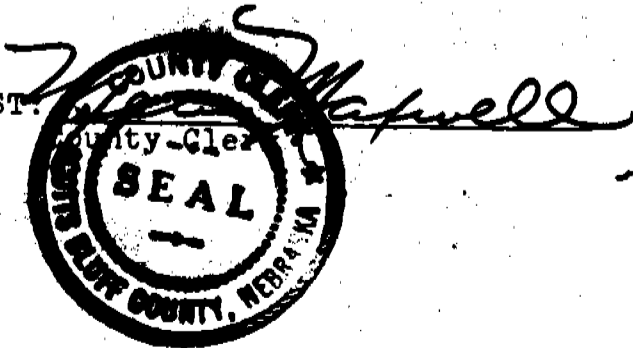
My Commission expires: _____

APPROVAL AND ACCEPTANCE

The foregoing plat of "Beyer Subdivision" approved and accepted by the Chairman and County Board of Scotts Bluff County by Resolution duly passed this 12th day of Sept., 1977.

Ch. A. Thomas
Chairman of the Board

ATTEST:



State of Nebraska, Scotts Bluff County ss.
Entered in Numerical Index and filed for
record the 13 day of September 1977
at 12:15 o'clock P. M., and recorded in
Book 155 of Reels
on page 528
Mary Jo Keller
Register of Deeds
By _____ Deputy