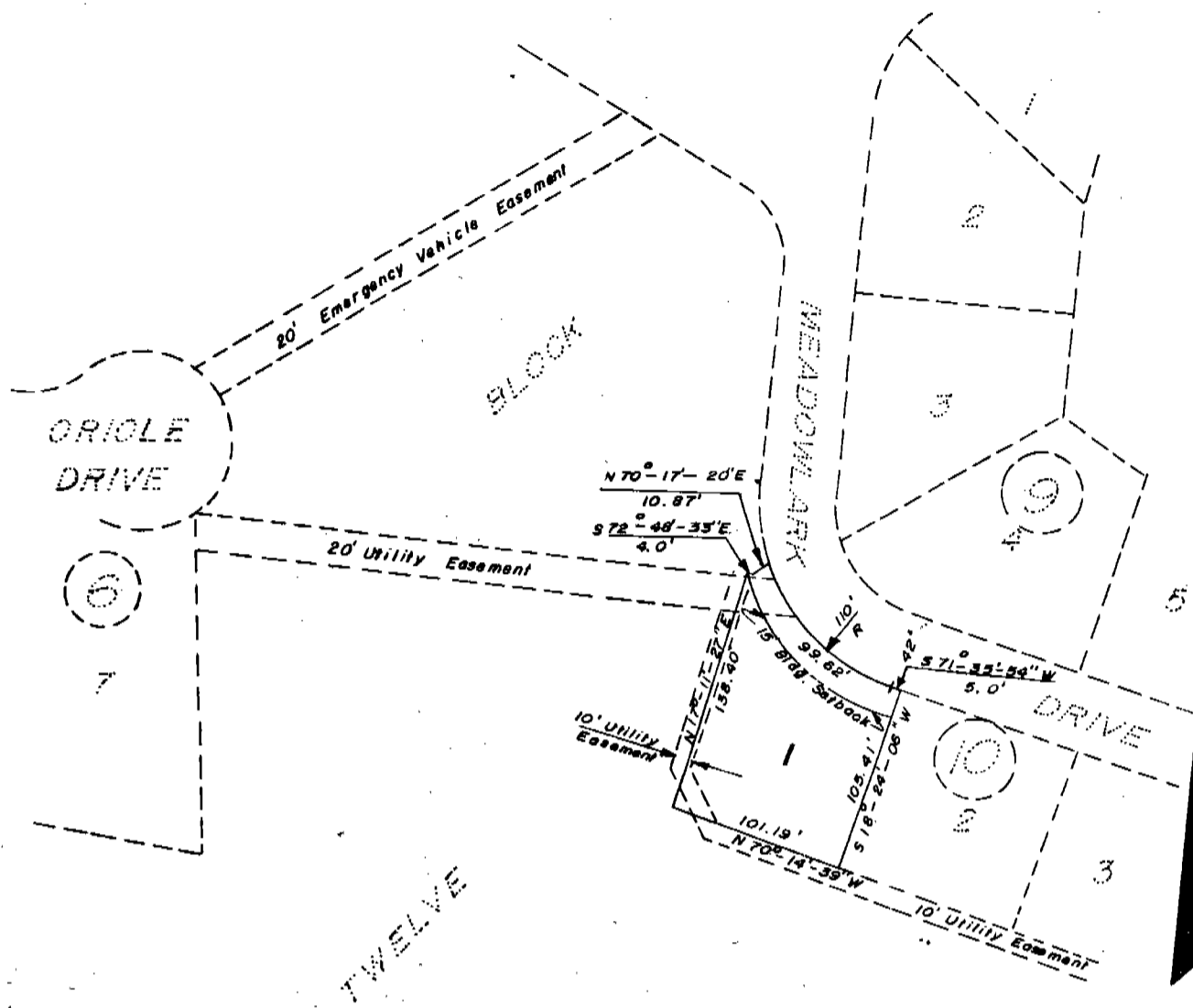


REPLAT OF LOT 1, BLOCK 10, FAIRWAY ESTATES ADDITION

4726

An Addition in Scotts Bluff County,
Nebraska.



SURVEYOR'S CERTIFICATE

I, Duane E. Stott, a competent surveyor of Scotts Bluff County, Nebraska, hereby certify that I have surveyed Lot 1, Block 10, and part of vacated Block 12, FAIRWAY ESTATES and prepared a plat to be known as REPLAT OF LOT 1, BLOCK 10, FAIRWAY ESTATES ADDITION, a Subdivision of part of Section 10, Township 22 North, Range 55 West of the 6th P.M., Scotts Bluff County, Nebraska, more particularly described as follows:



Beginning at the Southwest corner of Lot 2, Block 10, FAIRWAY ESTATES ADDITION; thence, N 70 degrees 14 minutes 39 seconds W, a distance of 101.19 feet; thence, N 17 degrees 11 minutes 27 seconds E, a distance of 138.40 feet; thence, S 72 degrees 48 minutes 33 seconds E, a distance of 4.00 feet; thence, N 70 degrees 17 minutes 20 seconds E, a distance of 10.87 feet, to a point on the Southwest Right-of-Way Line of Meadowlark Drive, such point also being on the arc of a 110.00 foot radius curve; thence, southeasterly on the arc of such curve a distance of 99.62 feet to the point of tangency of such curve; thence, continuing tangent to the last described curve and on a bearing of S 71 degrees 35 minutes 54 seconds W, a distance of 5.00 feet; thence, S 18 degrees 24 minutes 06 seconds W, a distance of 105.41 feet to the point of beginning, containing an area of 0.28 acres more or less.

That the accompanying plat is a true delineation of such survey and Replat drawn to a scale of 100 feet to the inch. That all corners are marked with 3/4" x 18" rebar and that all dimensions are in feet and decimals.

WITNESS MY HAND this 30th day of June, 19 77.



FOR THE FIRM OF M.C. SCHAFF & ASSOCIATES, INC.

Duane E. Stott
Duane E. Stott, Nebraska Registered
Land Surveyor, L.S. 342