

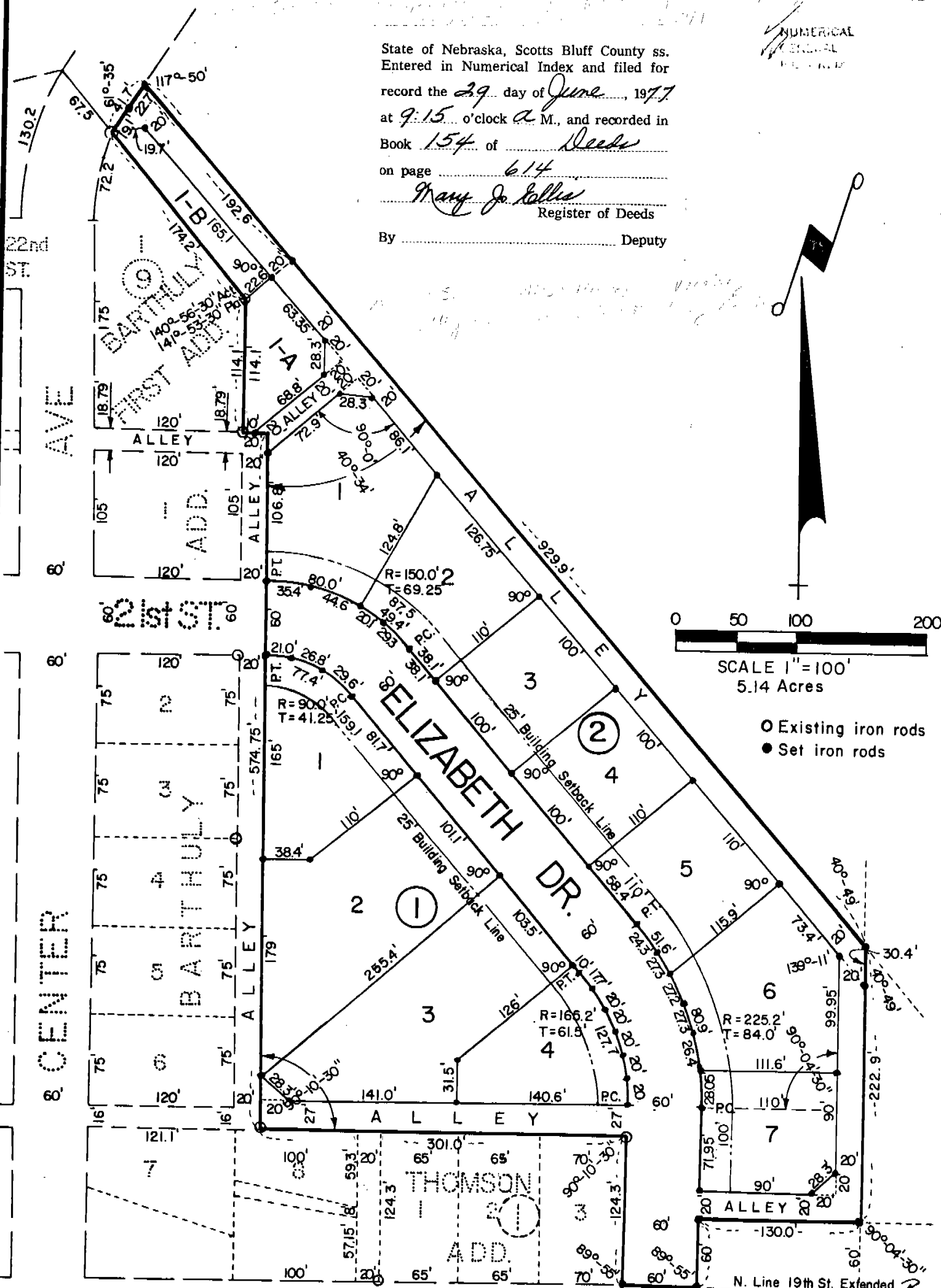
BARTHULY SECOND ADDITION

3563

AN ADDITION TO THE CITY OF MITCHELL, NEBR.

State of Nebraska, Scotts Bluff County ss.
 Entered in Numerical Index and filed for
 record the 29 day of June, 1917
 at 9:15 o'clock a. M., and recorded in
 Book 154 of Deeds
 on page 614
Mary Jo Kellie
 Register of Deeds
 By _____ Deputy

NUMERICAL
 INDEX
 FILED



Kenneth George Roberts
 Kenneth George Roberts, Scottsbluff, Nebr.
 Nebraska Registered Land Surveyor L. . . 33



S U R V E Y O R ' S C E R T I F I C A T E

I, Kenneth George Roberts, a competent surveyor of Scotts Bluff County, Nebraska do hereby certify that I have surveyed an irregular tract of land situated in the North-half of the Southwest Quarter (N $\frac{1}{2}$ SW $\frac{1}{4}$) Section Twenty-two (22), Township Twenty-three (23) North, Range Fifty-six (56) West of the Sixth Principal Meridian in Scotts Bluff County, Nebraska, more particularly described as follows: Beginning at a point on the southeast corner of Block One (1), THOMSON ADDITION to the City of Mitchell, Nebraska according to the recorded plat thereof; thence North on the east line of such Block One (1), a distance of 124.3 feet to the northeast corner of such Block; thence west on the north line of such Block, a distance of 200 feet to the northwest corner of such Block; thence continuing west on the last described line extended west, a distance of 101.0 feet to intersect the east line of the existing platted north-south alley bordering the east line of Barthuly Addition to the City of Mitchell, Nebraska, according to the recorded plat thereof; thence north on the east line of such alley, a distance of 574.75 feet to the north line of the east-west alley bordering the north line of such Barthuly Addition; thence west on the north line of such alley, a distance of 20 feet to the southeast corner of Block Nine (9), Barthuly First Addition, according to the recorded plat thereof; thence north on the east line of such Block Nine (9), a distance of 114.1 feet; thence in a northwesterly direction, on the northeast line of such Block Nine (9), a distance of 174.2 feet to the northwest corner of such Block (9), being also the east line of Center Avenue as platted, dedicated and recorded in the City of Mitchell, Nebraska; thence angle right 61 degrees, 35 minutes, a distance of 41.7 feet in a northeasterly direction to a point on the south bank of the Mitchell Drainage District Ditch; thence angle right 117 degrees, 50 minutes, a distance of 929.9 feet, in a southeasterly direction on such south bank; thence angle right 40 degrees, 49 minutes, a distance of 222.9 feet in a southerly direction, parallel with the northerly extension of the aforementioned east line of Block One (1), THOMSON ADDITION; Thence angle right 89 degrees, 55 $\frac{1}{2}$ minutes, a distance of 130 feet in a westerly direction to intersect the northerly extension of the east line of 13th Avenue of the City of Mitchell, Nebraska; thence south on such northerly extension a distance of 60 feet to the north line of 19th Street of such City; thence west on the north line of such 19th Street, a distance of 60 feet to the point of beginning, containing 5.14 acres more or less.

That the accompanying plat is a correct delineation of such survey drawn to a scale of 100 feet to one inch with all dimensions shown thereon in feet and decimals.

That all corners are marked with a 5/8" X 3/6" iron rods driven well into the ground at all corners of each lot and block and the subdivision boundaries.

That each lot and block bears its own number or number-letter combination.

That the boundary of the subdivision is outlined with a heavy solid line, and adjoining lands are shown with dashed lines for orientation purposes only.

That I have prepared a plat of subdivision to be known as BARTHULY SECOND SUBDIVISION TO THE City of Mitchell, Nebraska.

WITNESS MY HAND AND SEAL
this 1st day of May 1977.



Kenneth George Roberts
Kenneth George Roberts, Scottsbluff, Nebraska
Nebraska Registered Land Surveyor L. S. 33

