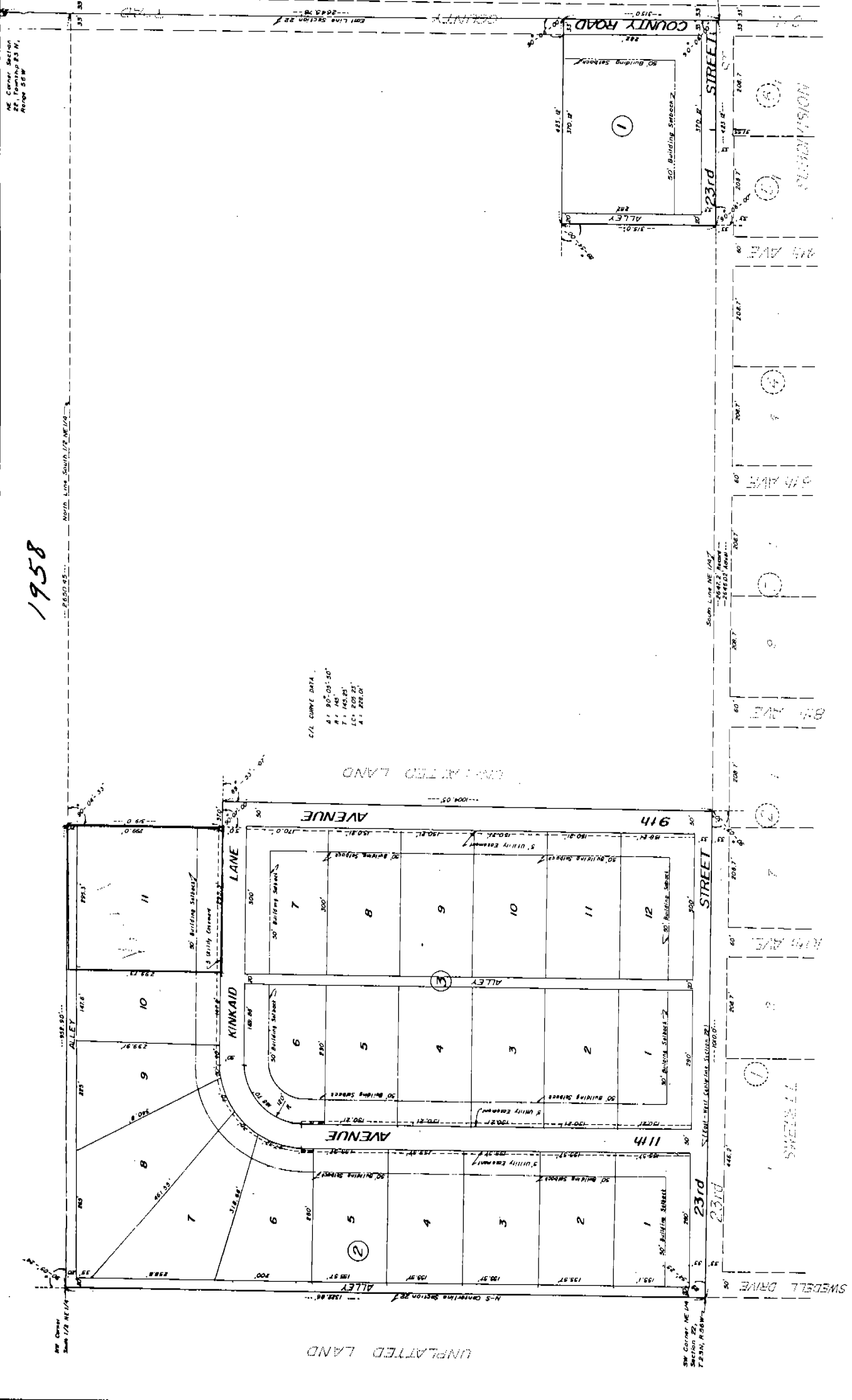
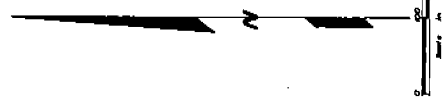


# HOMESTEAD HILLS

A Subdivision of the South Half of the Northeast Quarter of Section 22, Township 23 North, Range 56 West, Scotts Bluff County, Nebraska



C/I CURVE DATA  
 R 1. 90° 05' 50"  
 P 1. 48'  
 L 1. 140.25'  
 A 1. 228.00'

*Subdivision of the South Half of the Northeast Quarter of Section 22, Township 23 North, Range 56 West, Scotts Bluff County, Nebraska*

1958

NE Corner, Section 22, Township 23 N., Range 56 W.

North Line, Section 22

SW Corner NE 1/4 NE 1/4, Section 22, Township 23 N., Range 56 W.

N-S Centerline Section 22

SW Corner NE 1/4 NE 1/4, Section 22, Township 23 N., Range 56 W.

South Line NE 1/4 NE 1/4, Section 22, Township 23 N., Range 56 W.

East 1/4 Corner

1958

SURVEYOR'S CERTIFICATE

I, Duane E. Stott, a competent surveyor of Scotts Bluff County, Nebraska, hereby certify that I have surveyed and prepared a plat of HOMESTEAD HILLS, Block One, Lots 1 through 11, Block 2, Lots 1 through 12, Block 3, 11th Avenue, Kinkaid Lane, 9th Avenue and part of 23rd Street, a Subdivision of the South Half of the Northeast Quarter of Section 22, Township 23 North, Range 56 West of the 6th P.M., Scotts Bluff County, Nebraska, the boundary of such survey and Subdivision being more particularly described as follows:

Block One

Beginning at the East Quarter corner of Section 22; thence, northerly on the East line of the South Half of the Northeast Quarter of Section 22, a distance of 315.00 feet; thence, a deflection angle left of 90 degrees 06 minutes 00 seconds, a distance of 423.12 feet; thence, a deflection angle left of 89 degrees 54 minutes 00 seconds, a distance of 315.00 feet to a point on the East-West Centerline of Section 22; thence, a deflection angle left of 90 degrees 06 minutes 00 seconds on said East-West Centerline, a distance of 423.12 feet to the point of beginning, containing an area of 2.92 acres more or less.

Blocks Two and Three

Beginning at the Southwest Corner of the Northeast Quarter of Section 22; thence, northerly on the West line of said Northeast Quarter, a distance of 1322.86 feet to the Northwest corner of the South Half of the Northeast Quarter; thence, a deflection angle right of 90 degrees 05 minutes 24 seconds on the North line of the South Half of the Northeast Quarter, a distance of 952.90 feet; thence, a deflection angle right of 90 degrees 04 minutes 33 seconds, a distance of 319.00 feet; thence, a deflection angle left of 90 degrees 07 minutes 00 seconds, a distance of 57.00 feet; thence, a deflection angle right of 89 degrees 53 minutes 07 seconds, a distance of 1004.05 feet to a point on the East-West centerline of Section 22; thence, a deflection angle right of 90 degrees 09 minutes 30 seconds on said East-West centerline, a distance of 1010.00 feet to the point of beginning, containing an area of 29.81 acres more or less.

That the accompanying plat is a true delineation of such survey drawn to a scale of 100 feet to the inch. That the dimensions are in feet and decimals and that all corners are marked with 3/4" x 18" rebar.

WITNESS MY HAND AND SEAL this 4<sup>th</sup> day of April, 1977.

FOR THE FIRM OF  
M.C. SCHAFF & ASSOCIATES, INC.

*Duane E. Stott*  
Duane E. Stott, Nebraska Registered  
Land Surveyor, L.S. 342

