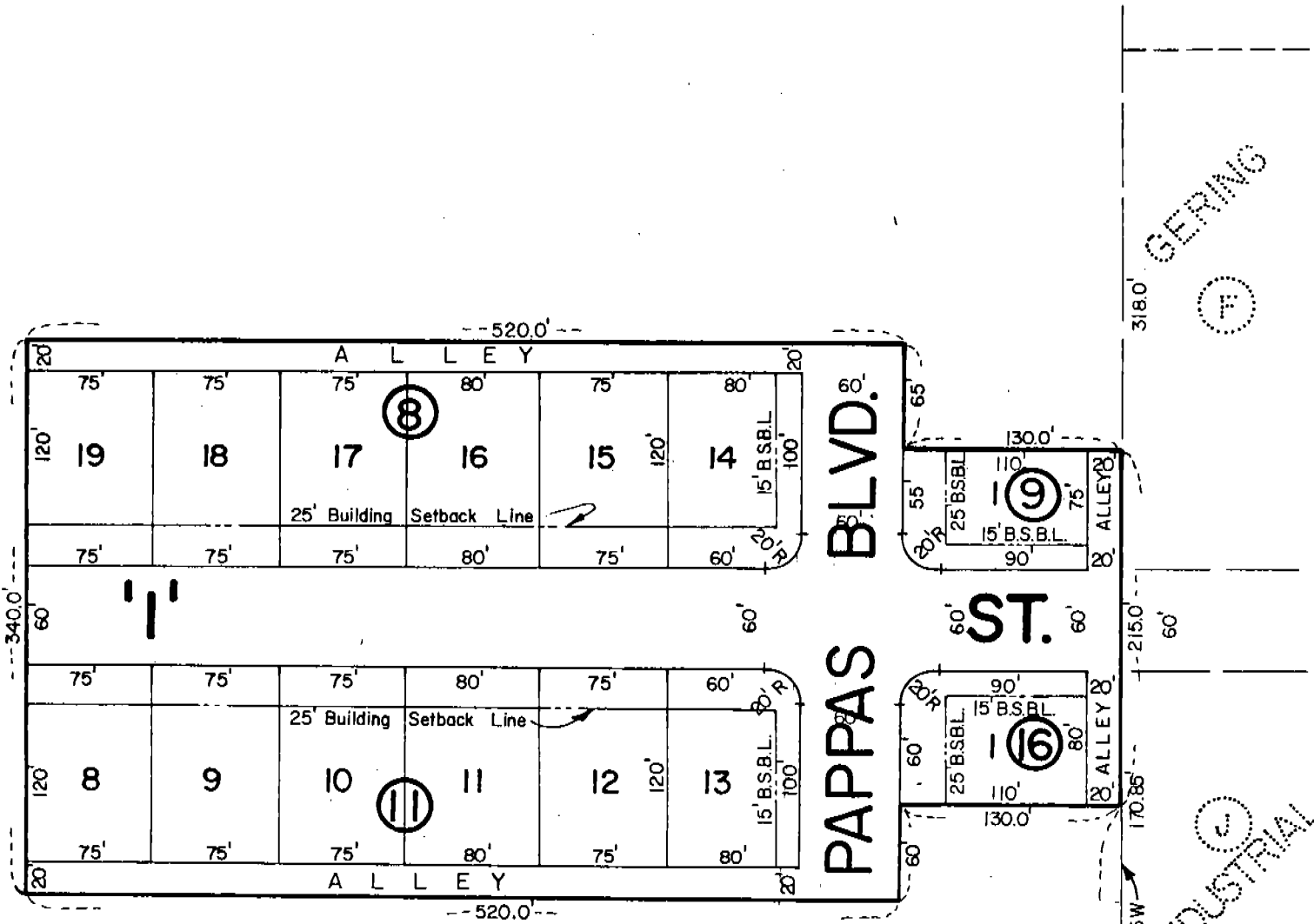
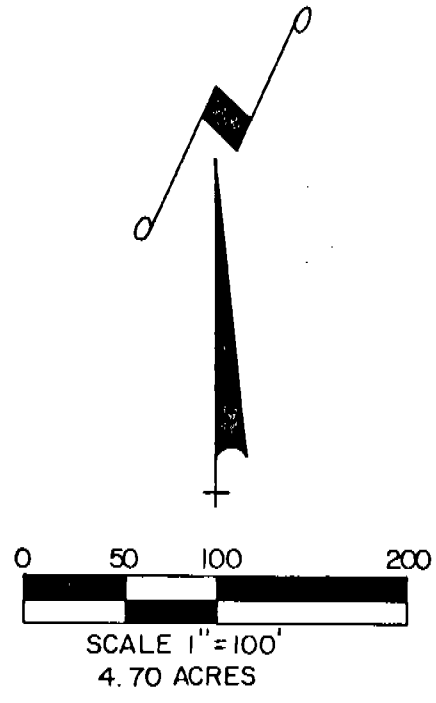


PAPPAS ADDITION 1154

A SUBDIVISION OF PART OF THE SE 1/4 SW 1/4, SEC. 1, T21N, R55W OF THE 6th P.M., SCOTTS BLUFF COUNTY, NEBRASKA.



State of Nebraska, Scotts Bluff County ss.
 Entered in Numerical Index and filed for
 record the 2 day of March, 19 77
 at 1:26 o'clock P. M., and recorded in
 Book 153 of Deeds
 on page 379
Mary J. Kallis
 Register of Deeds
 By _____ Deputy



COUNTY

ROAD

SOUTH 1/4 CORNER
SEC 1, T21N, R55W

SURVEYOR'S CERTIFICATE

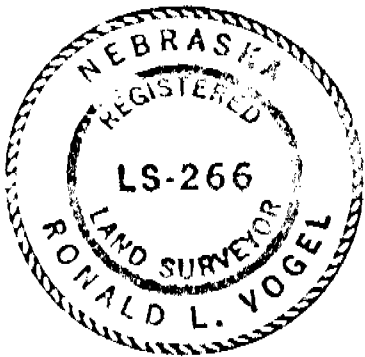
I, Ronald L. Vogel, a competent surveyor of Scotts Bluff County, Nebraska, hereby certify that I have surveyed a part of the Southeast Quarter of the Southwest Quarter (SE 1/4 SW 1/4) of Section One (1), Township Twenty-one (21) North, Range Fifty-five (55) West of the 6th P.M., Scotts Bluff County, Nebraska. The boundary of such tract is more particularly described as follows:

With reference to the Southeast corner of such SE 1/4 SW 1/4 of Section 1; then North on the East Line of such SE 1/4 SW 1/4, a distance of 271.40 feet to the point of beginning; then West, parallel to the North Line of such SW 1/4, a distance of 130.0 feet; then Southerly, parallel to the East Line of such SW 1/4, a distance of 60.0 feet; then West, parallel to the North Line of such SW 1/4, a distance of 520.0 feet; then North, parallel to the East Line of such SW 1/4, a distance of 340.0 feet; then East, parallel to the North Line of such SW 1/4, a distance of 520.0 feet; then South, parallel to the East Line of such SW 1/4, a distance of 65.0 feet; then Easterly, parallel to the North Line of such SW 1/4, a distance of 130.0 feet to the East Line of such SE 1/4 SW 1/4; then South on the East Line of such SE 1/4 SW 1/4, a distance of 215.0 feet to the point of beginning, containing an area of 4.70 acres, more or less.

That I have further surveyed and subdivided such land as above described as "Pappas Addition, Lots Fourteen (14) thru Nineteen (19), Block Eight (8); Lot One (1), Block Nine (9); Lots Eight (8) thru Thirteen (13), Block Eleven (11); and Lot One (1), Block Sixteen (16)" including streets, avenues and alleys therein.

That the accompanying plat is a true delineation of such survey and subdivision, drawn to a scale of 100 feet to the inch. That all corners are marked with 3/4" x 18" iron rods and that all dimensions are in feet and decimals. That each lot and block bears its own number and that the boundary of the land subdivided is shown on the plat with a heavy solid line and that adjoining lands are shown dashed for orientation purposes.

WITNESS MY HAND AND SEAL this 9th day of February, 1977.



Ronald L. Vogel
RONALD L. VOGEL
Nebraska Registered Land Surveyor
L.S. 266

DEDICATION AND ANNEXATION

The undersigned, being the owners of that part of the Southeast Quarter of the Southwest Quarter (SE 1/4 SW 1/4) of Section One (1), Township Twenty-one (21) North, Range Fifty-five (55) West of the 6th P.M., Scotts Bluff County, Nebraska, as described in the foregoing "Surveyor's Certificate" and shown by the accompanying plat, have caused such real estate to be surveyed and platted as "Pappas Addition, Lots 14-19, Block 8; Lot 1, Block 9; Lots 8-13, Block 11; and Lot 1, Block 16", an Addition to the City of Gering, Nebraska.

We hereby dedicate the streets, drives, alleys and easements shown on and referred to in the plat to the use and benefit of the public, and further annex and make such real estate a part of the City of Gering, Nebraska.

The above described and foregoing Subdivision and the streets, drives, easements and building setback designations are made with the free consent and in accordance with the desires of the undersigned owners.

Dated this 9th day of February, 1977.

Theodore George Pappas
Theodore George Pappas

Betty Jane Pappas
Betty Jane Pappas

ACKNOWLEDGEMENT

STATE OF NEBRASKA)
) ss.
SCOTTS BLUFF COUNTY)

Before me, a Notary Public, qualified in such County, personally came Theodore George Pappas and Betty Jane Pappas, Husband and Wife, to me known to be the identical persons who signed the foregoing "Dedication and Annexation" and acknowledge the execution thereof to be their voluntary act and deed.

WITNESS MY HAND AND NOTARIAL SEAL this 9th day of February, 1977.



BARBARA A. VOGEL Barbara A. Vogel
General Notary-State of Nebr. Notary Public
My Commission Expires
May 17, 1978

My Commission expires: _____

APPROVAL AND ACCEPTANCE

The foregoing plat of "Pappas Addition" to the City of Gering, Nebraska, a subdivision of part of the Southeast Quarter of the Southwest Quarter (SE 1/4 SW 1/4) of Section One (1), Township Twenty-one (21) North, Range Fifty-five (55) West of the 6th P.M., Scotts Bluff County, Nebraska, approved and accepted by the Mayor and City Council of the City of Gering, Nebraska, by Ordinance No. 1009 duly passed this 28th day of February, 1977.

[Signature]
Mayor

ATTEST: [Signature]
City Clerk

