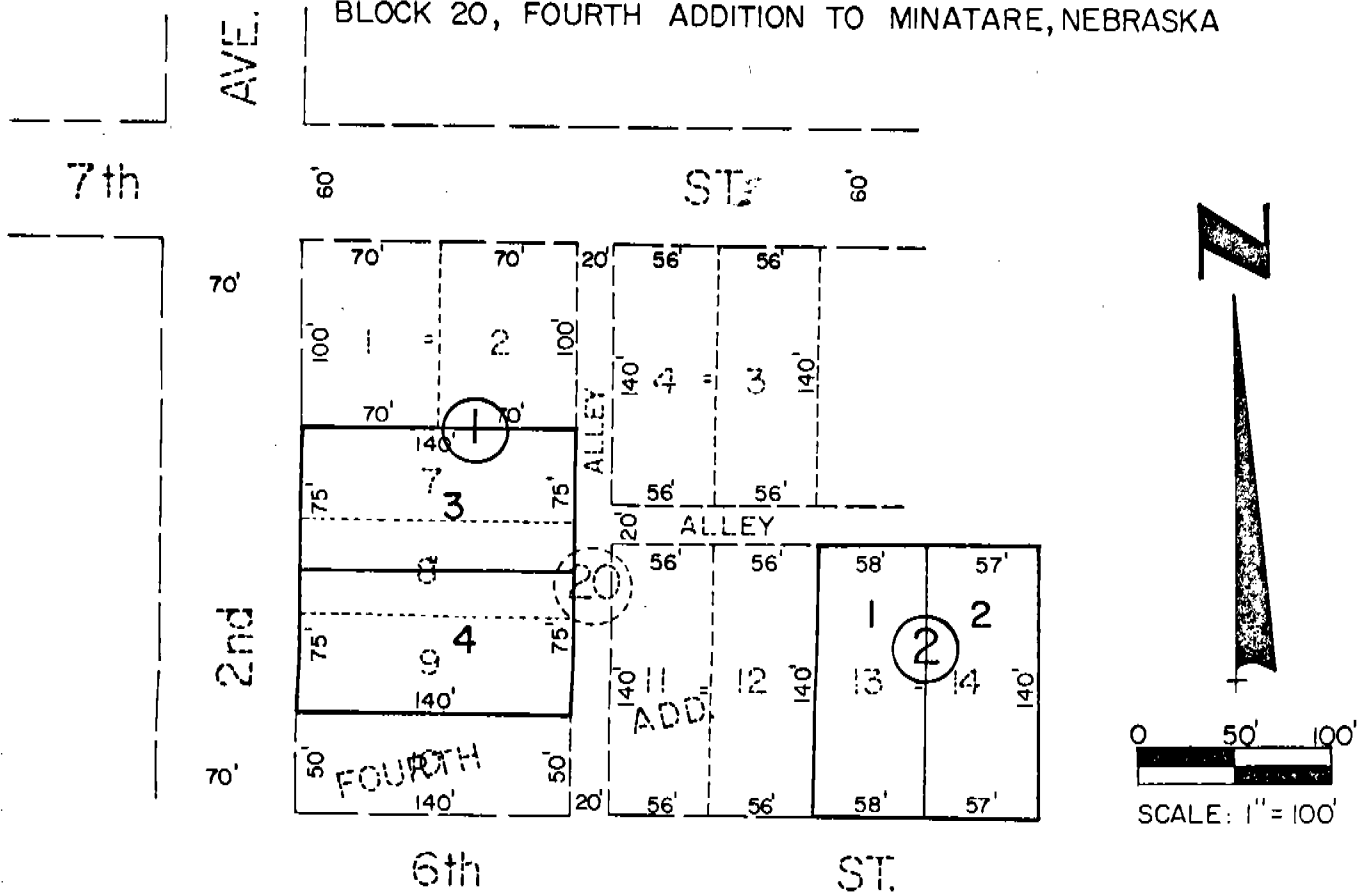


BUCKHAMMER SUBDIVISION

1153

Lots 3&4, Block 1 Lots 1&2, Block 2

A SUBDIVISION AND REPLAT OF LOTS 7, 8, 9, 13 & 14
BLOCK 20, FOURTH ADDITION TO MINATARE, NEBRASKA



SURVEYOR'S CERTIFICATE

I, Ronald L. Vogel, a competent surveyor of Scotts Bluff County, Nebraska, hereby certify that I have surveyed "Buckhammer Subdivision", a subdivision and replat of Lots Seven (7), Eight (8) and Nine (9) and Lots Thirteen (13) and Fourteen (14), Block Twenty (20), Fourth Addition to the City of Minatare, Nebraska. That the lots as subdivided and replatted shall be known as Lots Three (3) and Four (4), Block One (1) and Lots One (1) and Two (2), Block Two (2), Buckhammer Subdivision.

That the accompanying plat is a true delineation of such survey, drawn to a scale of 100 feet to the inch. That all corners are marked with 5/8" x 18" iron rods and that all dimensions are in feet and decimals. That each lot bears its own number and that the boundary of the subdivision is shown on the plat with a heavy solidline.

WITNESS MY HAND AND SEAL this 23rd day of February, 1977.



Ronald L. Vogel
 RONALD L. VOGEL
 Nebraska Registered Land Surveyor
 L.S. 266

