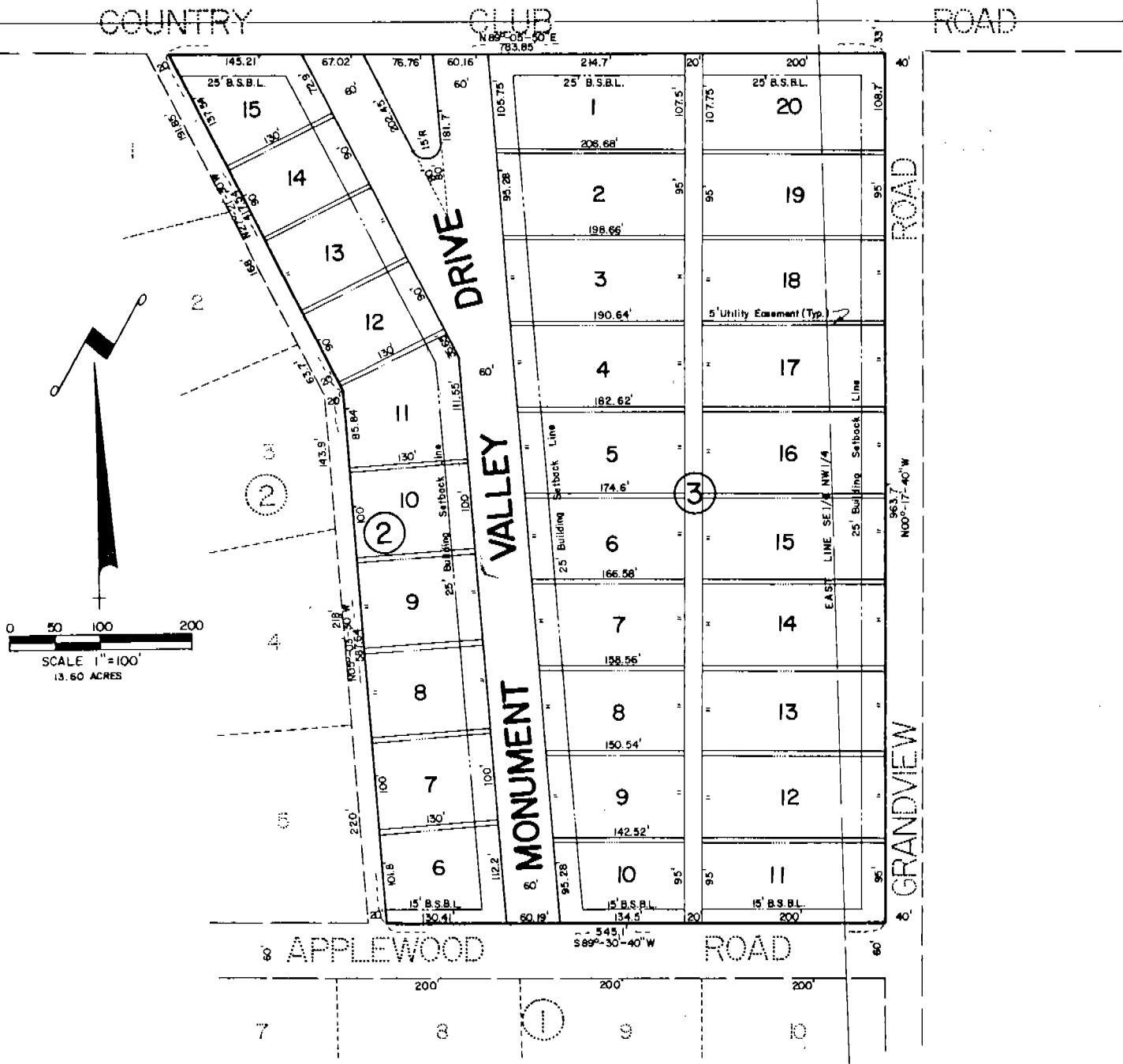


Actual Survey and Plat 10/25/17

MONUMENT HEIGHTS 1025

LOTS 6 THROUGH 15, BLOCK 2 AND LOTS 1 THROUGH 20, BLOCK 3,
SITUATED ON PART OF THE S 1/2 N 1/2 OF SECTION 34, T 22 N,
R 55 W OF THE 6th P.M., SCOTTS BLUFF COUNTY, NEBRASKA

NORTHEAST CORNER SE 1/4 NW 1/4



State of Nebraska, Scotts Bluff County ss.
 Entered in Numerical Index and filed for
 record the 24 day of February, 1917
 at 12:18 o'clock P. M., and recorded in
 Book 153 of Deeds
 on page 318
Mary Jo Lellis
 Register of Deeds
 By _____ Deputy

NUMERICAL
 ✓ ✓ ✓
 CENTRAL
 PICTURED

SURVEYOR'S CERTIFICATE

I, Ronald L. Vogel, a competent surveyor of Scotts Bluff County, Nebraska, hereby certify that I have surveyed a part of the South Half of the North Half (S 1/2 N 1/2) of Section Thirty-four (34), Township Twenty-two (22) North, Range Fifty-five (55) West of the 6th P.M., Scotts Bluff County, Nebraska. The boundary of such tract is more particularly described as follows:

With reference to the center of such Section 34; then North 89°-29'-00" East on the South Line of such South Half of the North Half of Section 34, a distance of 77.3 feet to the East Line of Grandview Road as platted; then North 00°-42'-00" West on the East Line of Grandview Road, a distance of 304.0 feet; then South 89°-30'-40" West, a distance of 40.0 feet to the point of beginning, such point of beginning being the intersection of the North Line of Applewood Road and the West Line of Grandview Road as platted; then continuing South 89°-30'-40" West on the North Line of Applewood Road, a distance of 545.1 feet to the East Line of the alley as platted in Block Two (2), Monument Heights, according to the recorded plat thereof; then North 05°-03'-30" West on the East Line of such alley, a distance of 587.64 feet; then North 27°-21'-30" West on the East Line of such alley, a distance of 417.54 feet to the South Line of Country Club Road; then North 89°-05'-50" East on the South Line of such Country Club Road, a distance of 783.85 feet to the West Line of Grandview Road; then South 00°-17'-40" East on the East Line of such Grandview Road, a distance of 963.7 feet to the point of beginning, containing an area of 13.60 acres, more or less.

That I have further surveyed and subdivided the land as above described as "Monument Heights, Lots 6-15, Block 2 and Lots 1-20, Block 3", including parts of drives and alleys therein.

That the accompanying plat is a true delineation of such survey and subdivision, drawn to a scale of 100 feet to the inch. That all corners are marked with 3/4" x 18" iron rods and that all dimensions are in feet and decimals. That each lot and block bears its own number and that the boundary of the land subdivided is shown on the plat with a heavy solid line and that adjoining lands are shown dashed for orientation purposes.

WITNESS MY HAND AND SEAL this 8th day of February, 1977.



Ronald L. Vogel
RONALD L. VOGEL
Nebraska Registered Land Surveyor
L.S. 266

