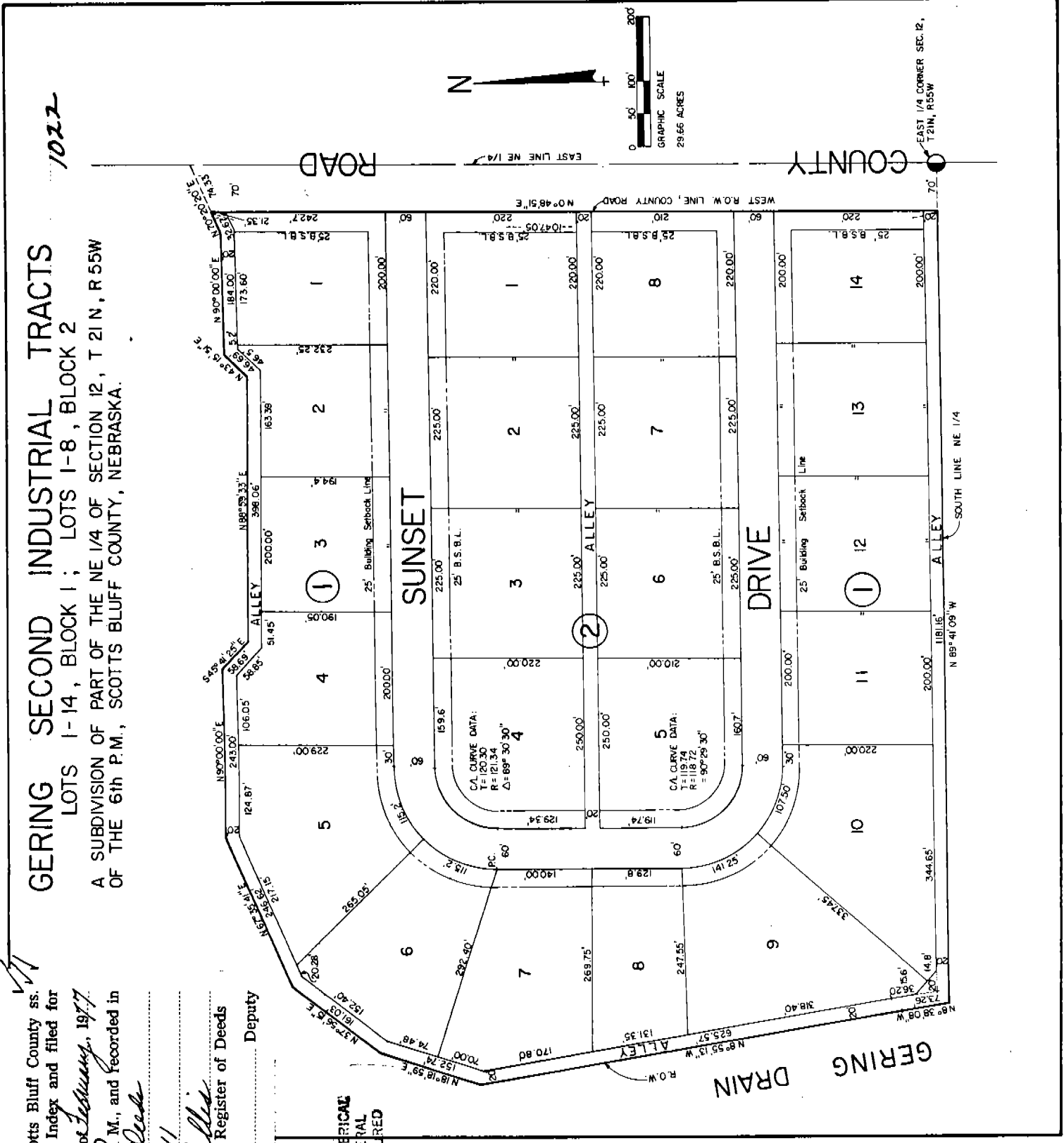


GERING SECOND INDUSTRIAL TRACTS
 LOTS 1-14, BLOCK 1; LOTS 1-8, BLOCK 2
 A SUBDIVISION OF PART OF THE NE 1/4 OF SECTION 12, T 21 N, R 55 W
 OF THE 6th P.M., SCOTTS BLUFF COUNTY, NEBRASKA.

State of Nebraska, Scotts Bluff County ss.
 Entered in Numerical Index and filed for
 record the 24 day of February, 1977
 at 12:15 o'clock P.M., and recorded in
 Book 153 of Deeds
 on page 311
 Mary Jo Collins
 Register of Deeds
 Deputy



1022

SURVEYOR'S CERTIFICATE

I, Ronald L. Vogel, a competent surveyor of Scotts Bluff County, Nebraska, hereby certify that I have surveyed a part of the Northeast Quarter (NE 1/4) of Section Twelve (12), Township Twenty-one (21) North, Range Fifty-five (55) West of the 6th P.M., Scotts Bluff County, Nebraska. The boundary of such tract is more particularly described as follows:

Beginning at a point on the South Line of such NE 1/4, such point being 70.0 feet West of the Southeast corner of such NE 1/4; then North 89°-41'-09" West on the South Line of such NE 1/4, a distance of 1181.16 feet to the East Right-of-Way Line of the Gering Drain; then North 08°-38'-08" West on such East Right-of-Way Line, a distance of 73.26 feet; then North 08°-55'-13" West, a distance of 625.57 feet; then North 18°-18'-59" East, a distance of 152.74 feet; then North 37°-56'-15" East, a distance of 161.03 feet; then North 67°-35'-41" East, a distance of 246.62 feet; then North 90°-00'-00" East, a distance of 243.0 feet; then South 45°-41'-25" East, a distance of 58.69 feet; then North 88°-59'-33" East, a distance of 398.06 feet; then North 43°-15'-51" East, a distance of 46.69 feet; then North 90°-00'-00" East, a distance of 184.0 feet; then North 70°-20'-20" East, a distance of 32.55 feet to intersect the Westerly Right-of-Way Line of an existing County Road; then South 00°-48'-51" West on such Right-of-Way Line a distance of 1047.05 feet to the point of beginning, containing an area of 29.66 acres, more or less.

That I have further surveyed and subdivided such land as above described as "Gering Second Industrial Tracts, Lots One (1) thru Fourteen (14), Block One (1) and Lots One (1) thru Eight (8), Block Two (2)", including streets and alleys therein.

That the accompanying plat is a true delineation of such survey and subdivision, drawn to a scale of 100 feet to the inch. That all corners are marked with 3/4" x 18" iron rods and that all dimensions are in feet and decimals. That each lot and block bears its own number and that the boundary of the land subdivided is shown on the plat with a heavy solid line.

WITNESS MY HAND AND SEAL this 11th day of February, 1977.



Ronald L. Vogel
 RONALD L. VOGEL
 Nebraska Registered Land Surveyor
 L.S. 266

DEDICATION

The undersigned, being the owners of that part of the Northeast Quarter (NE 1/4) of Section Twelve (12), Township Twenty-one (21) North, Range Fifty-five (55) West of the 6th P.M., Scotts Bluff County, Nebraska, as described in the foregoing "Surveyor's Certificate" and shown by the accompanying plat, have caused such real estate to be surveyed and platted as "Gering Second Industrial Tracts, Lots One (1) thru Fourteen (14), Block One (1) and Lots One (1) thru Eight (8), Block Two (2)".

We hereby dedicate the streets and alleys shown on and referred to in the plat to the use and benefit of the public.

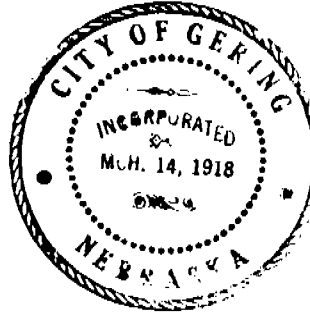
The above described and foregoing subdivision and the streets and alleys are made with the free consent and in accordance with the desires of the undersigned owners.

Dated this 22nd day of February, 1977.

CITY OF GERING, A Municipal Corporation

John McLellan, Jr.
John McLellan, Jr., Mayor

ATTEST: Richard J. Kroon
City Clerk



ACKNOWLEDGEMENT

STATE OF NEBRASKA)
SCOTTS BLUFF COUNTY) ss.

Before me, a Notary Public, qualified in such County, personally came John McLellan, Jr., Mayor of the City of Gering, Nebraska, to me known to be the identical person and Mayor of said City, who signed the foregoing "Dedication" and acknowledge the execution thereof to be his voluntary act and deed and the voluntary act and deed of such municipal corporation.

WITNESS MY HAND AND NOTARIAL SEAL this 22nd day of February, 1977.

Barbara A. Vogel
BARBARA A. VOGEL
General Notary-State of Nebr.
My Commission Expires
May 17, 1978
Notary Public

My Commission expires:

APPROVAL AND ACCEPTANCE

The foregoing plat of "Gering Second Industrial Tracts, Lots 1-14, Block 1 and Lots 1-8, Block 2" to the City of Gering, Nebraska, a subdivision of part of the Northeast Quarter (NE 1/4) of Section Twelve (12), Township Twenty-one (21) North, Range Fifty-five (55) West of the 6th P.M., Scotts Bluff County, Nebraska, approved and accepted by the Mayor and City Council of the City of Gering, Nebraska, by Ordinance No. 1004 duly passed this 14th day of February, 1977.

John McLellan, Jr.
Mayor

ATTEST: Richard J. Kroon
City Clerk

