

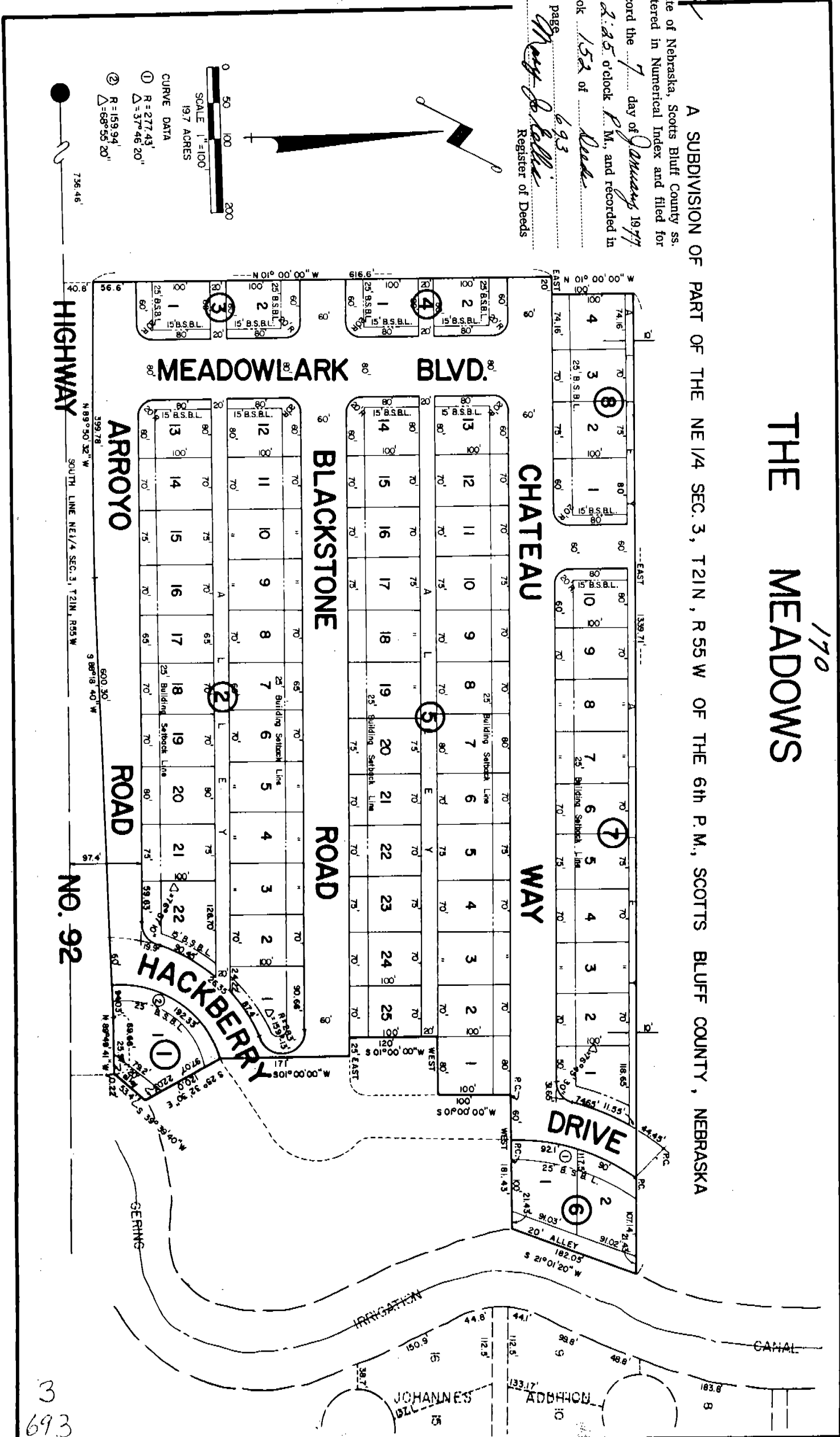
THE MEADOWS

170

A SUBDIVISION OF PART OF THE NE 1/4 SEC. 3, T21N, R55W OF THE 6th P.M., SCOTTS BLUFF COUNTY, NEBRASKA

State of Nebraska, Scotts Bluff County ss.
Entered in Numerical Index and filed for
record the 7 day of January 1977
at 2:25 o'clock P.M., and recorded in
Book 152 of *Deeds*
on page 693

Way & Keller
Register of Deeds



HIGHWAY

NO. 92

3
693

SURVEYOR'S CERTIFICATE

I, Ronald L. Vogel, a competent surveyor of Scotts Bluff County, Nebraska, hereby certify that I have surveyed a tract of land situated in the South Half of the Northeast Quarter (S 1/2 NE 1/4) of Section Three (3), Township Twenty-one (21) North, Range Fifty-five (55) West of the 6th P.M., Scotts Bluff County, Nebraska, such tract of land being more particularly described as follows:

With reference to the Southwest corner of such NE 1/4; then EAST on the South Line of such NE 1/4, a distance of 736.46 feet; then North 01°-00'-00" West, a distance of 40.8 feet to the point of beginning; then continuing North 01°-00'-00" West, a distance of 616.6 feet; then EAST, a distance of 20.0 feet; then North 01°-00'-00" West, a distance of 110.0 feet; then EAST, parallel to the South Line of such NE 1/4, a distance of 1339.71 feet to the Westerly Right-of-Way Line of the main Gering Irrigation District Canal; then South 21°-01'-20" West on such Right-of-Way, a distance of 182.05 feet; then WEST, a distance of 181.43 feet; then South 01°-00'-00" East, a distance of 100.0 feet; then WEST, a distance of 80.0 feet; then South 01°-00'-00" East, a distance of 120.0 feet; then EAST, a distance of 25.0 feet; then South 01°-00'-00" East, a distance of 171.0 feet; then South 25°-32'-30" East, a distance of 120.0 feet to the Westerly Right-of-Way Line of the main Gering Irrigation District Canal; then South 39°-39'-40" West, a distance of 53.4 feet; then SOUTH, a distance of 0.22 feet to the Northerly Right-of-Way Line of State Highway No. 92; then North 89°-49'-41" West on such Right-of-Way Line, a distance of 69.66 feet; then South 88°-18'-40" West on such Right-of-Way Line, a distance of 600.03 feet; then North 89°-50'-32" West on such Right-of-Way Line, a distance of 399.78 feet to the point of beginning, containing an area of 19.7 acres, more or less.

That I have further surveyed and subdivided such land as above described as "The Meadows", Lot One (1), Block One (1); Lots One (1) thru Twenty-two (22), Block Two (2); Lots One (1) and Two (2), Block Three (3); Lots One (1) and Two (2), Block Four (4); Lots One (1) thru Twenty-five (25), Block Five (5); Lots One (1) and Two (2), Block Six (6); Lots One (1) thru Ten (10), Block Seven (7); Lots One (1) thru Four (4), Block Eight (8), including streets, avenues, alleys therein, an Addition to the City of Gering, Nebraska.

That the accompanying plat is a true delineation of such survey and subdivision, drawn to a scale of 100 feet to the inch. That all corners are marked with iron rods and that all dimensions are in feet and decimals. That each lot and block bears its own number and that the boundary of the land subdivided is shown on the plat with a heavy solid line.

WITNESS MY HAND AND SEAL this 12th day of December, 1976.

Ronald L. Vogel
RONALD L. VOGEL
Nebraska Registered Land Surveyor
L.S. 266



NUMERICAL
GENERAL
FIGURED

DEDICATION & ANNEXATION

The undersigned, being the owners of that part of the South Half of the Northeast Quarter (S 1/2 NE 1/4) of Section Three (3), Township Twenty-one (21) North, Range Fifty-five (55) West of the 6th P.M., Scotts Bluff County, Nebraska, as described in the foregoing "Surveyor's Certificate" and shown by the accompanying plat, have caused such real estate to be surveyed and platted as "The Meadows", an Addition to the City of Gering, Nebraska.

We hereby dedicate the streets, avenues, alleys, ways and roads shown on and referred to in the plat to the use and benefit of the public and further annex and make such real estate a part of the City of Gering, Nebraska.

The above described and foregoing subdivision, with the streets, avenues, ways, roads and easements is made with the free consent and in accordance with the desires of the undersigned owners.

Dated this 13th day of December, 1976.

Jonathan E. Hegwood
 Jonathan E. Hegwood

William P. Johannes
 William P. Johannes

Norma E. Hegwood
 Norma E. Hegwood

Hannah Johannes
 Hannah Johannes

ACKNOWLEDGEMENT

STATE OF NEBRASKA)
) ss.
 SCOTTS BLUFF COUNTY)

Before me, a Notary Public, qualified in such County, personally came Jonathan E. Hegwood and Norma E. Hegwood, Husband and Wife and William P. Johannes and Hannah Johannes, Husband and Wife, to me known to be the identical persons who signed the foregoing "Dedication and Annexation" and acknowledged the execution thereof to be their voluntary act and deed.

WITNESS MY HAND AND NOTARIAL SEAL this 13th day of December, 1976.



BARBARA A. VOGEL
 General Notary-State of Nebr.
 My Commission Expires
 May 17, 1978

Barbara A. Vogel
 Notary Public

My Commission expires: _____

APPROVAL AND ACCEPTANCE

The foregoing plat of "The Meadows", an Addition to the City of Gering, Nebraska, approved and accepted by the Mayor and City Council of the City of Gering, Nebraska, by Ordinance No. 984 duly passed this 16th day of December, 1976.

[Signature]
 Mayor

ATTEST:
[Signature]
 City Clerk

