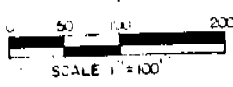
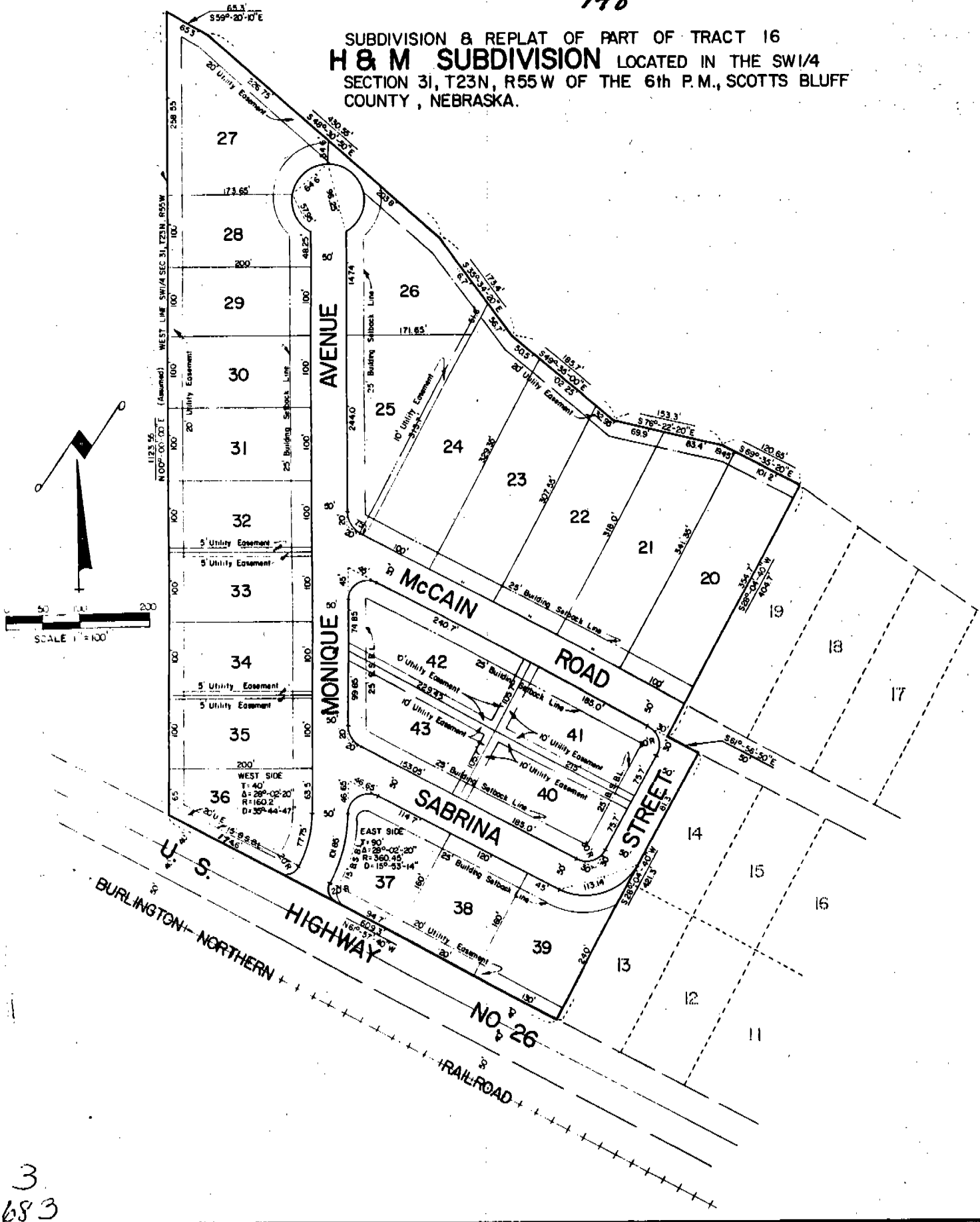


NOTE: See Replat of Lots 27 through 34,
Subd. & Replat of part of Tract 16, H & M
Subdivision, Deed 206-page 741

148

SUBDIVISION & REPLAT OF PART OF TRACT 16
H & M SUBDIVISION LOCATED IN THE SW1/4
SECTION 31, T23N, R55W OF THE 6th P.M., SCOTTS BLUFF
COUNTY, NEBRASKA.



3
683

681

148

SURVEYOR'S CERTIFICATE

I, Ronald L. Vogel, a competent surveyor of Scotts Bluff County, Nebraska, hereby certify that I have surveyed a part of Tract Sixteen (16), H & M Subdivision, situated in the Southwest Quarter (SW 1/4) of Section Thirty-one (31), Township Twenty-three (23) North, Range Fifty-five (55) West of the 6th P.M., Scotts Bluff County, Nebraska, such part of Tract 16 being more particularly described as follows:

Beginning at a point on the West Line of such Tract 16, such point being the West Line of the SW 1/4 of Section 31 and on the North Right-of-Way Line of U.S. Highway No. 26; then North 00°-00'-00" East on the West Line of such Tract 16, a distance of 1123.55 feet to the South Right-of-Way Line of the Enterprise Irrigation District Canal; then South 59°-20'-10" East, a distance of 65.3 feet along such Right-of-Way; then South 48°-30'-50" East, a distance of 430.55 feet; then South 35°-34'-20" East, a distance of 173.4 feet; then South 49°-35'-00" East, a distance of 185.7 feet; then South 76°-22'-20" East, a distance of 153.3 feet; then South 69°-35'-20" East, a distance of 120.65 feet to a point, such point being the Northwest corner of Lot Nineteen (19), Subdivision and Replat of part of Tract 16, H & M Subdivision, according to the recorded plat thereof; then South 28°-04'-40" West along the West Line of such Lot 19, a distance of 404.7 feet to a point on the South Line of McCain Road; then South 61°-56'-50" East, a distance of 50.0 feet to the Northwest corner of Lot Fourteen (14), Subdivision and Replat of part of Tract 16, H & M Subdivision, according to the recorded plat thereof; then South 28°-04'-40" West on the West Line of such Lot 14, extended a distance of 421.3 feet, to the Southwest corner of Lot Thirteen (13); then North 61°-57'-40" West on the Northerly Right-of-Way Line of U.S. Highway No. 26, a distance of 609.3 feet to the point of beginning, containing an area of 16.24 acres, more or less.

That I have further subdivided and replatted such real estate as above described as "Subdivision and Replat of Part of Tract 16, H & M Subdivision, Lots 20-42 inclusive". That all dimensions are in feet and decimals and that the boundary of the land subdivided is shown on the plat with a heavy solid line and that adjoining lands are shown dashed for orientation purposes. That each lot bears its own number and that the plat is drawn to a scale of 100 feet to the inch.

WITNESS MY HAND AND SEAL this 21st day of December, 1976.



Ronald L. Vogel
RONALD L. VOGEL
Nebraska Registered Land Surveyor
L.S. 266

684

148

685

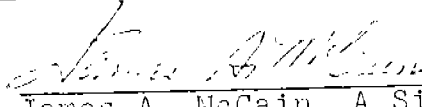
DEDICATION

We, the undersigned, being the owner of that part of Tract Sixteen (16), H & M Subdivision, as shown by the accompanying plat and described in the foregoing "Surveyor's Certificate" have caused such real estate to be subdivided and replatted as "Subdivision and Replat of part of Tract 16, H & M Subdivision".

The foregoing subdivision and replat and the streets, easements and drives as shown on and referred to in the plat are made with the free consent and in accordance with the desires of the undersigned owner.

We hereby dedicate the streets, drives and easements shown on and referred to in the plat to the use and benefit of the public.

Dated this 24th day of December, 1976.


James A. McCain, A Single Person

ACKNOWLEDGEMENT

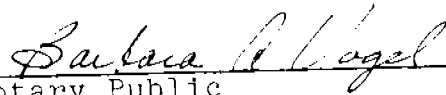
STATE OF NEBRASKA)
) ss.
SCOTTS BLUFF COUNTY)

before me, a Notary Public, qualified in such County, personally came James A. McCain, a Single Person, to me known to be the identical person whose name is affixed to the foregoing "Dedication" and acknowledge the execution thereof to be his voluntary act and deed.

WITNESS MY HAND AND NOTARIAL SEAL this 24th day of December, 1976.



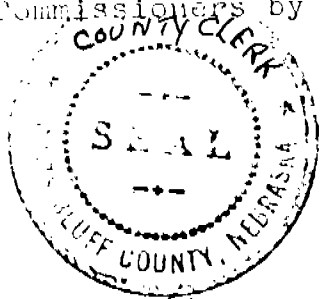
BARBARA A. VOGEL
General Notary-State of Nebr.
My Commission Expires
May 17, 1978


Notary Public

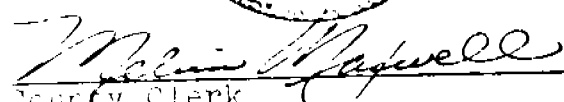
My Commission expires: _____

APPROVAL AND ACCEPTANCE

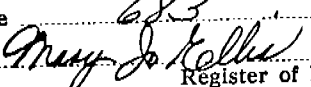
The foregoing "Subdivision and Replat of part of Tract 16, H & M Subdivision", approved by the Chairman and County Board of the Scotts Bluff County Commissioners by Resolution duly passed this 3rd day of January,



ATTEST:


County Clerk


Chairman of the Board

State of Nebraska, Scotts Bluff County ss.
Entered in Numerical Index and filed for
record the 6 day of January, 1977
at 3:45 o'clock P. M., and recorded in
Book 152 of Deeds
on page 683

Register of Deeds

By _____ Deputy