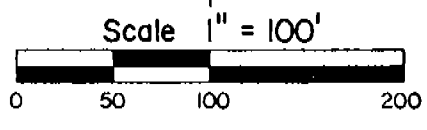
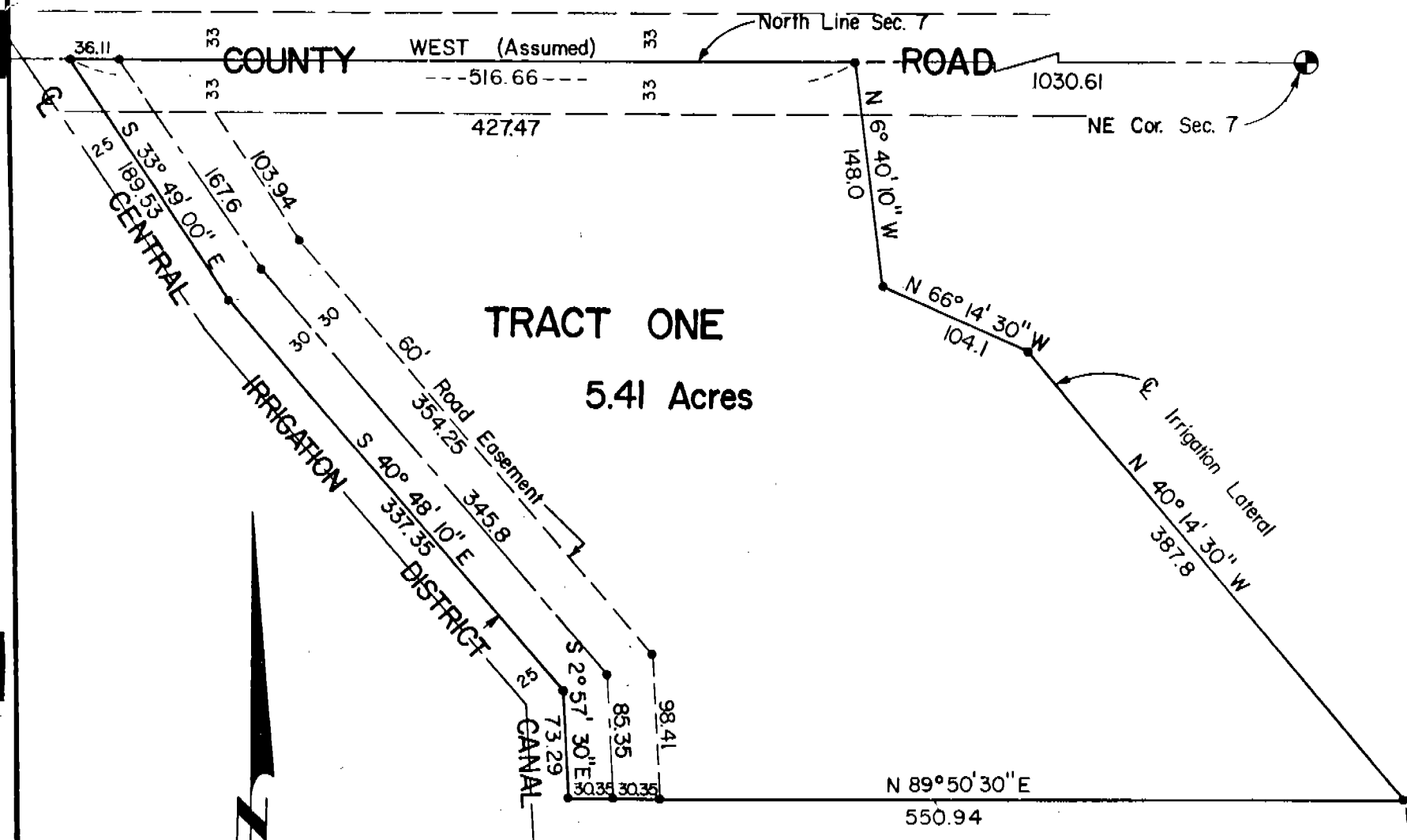


# FINAL PLAT 5376

OF TRACT ONE COOPER SUBDIVISION  
OF PART OF THE NE 1/4 SECTION 7,  
T 21 N, R 54 W OF THE 6th P. M.,  
SCOTTS BLUFF COUNTY, NEBRASKA.



• Indicates 3/4" Rebar Set

State of Nebraska, Scotts Bluff County ss.  
 Entered in Numerical Index and filed for  
 record the 1 day of November, 1976  
 at 1:05 o'clock P. M., and recorded in  
 Book 152 of Deeds  
 on page 123  
Mary J. Kellie  
 Register of Deeds  
 By \_\_\_\_\_ Deputy

✓ NUMERICAL INDEXED

③ 123

5376

SURVEYOR'S CERTIFICATE

I, Ronald L. Vogel, a competent surveyor of Scotts Bluff County, Nebraska, hereby certify that I have surveyed a tract of land situated in the North-east quarter (NE $\frac{1}{4}$ ) of Section Seven (7), Township Twenty-one (21) North, Range Fifty-four (54) West of the 6th P.M., Scotts Bluff County, Nebraska, such tract of land being more particularly described as follows:

With reference to the Northeast corner of such Section 7; then WEST on the North Line of such Section 7, a distance of 1030.61 feet to the point of beginning; then continuing WEST on the North Line of such Section 7, a distance of 516.66 feet to the East Right-of-Way Line of the Central Irrigation District Canal; then South 33 degrees-49 minutes-00 seconds East on such Right-of-Way Line, a distance of 189.53 feet; then South 40 degrees-48 minutes-10 seconds East on such Right-of-Way Line, a distance of 337.35 feet; then South 02 degrees-57 minutes-30 seconds East on such Right-of-Way Line, a distance of 73.29 feet; then North 89 degrees-50 minutes-30 seconds East, a distance of 550.94 feet; then North 40 degrees-14 minutes-30 seconds West, a distance of 387.8 feet; then North 66 degrees-14 minutes-30 seconds West, a distance of 104.1 feet; then North 06 degrees-40 minutes-10 seconds West, a distance of 148.0 feet to the point of beginning, containing an area of 2.41 acres, more or less.

That I have further surveyed and subdivided such land as above described as Cooper Subdivision, Tract One (1), including easements for streets therein. That the accompanying plat is a true delineation of such survey and subdivision, drawn to a scale of 100 feet to the inch. That all corners are marked with 3/4" x 36" iron rods and that all dimensions are in feet and decimals. That the boundary of the land subdivided is shown on the plat with a heavy solid line and that each tract bears its own number.

WITNESS MY HAND AND SEAL this 24th day of September, 1976.



*Ronald L. Vogel*

RONALD L. VOGEL  
Nebraska Registered Land Surveyor  
L.S. 266