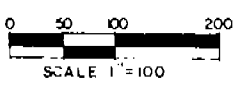
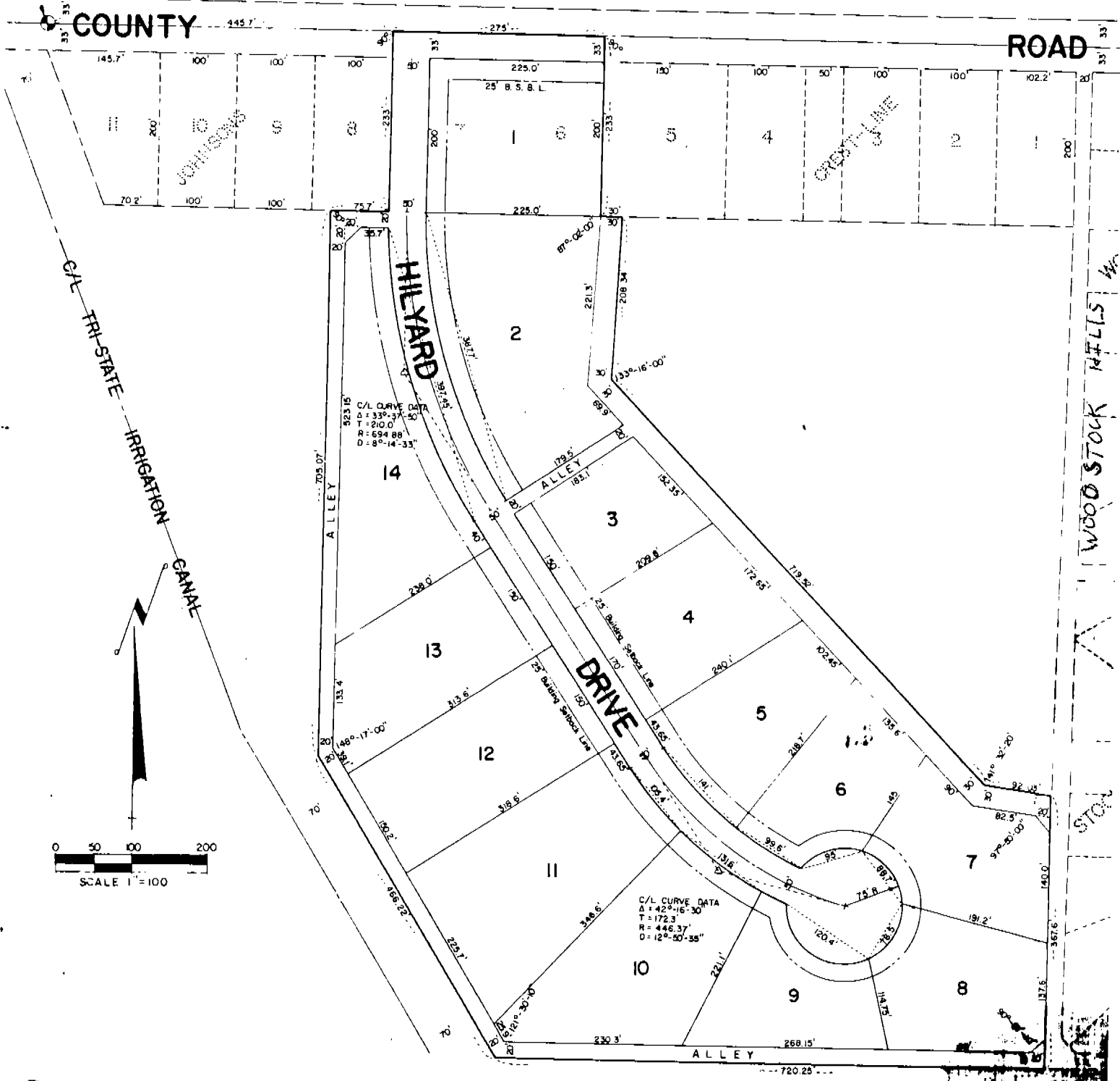


4671

HILYARD SUBDIVISION

A SUBDIVISION OF PART OF THE NORTHWEST QUARTER,
SECTION 26, T 23 N, R 56 W OF THE 6th P.M., SCOTTS BLUFF
COUNTY, NEBRASKA, AND LOTS 6 & 7 JOHNSONS CREST-LINE

Northwest Corner
Sec 26, T 23 N, R 56 W
12" Spike in Asphalt



595

I, Ronald L. Vogel, a competent surveyor of Scotts Bluff County, Nebraska, hereby certify that I have surveyed a part of the Northwest Quarter (NW $\frac{1}{4}$) of Section Twenty-six (26), Township Twenty-three (23) North, Range Fifty-six (56) West of the 6th P.M., Scotts Bluff County, Nebraska, being more particularly described as follows:

With reference to the Northwest corner of such NW $\frac{1}{4}$; then East on the North Line of such NW $\frac{1}{4}$, a distance of 445.7 feet to the point of beginning; then East on the North Line of such NW $\frac{1}{4}$, a distance of 275.0 feet; then a deflection angle to the right of 90 degrees-00 minutes-00 seconds, a distance of 233.0 feet; then a deflection angle to the right of 90 degrees-00 minutes-00 seconds, a distance of 30 feet; then a deflection angle to the right of 92 degrees-58 minutes-00 seconds, a distance of 208.34 feet; then a deflection angle to the left of 46 degrees-44 minutes-00 seconds, a distance of 719.52 feet; then a deflection angle to the left of 38 degrees-27 minutes-40 seconds, a distance of 92.03 feet to the West Line of Woodstock Hills; then a deflection angle to the right of 82 degrees-10 minutes-00 seconds, a distance of 367.6 feet to the South Line of the North Half of the NW $\frac{1}{4}$; then a deflection angle to the right of 89 degrees-52 minutes-50 seconds, on the South Line of such N $\frac{1}{2}$ NW $\frac{1}{4}$, a distance of 720.25 feet to the Easterly Right of Way Line of the Tri-State Canal; then a deflection angle to the right of 58 degrees-29 minutes-50 seconds, on such Right of Way Line, a distance of 466.22 feet; then a deflection angle to the right of 31 degrees-43 minutes-00 seconds, a distance of 705.07 feet to the South Line of Johnson Crest-Line; then a deflection angle to the right of 90 degrees-00 minutes-00 seconds, on the South Line of Johnson Crest-Line, a distance of 75.7 feet; then a deflection angle to the left of 90 degrees-00 minutes-00 seconds, a distance of 233.0 feet to the point of beginning, containing an area of 17.8 acres, more or less.

That I have further subdivided and platted such real estate as Bilyard Subdivision Lots One through Fourteen.

That all corners are marked with 3/4" x 18" iron rods and that all dimensions are in feet and decimals. That the boundary of the subdivision is shown on the plat with a heavy solid line and adjoining lot lines are shown dashed for orientation purposes. That each lot and block bears its own number and letter. That the accompanying plat is drawn to a scale of 100 feet to the inch.

WITNESS MY HAND AND SEAL this 1st day of July, 1975.



Ronald L. Vogel
 RONALD L. VOGEL
 NEBRASKA REGISTERED LAND SURVEYOR
 L.S. 266

DEDICATION AND ANNEXATION

4671

We, the undersigned, being the owners of that part of th NW $\frac{1}{4}$ of Section 26, Township 23North, Range 56 West of th 6th P.M., Scotts Bluff County, Nebraska; as described on the foregoing "surveyor's Certificate" have caused such real estate to be surveyed and platted as Hilyard Subdivision, Lots One through Fourteen, as shown by the accompanying plat.

The foregoing subdivision and the Streets, Alleys and Public Ways as appear on the plat is made with the free consent and in accordance with the desires of the undersigned owners.

We hereby dedicate the Streets, Alleys and Public Ways to the use and benefit of the public.

Dated this 1 day of July 1975.

Eva B Hilyard
Eva B. Hilyard

Vern B Hilyard
Vern B. Hilyard

Eloise Littlejohn
Eloise Littlejohn

Carol M Hilyard
Carol M. Hilyard

ACKNOWLEDGMENT

State of Nebraska)
Scotts Bluff County) ss

Before me, a notary public, qualified and acting in such County, personally came Eva B. Hilyard and Eloise Littlejohn, and Vern B. Hilyard and Carol M. Hilyard, husband and wife, to me known to be the identical persons who signed the foregoing "Dedication and Annexation" and acknowledged the execution thereof to be their voluntary act and deed.

Witness my hand and seal this 15th day of July 1975.

May 17, 1978
My commission Expires
BARBARA A. VOGEL
General Notary-State of Nebr.
My Commission Expires
May 17, 1978

Barbara A Vogel
Notary Public

APPROVAL AND ACCEPTANCE

The foregoing Hilyard Subdivision approved and accepted by the Mayor and City Council of the City of Mitchell, Nebraska by Resolution duly passed this 15th day of July 1975.

H. E. Mitchell
Mayor

Attest: Muriel Elmquist
City Clerk

NUMERICAL ✓
GENERAL ✓
PICTURED ✓

State of Nebraska, Scotts Bluff County ss.
Entered in Numerical Index and filed for
record the 21 day of September 1976
at 10:28 o'clock a.M., and recorded in
Book 151 of Deeds
on page 595
Mary J. Kallis
Register of Deeds
By Ed 95° Randy Reed Deputy

