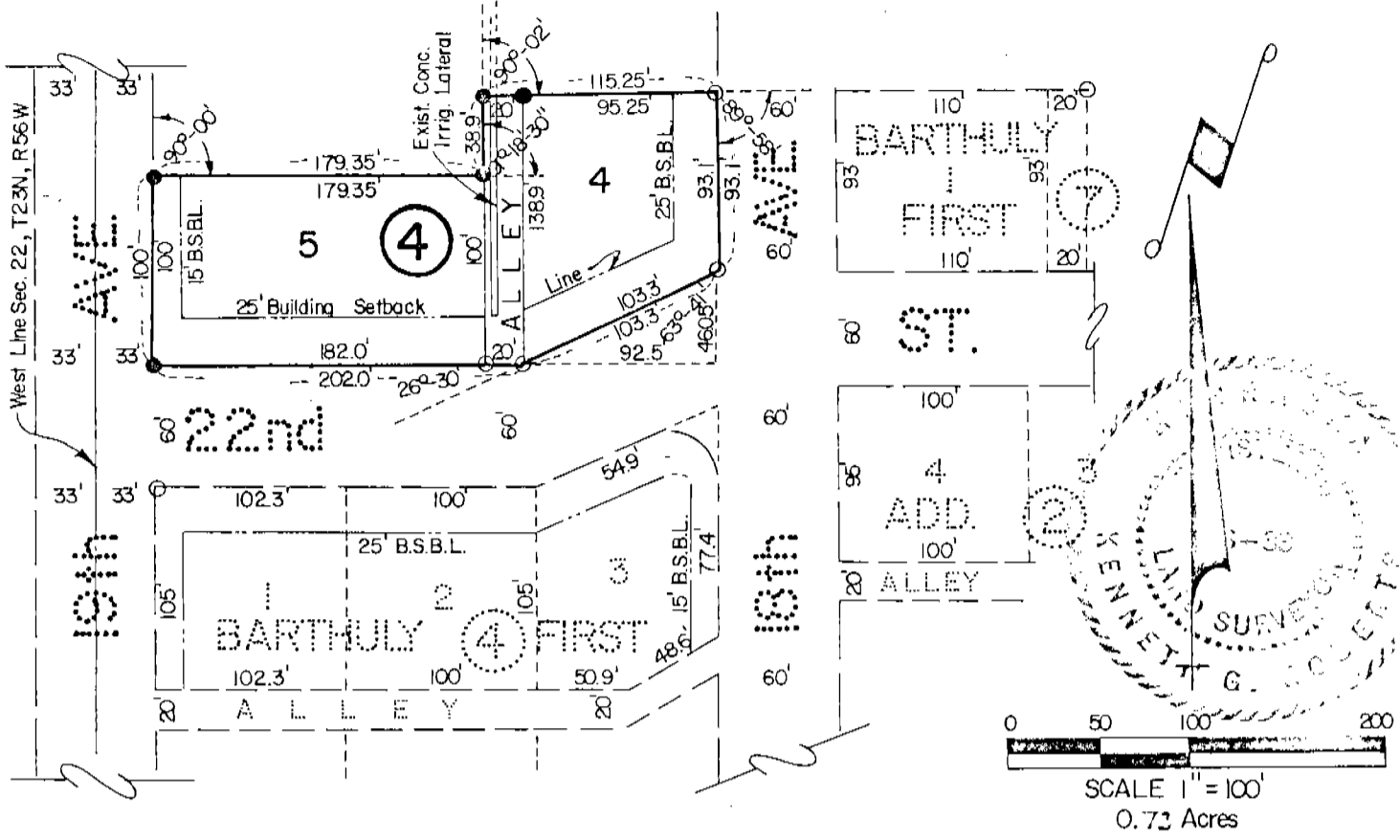


# BARTHULY FIRST ADDITION

3312

LOTS FOUR (4) AND FIVE (5), BLOCK FOUR (4),  
AN ADDITION TO THE CITY OF MITCHELL, NEBR.



SURVEYOR'S CERTIFICATE

- CORNERS FOUND
- CORNERS SET

I, Kenneth George Roberts, a competent surveyor of Scotts Bluff County, Nebraska, do hereby certify that I have surveyed a tract of land situated in the Southwest Quarter (36<sup>th</sup>) of Section Twenty-two (22), Township Twenty-three (23) North, Range Fifty-six (56) West of the Sixth Principal Meridian in Scotts Bluff County, Nebraska, more particularly described as follows: Beginning at a point 60 feet north of the northwest corner of Lot One (1), Block Four (4), BARTHULY FIRST ADDITION to the City of Mitchell, Scotts Bluff County, Nebraska, according to the recorded plat thereof. Such point being also on the north line of 22nd Street; thence in a northerly direction on an extension of the west line of such Lot One (1), a distance of 100 feet; thence angle right 90 degrees, a distance of 179.35 feet in an easterly direction; thence angle left 91 degrees, 18 minutes, 30 seconds, a distance of 54.9 feet, in a northerly direction; thence angle right 90 degrees 02 minutes, a distance of 115.25 feet in an easterly direction to the west line of 18th Ave as platted and dedicated; thence angle right 89 degrees 58 minutes, a distance of 93.1 feet in a southerly direction on such west line of 18th Avenue to the north line of aforementioned 22nd Street; thence angle right 63 degrees 41 minutes, a distance of 103.3 feet, in a southwesterly direction on such north line of 22nd Street; thence angle right 26 degrees 30 minutes, a distance of 202 feet on such north line of 22nd Street to the point of beginning, containing 0.73 acres more or less.

That the accompanying plat is a correct delineation of such survey drawn to a scale of 100 feet to one inch with all dimension shown thereon in feet and decimals.

That all corners are marked with 5/8" iron rods driven well into the ground.

That each lot and Block bears its own number. That the boundary of the subdivision is outlined with a heavy solid line and adjoining platted and unplatted lands are shown with dashed lines for orientation purposes only.

That I have prepared a plat of subdivision to be known as BARTHULY FIRST ADDITION Lots Four (4), and Five (5), Block Four (4), to the City of Mitchell, Nebraska.

WITNESS MY HAND AND SEAL  
this 5th day of June 1976.

*Kenneth George Roberts*  
Kenneth George Roberts, Scottsbluff, Nebraska  
Nebraska Registered Land Surveyor L. S. 33

3312

DEDICATION & ANNEXATION

We, the undersigned, being the owners of that part of the Southwest Quarter (SW<sup>1</sup>) of Section Twenty-two (22), more particularly described in the foregoing "Surveyor's Certificate and delineated on the accompanying plat, have caused such real estate to be surveyed, subdivided and platted as "BARTHULY FIRST ADDITION", Block Four (4), Lots Four (4), & Five (5), to the City of Mitchell, Nebraska. We hereby dedicate the alley shown on and referred to in the plat to the use and benefit of the public, subject to the continued use of the existing concrete irrigation lateral situated in the west five (5) feet of such alley, and terminating such use upon the construction of building improvements on Lot Four (4); and further annex and make such real estate a part of the City of Mitchell, Scotts Bluff County, Nebraska.

The foregoing subdivision of real estate, the dedication of the alley and the building setback designations as appear on the accompanying plat is made with the free consent and in accordance with the desires of the undersigned owners.

Dated this 2<sup>nd</sup> day of July 1976.

Henry Barthuly  
Henry Barthuly

Elizabeth F. Barthuly  
Elizabeth F. Barthuly

ACKNOWLEDGEMENT

STATE OF NEBRASKA

ss:

SCOTTS BLUFF COUNTY

On this 2<sup>nd</sup> day of July 1976

before me, a Notary Public, in and for said County, personally came Henry Barthuly and Elizabeth F. Barthuly, husband and wife, to me known to be the identical persons whose names are affixed to the foregoing "DEDICATION AND ANNEXATION" and acknowledged the execution thereof to be their voluntary act and deed.

WITNESSE MY HAND AND NOTARIAL SEAL the day and year last above written.

Kenneth G. Roberts  
NOTARY

My Commission Expires 27<sup>th</sup> Febr 1979



APPROVAL AND ACCEPTANCE

The foregoing plat of BARTHULY FIRST ADDITION, Block Four (4), Lots Four (4) and Five (5), approved & accepted by the Mayor and City Council of the City of Mitchell, Nebraska by resolution duly passed this 6<sup>th</sup> day of JULY 1976.

K. E. Mitchell  
MAYOR

Attest: Myrtle E. Longmaid  
City Clerk



State of Nebraska, Scotts Bluff County ss.  
Entered in Numerical Index and filed for  
record the 8 day of July, 1976  
at 12:20 o'clock P. M., and recorded in  
Book 151 of Recds  
on page 39  
Mary Jo Ellis  
Register of Deeds  
By Gene J. Clark Deputy