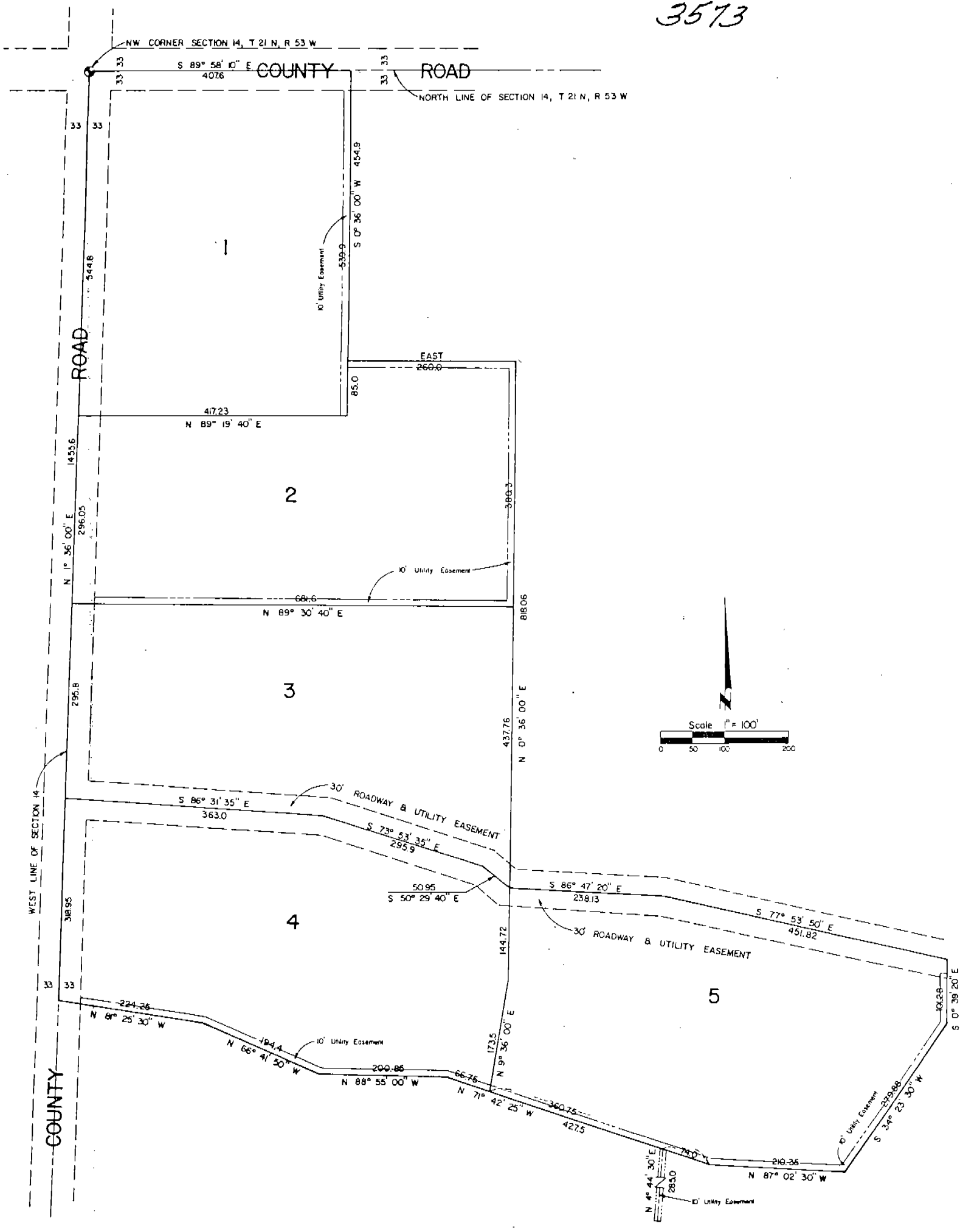


PETERSON SUBDIVISION  
 TRACTS 1-5  
 OF PART OF THE NW 1/4 SECTION 14, T 21 N, R 53 W  
 OF THE 6th P.M., SCOTTS BLUFF COUNTY, NEBRASKA.

3573



SURVEYOR'S CERTIFICATE

I, Ronald L. Vogel, a competent surveyor of Scotts Bluff County, Nebraska, hereby certify that I have surveyed a tract of land situated in part of the Northwest Quarter (NW $\frac{1}{4}$ ) of Section Fourteen (14), Township Twenty-one (21) North, Range Fifty-three (53) West of the 6th P.M., Scotts Bluff County, Nebraska, such tract being more particularly described as follows:

Beginning at the Northwest corner of such Section 14; then South 89 degrees-07 minutes-10 seconds East on the North Line of such Section 14, a distance of 407.6 feet; then South 0 degrees-36 minutes-00 seconds West, a distance of 454.9 feet; then EAST, a distance of 250.0 feet; then South 0 degrees-36 minutes-00 seconds West, a distance of 818.06 feet; then South 86 degrees-47 minutes-20 seconds East, a distance of 238.15 feet; then South 77 degrees-53 minutes-10 seconds East, a distance of 451.82 feet; then South 0 degrees-39 minutes-20 seconds East, a distance of 101.28 feet; then South 34 degrees-23 minutes-20 seconds West, a distance of 279.88 feet; then North 87 degrees-02 minutes-30 seconds West, a distance of 210.35 feet; then North 71 degrees-42 minutes-25 seconds West, a distance of 427.5 feet; then North 88 degrees-55 minutes-00 seconds West, a distance of 200.85 feet; then North 66 degrees-41 minutes-50 seconds West, a distance of 194.4 feet; then North 81 degrees-25 minutes-30 seconds West, a distance of 224.25 feet to the West Line of such NW $\frac{1}{4}$  of Section 14; then North 01 degree-36 minutes-00 seconds East, a distance of 1455.6 feet to the point of beginning, containing an area of 26.49 acres, more or less.

That I have further surveyed and subdivided such land as above described as "Peterson Subdivision", Tracts One (1) thru Five (5), inclusive. That the accompanying plat is a true delineation of such survey and subdivision, drawn to a scale of 100 feet to the inch. That all corners are marked with 3/4" x 18" iron rods and that all dimensions are in feet and decimals. That each tract bears its own number and that the boundary of the land subdivided is shown on the plat with a heavy solid line.

WITNESS MY HAND AND SEAL this 9th day of June, 1976.



*Ronald L. Vogel*  
RONALD L. VOGEL  
Nebraska Registered Land Surveyor  
L.S. 266  
Scotts Bluff County Surveyor

Peterson Subdivision  
T21N, Section 14, R53W  
Sheet 2 of 3

3573

DEDICATION

The undersigned, being the owners of that part of the Northwest Quarter (NW1/4) of Section Fourteen (14), Township Twenty-one (21) North, Range Fifty-three (53) West of the 6th P.M., Scotts Bluff County, Nebraska, as described in the foregoing "Surveyor's Certificate" and shown by the accompanying plat, have caused such real estate to be surveyed and subdivided as "Peterson Subdivision", Tracts One (1) thru Five (5).

We hereby dedicate the easements and roadways shown on and referred to in the plat to the use and benefit of the public. The above described and foregoing subdivision and the roadways and easements are made with the free consent and in accordance with the desires of the undersigned owners.

Dated this 9<sup>th</sup> day of June, 1976.

Hoyt I. Peterson  
Hoyt I. Peterson

Bulah M. Peterson  
Bulah M. Peterson

ACKNOWLEDGEMENT

STATE OF NEBRASKA        )  
                                  ) ss.  
SCOTTS BLUFF COUNTY    )

Before me, a Notary Public, qualified in such County, personally came Hoyt I. Peterson and Bulah M. Peterson, Husband and Wife, to me known to be the identical persons who signed the foregoing "Dedication" and acknowledge the execution thereof to be their voluntary act and deed.

WITNESS MY HAND AND NOTARIAL SEAL this 9<sup>th</sup> day of June, 1976.



BARBARA A. VOGEL  
General Notary-State of Nebr.  
My Commission Expires  
May 17, 1978

Barbara A. Vogel  
Notary Public

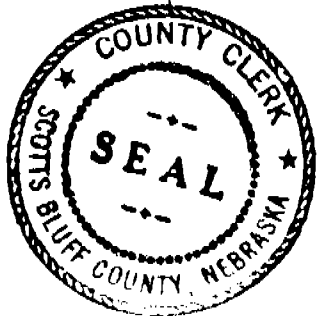
My commission expires: \_\_\_\_\_

APPROVAL AND ACCEPTANCE

The foregoing plat of "Peterson Subdivision", Tracts One (1) thru Five (5), a subdivision of part of the Northwest Quarter of Section 14, Township 21 North, Range 53 West of the 6th P.M., Scotts Bluff County, Nebraska, approved and accepted by the Chairman and Board of Commissioners of Scotts Bluff County, Nebraska, by resolution duly passed this 6 day of July, 1976.

Dud A. Letwood  
Chairman of the Board

ATTEST: J. Lee Maxwell  
County Clerk



State of Nebraska, Scotts Bluff County ss.  
Entered in Numerical Index and filed for  
record the 22 day of July, 1976  
at 3:25 o'clock P. M., and recorded in  
Book 151 of Deeds  
on page 135  
Mary Jo Keller  
Register of Deeds

By \_\_\_\_\_ Deputy