

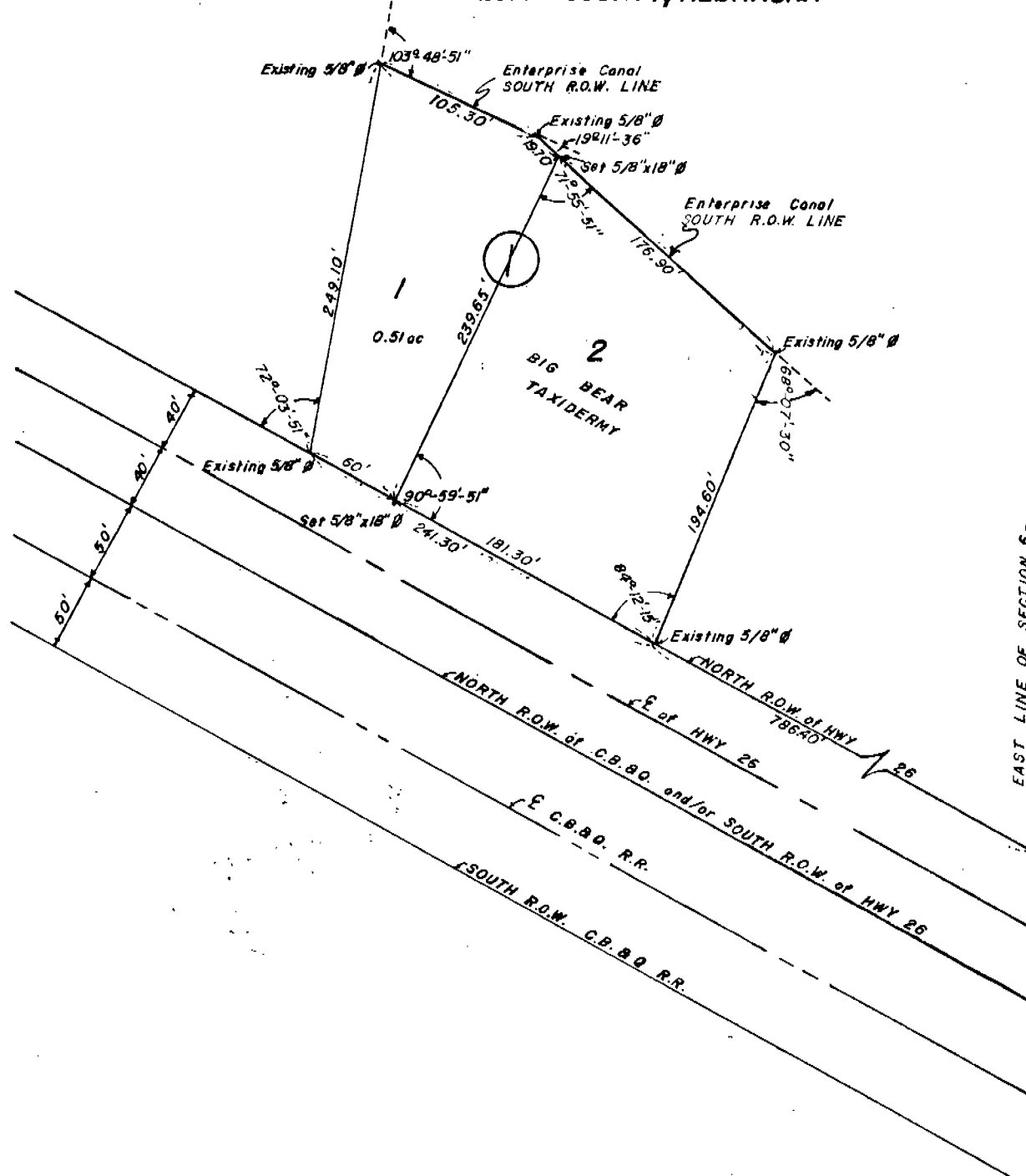
See Replat Lat 1 - Bk 188 pg 68

HUBEL SUB-DIVISION  
LOTS 1 & 2 - BLOCK 1  
A SUB-DIVISION OF  
SCOTTS BLUFF COUNTY, NEBRASKA

1910

3

141



SURVEYOR'S CERTIFICATE

I, M. C. Schaff, a competent surveyor of Scotts Bluff County, Nebraska, hereby certify that I have surveyed and subdivided a tract of land situated in Government Lot One (1) of Section Six (6), Township Twenty-two (22) North, Range Fifty-five (55) West of the Sixth (6th) Principle Meridian (P. M.), Scotts Bluff County, Nebraska, and that subdivision shall be known as Hubel Subdivision Lots 1 and 2, Block 1, and that the boundary of such subdivision be more particularly described as follows:

With reference to a point of intersection of the North Right-of-Way Line of the U. S. Highway No. 26, also known as Federal and State Aid Project 300-B, and the East Line of Section 6; thence, northwesterly on such North Right-of-Way, a distance of 786.4 feet to the point of beginning; thence northwesterly on the North Right-of-Way Line of said U. S. Highway No. 26, a distance of 241.3 feet; thence a deflection angle right of 72 degrees 03 minutes 51 seconds, a distance of 249.1 feet; thence a deflection angle right of 103 degrees 48 minutes 51 seconds, a distance of 105.3 feet on the South Right-of-Way Line of the Enterprise Canal; thence a deflection angle right of 19 degrees 11 minutes 36 seconds, continuing

1910

HUBEL SUBDIVISION  
LOTS 1 & 2, BLOCK 1  
A SUBDIVISION OF  
SCOTTS BLUFF COUNTY, NEBRASKA

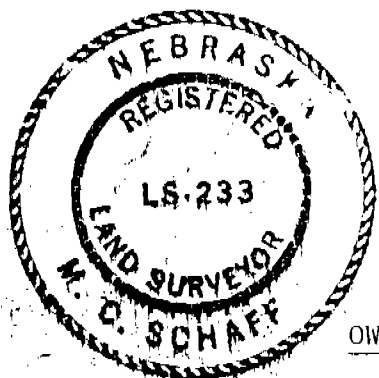
CONTINUATION SHEET 2 OF 3

on such South Right-of-Way Line of the Enterprise Canal, a distance of 196.6 feet, thence a deflection angle right of 68 degrees 07 minutes 30 seconds, a distance of 194.60 feet to the point of beginning, containing an area of 1.41 acres, more or less.

That the accompanying plat is a true delineation of such survey and subdivision drawn to a scale of 100 feet to the inch. That all corners are marked as shown and that all dimensions are in feet and decimals. That each Lot and Block bears its own number.

WITNESS MY HAND AND SEAL this 17<sup>th</sup> day of February, 1976

FOR THE FIRM OF M. C. SCHAFF & ASSOCIATES, INC.



*M. C. Schaff*

M. C. Schaff, Nebraska Registered  
Land Surveyor, L. S. 233

OWNER'S STATEMENT

We, the undersigned, being the Owners of that tract of land situated in Government Lot One (1) of Section Six (6), Township Twenty-Two (22) North, Range Fifty-five (55) West of the Sixth (6th) P. M., Scotts Bluff County, Nebraska, as described in the foregoing "Surveyor's Certificate" and shown by the accompanying plat, have caused such real estate to be surveyed and platted as Hubel Subdivision, Lots One (1) and Two (2), Block One (1).

The above-described and foregoing subdivision is made with free consent and in accordance with the desires of the undersigned Owners.

DATED THIS 17<sup>th</sup> day of February, 1976.

Carl Hubel  
Carl Hubel

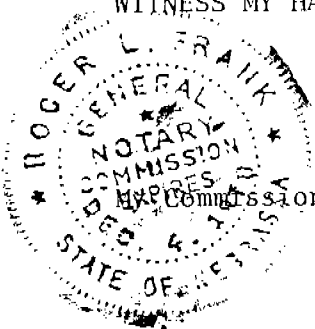
Maryhelen Hubel  
Maryhelen Hubel

ACKNOWLEDGEMENT

STATE OF NEBRASKA )  
SCOTTS BLUFF COUNTY )

Before me, a notary public, qualified and acting in Such County, personally came Carl Hubel and Maryhelen Hubel, husband and wife, to me known to be the identical persons who signed the foregoing Owner's Statement and acknowledged the execution thereof to be their voluntary act and deed.

WITNESS MY HAND AND NOTARIAL SEAL this 18 day of Feb, 1976.



Roger L. Frank  
Notary Public

Commission Expires: Dec 4 1978

1910

HUBEL SUBDIVISION  
LOTS 1 & 2, BLOCK 1  
A SUBDIVISION OF  
SCOTTS BLUFF COUNTY, NEBRASKA

CONTINUATION SHEET 3 OF 3

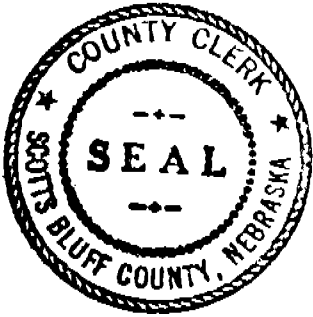
APPROVAL AND ACCEPTANCE

The foregoing Plat of Hubel Subdivision hereby approved by the Scotts Bluff  
County Board of Commissioners by Resolution duly passed this 19<sup>th</sup> day of  
April, 1976.

Signed: Erud A. Lockwood  
Chairman of the Board

ATTEST:

Melvin M. Howell  
County Clerk



NUMERICAL   
GENERAL   
FIGURED

State of Nebraska, Scotts Bluff County ss.  
Entered in Numerical Index and filed for  
record the 20 day of April, 1976  
at 9:30 o'clock A. M., and recorded in  
Book 150 of Block  
on page 141  
Mary J. Kellie  
Register of Deeds  
By \_\_\_\_\_ Deputy