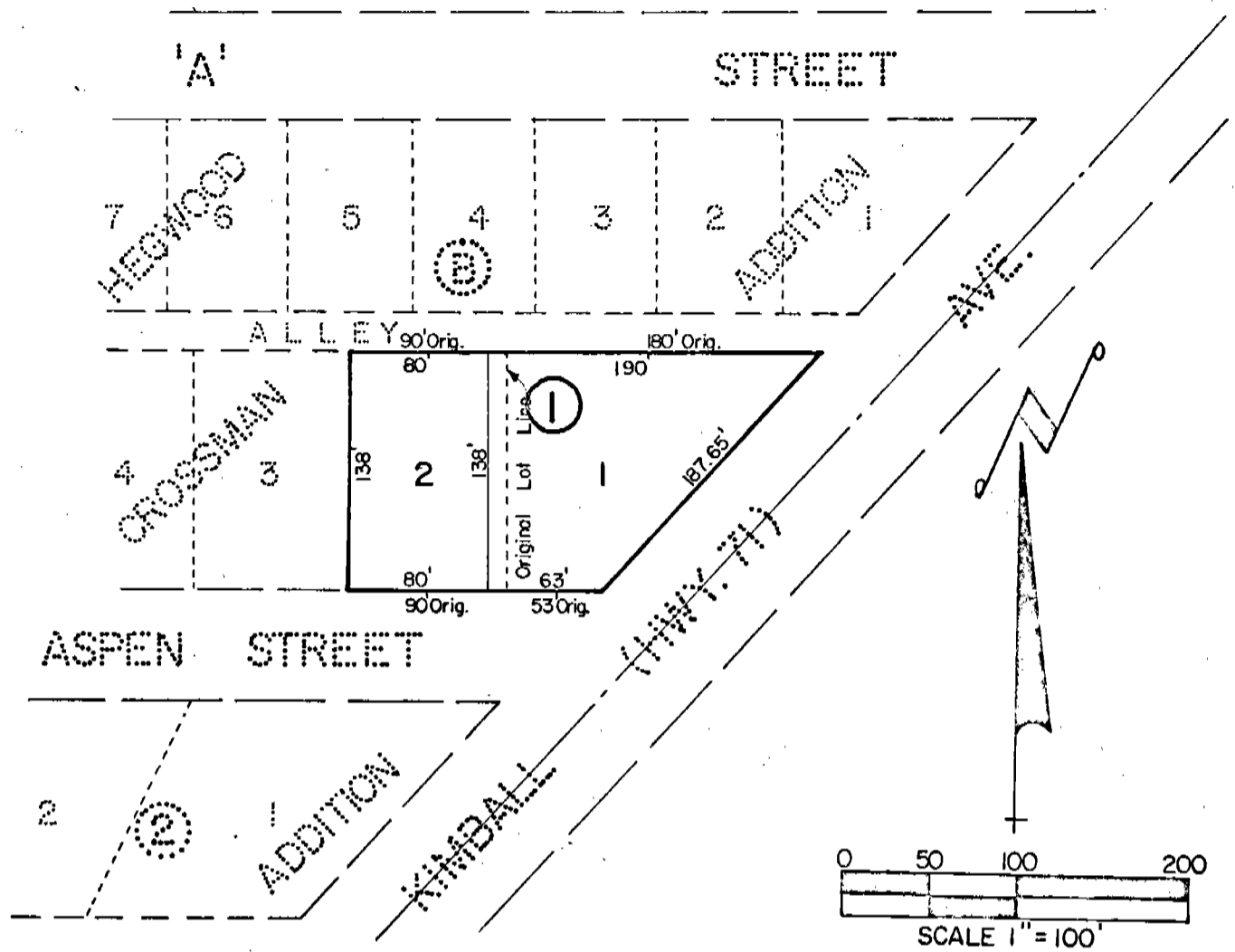


REPLAT 398

OF LOTS 1 & 2, BLOCK 1, CROSSMAN ADDITION TO THE CITY OF GERING, NEBRASKA.



SURVEYOR'S CERTIFICATE

I, Ronald L. Vogel, a competent surveyor of Scotts Bluff County, Nebraska, hereby certify that I have made a survey of Lots One (1) and Two (2), Block One (1), Crossman Addition to the City of Gering, Nebraska.

That I have further surveyed and replatted such Lots 1 and 2 as shown by the accompanying plat. That each new lot corner is marked with a 3/4" x 18" iron rod and all dimensions on the plat are in feet and decimals.

WITNESS MY HAND AND SEAL this 12th day of January, 1976.



Ronald L. Vogel
 RONALD L. VOGEL
 Nebraska Registered Land Surveyor
 L.S. 266

